

## Product datasheet

# Rabbit monoclonal [M111-2] Anti-Mouse IgG1, IgG2 $\alpha$ , IgG3 - BSA and Azide free ab239415

Recombinant RabMAb

1 Image

### Overview

---

<b>Product name</b>	Rabbit monoclonal [M111-2] Anti-Mouse IgG1, IgG2 $\alpha$ , IgG3 - BSA and Azide free
<b>Host species</b>	Rabbit
<b>Target species</b>	Mouse
<b>Tested applications</b>	<b>Suitable for:</b> ELISA
<b>Immunogen</b>	The details of the immunogen for this antibody are not available.

### Properties

---

<b>Form</b>	Liquid
<b>Storage instructions</b>	Shipped at 4°C. Store at +4°C. Do Not Freeze.
<b>Storage buffer</b>	pH: 7.2 Constituent: PBS
<b>Carrier free</b>	Yes
<b>Purity</b>	Protein A purified
<b>Clonality</b>	Monoclonal
<b>Clone number</b>	M111-2
<b>Isotype</b>	IgG
<b>General notes</b>	ab239415 is the carrier-free version of <a href="#">ab125904</a> . This format is designed for use in antibody labeling, including fluorochromes, metal isotopes, oligonucleotides, enzymes.

Our **carrier-free formats** are supplied in a buffer free of BSA, sodium azide and glycerol for higher conjugation efficiency.

Use our **conjugation kits** for antibody conjugates that are ready-to-use in as little as 20 minutes with <1 minute hands-on-time and 100% antibody recovery: available for fluorescent dyes, HRP, biotin and gold.

Ab239415 is compatible with the Maxpar® Antibody Labeling Kit from Fluidigm.

Maxpar® is a trademark of Fluidigm Canada Inc.

Human: We have preliminary internal testing data to indicate this antibody may not react with these species. Please contact us for more information.

This product is a recombinant monoclonal antibody, which offers several advantages including:

- High batch-to-batch consistency and reproducibility
- Improved sensitivity and specificity
- Long-term security of supply
- Animal-free production

For more information [see here](#).

Our RabMAb® technology is a patented hybridoma-based technology for making rabbit monoclonal antibodies. For details on our patents, please refer to [RabMAb® patents](#).

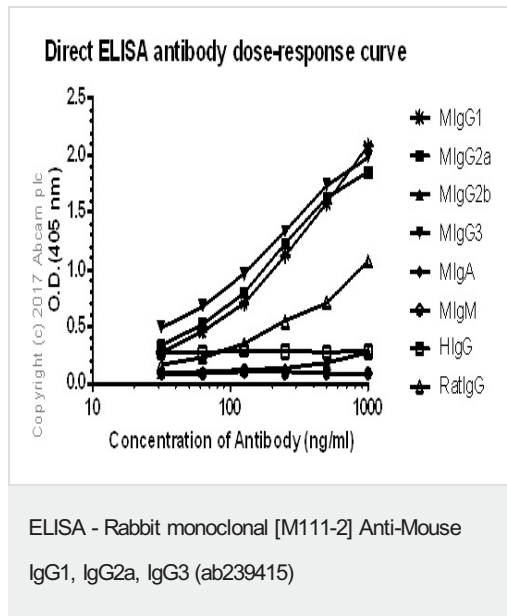
## Applications

**The Abpromise guarantee** Our **Abpromise guarantee** covers the use of ab239415 in the following tested applications.

The application notes include recommended starting dilutions; optimal dilutions/concentrations should be determined by the end user.

Application	Abreviews	Notes
ELISA		Use at an assay dependent concentration.

## Images



Direct ELISA antibody dose-response curve using **ab125904** between 0-1000 ng/ml. Antigen concentration of 1000 ng/mL. An alkaline phosphatase-conjugated goat anti-rabbit IgG (H+L) (1/2500) was used as the secondary antibody.

This data was developed using the same antibody clone in a different buffer formulation containing PBS, BSA and sodium azide (**ab125904**).

**Please note:** All products are "FOR RESEARCH USE ONLY. NOT FOR USE IN DIAGNOSTIC PROCEDURES"

## Our Abpromise to you: Quality guaranteed and expert technical support

- Replacement or refund for products not performing as stated on the datasheet

- Valid for 12 months from date of delivery
- Response to your inquiry within 24 hours
  
- We provide support in Chinese, English, French, German, Japanese and Spanish
- Extensive multi-media technical resources to help you
- We investigate all quality concerns to ensure our products perform to the highest standards

If the product does not perform as described on this datasheet, we will offer a refund or replacement. For full details of the Abpromise, please visit <https://www.abcam.com/abpromise> or contact our technical team.

### **Terms and conditions**

---

- Guarantee only valid for products bought direct from Abcam or one of our authorized distributors