

Product datasheet

Rabbit monoclonal [MlgG-R180-9-8] Anti-Mouse IgG1+IgG2 H&L ab125916

Recombinant

RabMAb

1 Image

Overview

Product name	Rabbit monoclonal [MlgG-R180-9-8] Anti-Mouse IgG1+IgG2 H&L
Host species	Rabbit
Target species	Mouse
Specificity	ab125916 is specific for Mouse IgG1 and Mouse IgG2a. The antibody does not recognise Mouse IgG2b, Mouse IgG3, Mouse IgA, Mouse IgM, Human IgG or Rat IgG.
Tested applications	Suitable for: ELISA
Immunogen	Other Immunogen Type corresponding to Mouse IgG1 + IgG2a.

Properties

Form	Liquid
Storage instructions	Shipped at 4°C. Store at +4°C short term (1-2 weeks). Upon delivery aliquot. Store at -20°C or -80°C. Avoid freeze / thaw cycle.
Storage buffer	pH: 7.20 Preservative: 0.09% Sodium azide Constituent: 99% PBS
Purity	Protein A purified
Clonality	Monoclonal
Clone number	MlgG-R180-9-8
Isotype	IgG
General notes	<p>ab125916 has weak cross-reactivity with mouse IgG1.</p> <p>Human, Rat: We have preliminary internal testing data to indicate this antibody may not react with these species. Please contact us for more information.</p> <p>This product is a recombinant monoclonal antibody, which offers several advantages including:</p> <ul style="list-style-type: none"> - High batch-to-batch consistency and reproducibility - Improved sensitivity and specificity - Long-term security of supply

- Animal-free production

For more information [see here](#).

Our RabMAb[®] technology is a patented hybridoma-based technology for making rabbit monoclonal antibodies. For details on our patents, please refer to [RabMAb[®] patents](#).

Applications

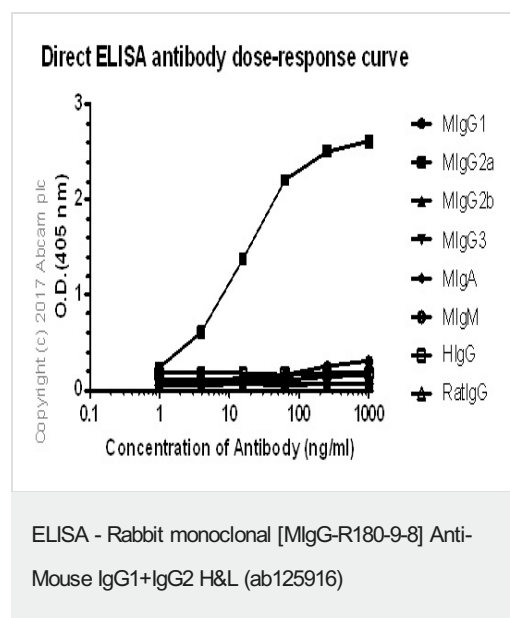
The Abpromise guarantee

Our [Abpromise guarantee](#) covers the use of ab125916 in the following tested applications.

The application notes include recommended starting dilutions; optimal dilutions/concentrations should be determined by the end user.

Application	Abreviews	Notes
ELISA		1/1000.

Images



Direct ELISA antibody dose-response curve using ab125916 between 0-1000 ng/ml. Antigen concentration of 1000 ng/mL. An alkaline phosphatase-conjugated goat anti-rabbit IgG (H+L) (1/2500) was used as the secondary antibody.

Please note: All products are "FOR RESEARCH USE ONLY. NOT FOR USE IN DIAGNOSTIC PROCEDURES"

Our Abpromise to you: Quality guaranteed and expert technical support

- Replacement or refund for products not performing as stated on the datasheet
- Valid for 12 months from date of delivery
- Response to your inquiry within 24 hours
- We provide support in Chinese, English, French, German, Japanese and Spanish
- Extensive multi-media technical resources to help you
- We investigate all quality concerns to ensure our products perform to the highest standards

If the product does not perform as described on this datasheet, we will offer a refund or replacement. For full details of the Abpromise,

please visit <https://www.abcam.com/abpromise> or contact our technical team.

Terms and conditions

- Guarantee only valid for products bought direct from Abcam or one of our authorized distributors