

Product datasheet

Rabbit monoclonal [RM106] Anti-Mouse IgG1 Fc (Biotin) ab238623

[3 Images](#)

Overview

Product name	Rabbit monoclonal [RM106] Anti-Mouse IgG1 Fc (Biotin)
Host species	Rabbit
Target species	Mouse
Specificity	ab238623 reacts to the Fc region of mouse IgG1. No cross reactivity with mouse IgG2a, IgG3, IgM, IgA, IgE, human IgG, or rat IgG. The Fc region of ab238623 has been engineered to eliminate Fc receptor binding.
Tested applications	Suitable for: WB, ELISA
Immunogen	Full length protein corresponding to Mouse IgG1. (Mouse IgG).
Conjugation	Biotin

Properties

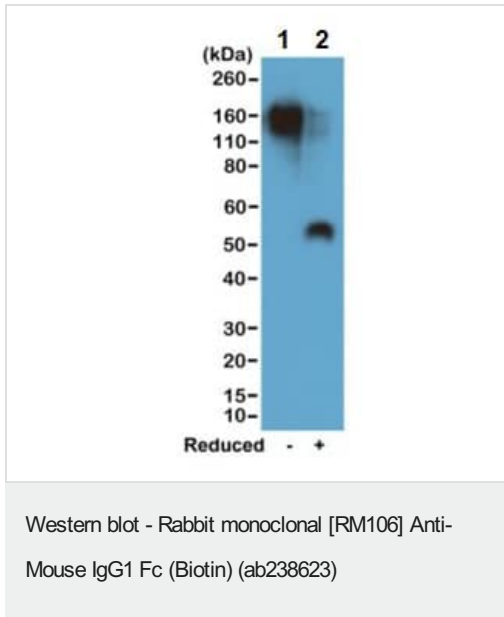
Form	Liquid
Storage instructions	Shipped at 4°C. Store at +4°C short term (1-2 weeks). Upon delivery aliquot. Store at -20°C long term. Avoid freeze / thaw cycle. Store In the Dark.
Storage buffer	Preservative: 0.09% Sodium azide Constituents: 50% Glycerol (glycerin, glycerine), PBS, 1% BSA
Purity	Protein A purified
Purification notes	Purified from an animal origin-free culture supernatant.
Clonality	Monoclonal
Clone number	RM106
Isotype	IgG

Applications

The Abpromise guarantee Our **Abpromise guarantee** covers the use of ab238623 in the following tested applications. The application notes include recommended starting dilutions; optimal dilutions/concentrations should be determined by the end user.

Application	Abreviews	Notes
WB		Use a concentration of 0.1 - 5 µg/ml. Predicted molecular weight: 36 kDa.
ELISA		Use a concentration of 0.005 - 2 µg/ml.

Images



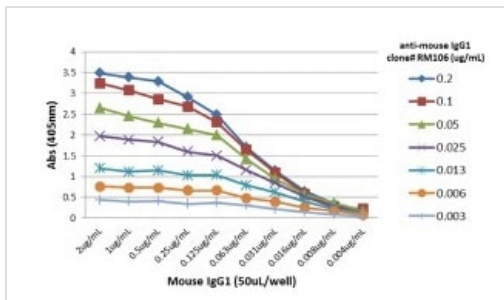
All lanes : Rabbit monoclonal [RM106] Anti-Mouse IgG1 Fc (Biotin) (ab238623) at 0.2 µg/ml

Lane 1 : Non-reduced (-) mouse IgG1, 20 ng/lane

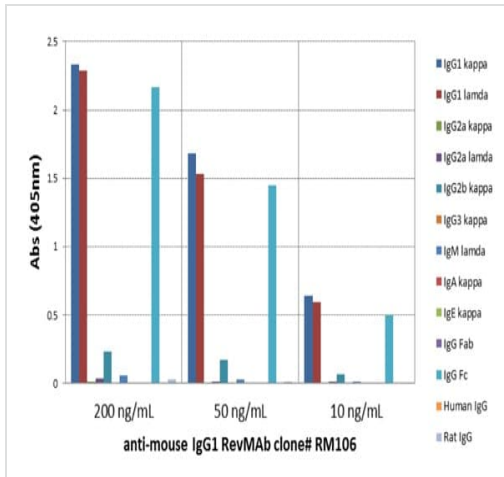
Lane 2 : Reduced (+) mouse IgG1, 20 ng/lane

Predicted band size: 36 kDa

This antibody reacts to non-reduced IgG1 (~150 kDa) stronger than the reduced γ 1 form (~50 kDa).



A titer ELISA of mouse IgG1. The plate was coated with different amount of mouse IgG1. A serial dilution of ab238623 was used as the primary antibody. An alkaline phosphatase conjugated anti-rabbit IgG as the secondary antibody.



ELISA - Rabbit monoclonal [RM106] Anti-Mouse IgG1 Fc (Biotin) (ab238623)

ELISA of mouse immunoglobulins shows ab238623 reacts to the Fc region of mouse IgG1; no cross reactivity with IgG2a, IgG3, IgM, IgA, IgE, human IgG, or rat IgG. The plate was coated with 50 ng/well of different immunoglobulins. 200 ng/mL, 50 ng/mL, or 10 ng/mL of ab238623 was used as the primary antibody. An alkaline phosphatase conjugated anti-rabbit IgG as the secondary antibody.

Please note: All products are "FOR RESEARCH USE ONLY. NOT FOR USE IN DIAGNOSTIC PROCEDURES"

Our Abpromise to you: Quality guaranteed and expert technical support

- Replacement or refund for products not performing as stated on the datasheet
- Valid for 12 months from date of delivery
- Response to your inquiry within 24 hours
- We provide support in Chinese, English, French, German, Japanese and Spanish
- Extensive multi-media technical resources to help you
- We investigate all quality concerns to ensure our products perform to the highest standards

If the product does not perform as described on this datasheet, we will offer a refund or replacement. For full details of the Abpromise, please visit <https://www.abcam.com/abpromise> or contact our technical team.

Terms and conditions

- Guarantee only valid for products bought direct from Abcam or one of our authorized distributors