

Product datasheet

Rabbit Anti-Mouse IgG H&L (Alkaline Phosphatase) ab97043

[3 References](#) [1 Image](#)

Overview

Product name	Rabbit Anti-Mouse IgG H&L (Alkaline Phosphatase)
Host species	Rabbit
Target species	Mouse
Specificity	By immunoelectrophoresis and ELISA this antibody reacts specifically with mouse IgG and with light chains common to other mouse immunoglobulins. No antibody was detected against non-immunoglobulin serum proteins.
Tested applications	Suitable for: ICC, ELISA, IHC-P, WB
Conjugation	Alkaline Phosphatase

Properties

Form	Liquid
Storage instructions	Shipped at 4°C. Store at +4°C.
Storage buffer	pH: 6.8 Preservative: 0.09% Sodium azide Constituents: 0.2% BSA, 0.58% Sodium chloride, 0.0095% Magnesium chloride, 0.00136% Zinc chloride, 1.19% HEPES
Purity	Immunogen affinity purified
Purification notes	This antibody was isolated by affinity chromatography using antigen coupled to agarose beads and conjugated to Alkaline Phosphatase (AP).
Conjugation notes	Molar enzyme: antibody protein ratio is 1:1
Clonality	Polyclonal
Isotype	IgG
General notes	Part of the AbExcel range.

Applications

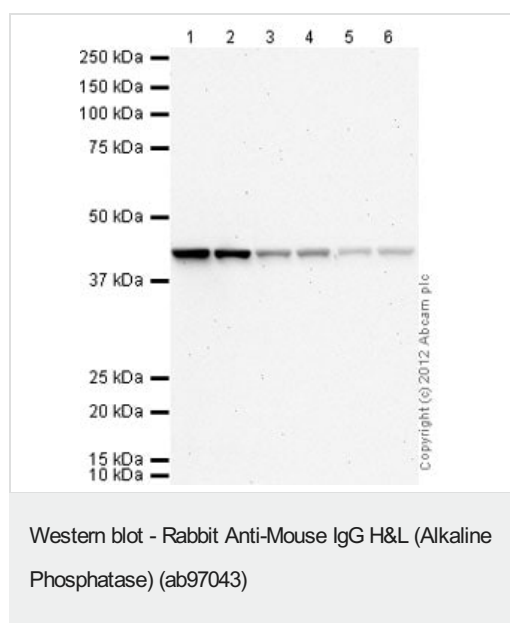
The Abpromise guarantee

Our **Abpromise guarantee** covers the use of ab97043 in the following tested applications.

The application notes include recommended starting dilutions; optimal dilutions/concentrations should be determined by the end user.

Application	Abreviews	Notes
ICC		Use at an assay dependent dilution.
ELISA		1/5000 - 1/50000. (Primary).
IHC-P		1/100 - 1/1000.
WB		1/5000 - 1/50000. (Chemiluminescent).

Images



All lanes : Anti-beta Actin antibody [mAbcam 8226] - Loading Control ([ab8226](#)) at 1 µg/ml

All lanes : HeLa (Human epithelial carcinoma cell line) Whole Cell Lysate

Lysates/proteins at 10 µg per lane.

Secondary

Lanes 1-2 : Rabbit Anti-Mouse IgG H&L (Alkaline Phosphatase) (ab97043) at 1/5000 dilution

Lanes 3-4 : Rabbit Anti-Mouse IgG H&L (Alkaline Phosphatase) (ab97043) at 1/20000 dilution

Lanes 5-6 : Rabbit Anti-Mouse IgG H&L (Alkaline Phosphatase) (ab97043) at 1/50000 dilution

Developed using the ECL technique.

Performed under reducing conditions.

Exposure time: 20 minutes

Please note: All products are "FOR RESEARCH USE ONLY. NOT FOR USE IN DIAGNOSTIC PROCEDURES"

Our Abpromise to you: Quality guaranteed and expert technical support

- Replacement or refund for products not performing as stated on the datasheet
- Valid for 12 months from date of delivery
- Response to your inquiry within 24 hours
- We provide support in Chinese, English, French, German, Japanese and Spanish

- Extensive multi-media technical resources to help you
- We investigate all quality concerns to ensure our products perform to the highest standards

If the product does not perform as described on this datasheet, we will offer a refund or replacement. For full details of the Abpromise, please visit <https://www.abcam.com/abpromise> or contact our technical team.

Terms and conditions

- Guarantee only valid for products bought direct from Abcam or one of our authorized distributors