

Rabbit Anti-Rat IgG H&L (Biotin) ab6733

[27 References](#) [2 Images](#)

Overview

Product name	Rabbit Anti-Rat IgG H&L (Biotin)
Host species	Rabbit
Target species	Rat
Tested applications	Suitable for: WB, ELISA, Immunomicroscopy, Dot blot, ICC/IF, IHC-P, IHC-Fr
Immunogen	Rat IgG whole molecule
Conjugation	Biotin

Properties

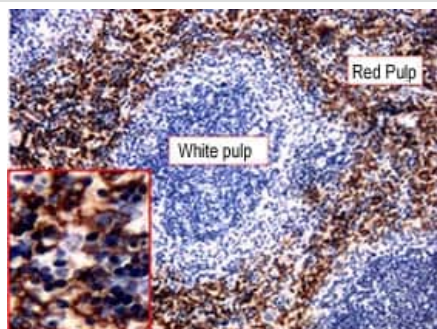
Form	Liquid
Storage instructions	Shipped at 4°C. Store at +4°C short term (1-2 weeks). Upon delivery aliquot. Store at -20°C or -80°C. Avoid freeze / thaw cycle.
Storage buffer	pH: 6.50 Preservative: 0.01% Sodium azide Constituents: 0.42% Tripotassium orthophosphate, 0.87% Sodium chloride, 1% BSA
Purity	Affinity purified
Purification notes	This product was prepared from monospecific antiserum by immunoaffinity chromatography using Rat IgG coupled to agarose beads followed by solid phase adsorption(s) to remove any unwanted reactivities.
Conjugation notes	Biotinamidocaproate N-Hydroxysuccinimide Ester (BAC) Biotin/Protein Ratio: 10-20 BAC molecules per Rabbit IgG molecule
Clonality	Polyclonal
Isotype	IgG

Applications

The Abpromise guarantee Our **Abpromise guarantee** covers the use of ab6733 in the following tested applications. The application notes include recommended starting dilutions; optimal dilutions/concentrations should be determined by the end user.

Application	Abreviews	Notes
WB		Use at an assay dependent dilution.
ELISA		1/500000.
Immunomicroscopy		Use at an assay dependent concentration.
Dot blot		Use at an assay dependent concentration.
ICC/IF		1/1000 - 1/5000.
IHC-P		Use at an assay dependent concentration.
IHC-Fr		Use at an assay dependent concentration.

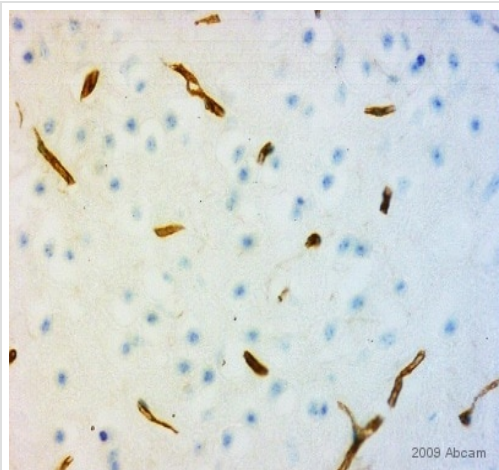
Images



Ab6640 (Rat monoclonal [Cl:A3-1] to F4/80) at a 1/8000 dilution staining mouse spleen tissue by IHC-P. Ab6733 was used as the secondary antibody at a dilution of 1/400.

Immunohistochemistry (Formalin/PFA-fixed paraffin-embedded sections) - Rabbit Anti-Rat IgG H&L (Biotin) (ab6733)

This image is courtesy of an Abreview submitted by Dr Jiqiang Zhang



Immunohistochemistry (Frozen sections) - Rabbit
Anti-Rat IgG H&L (Biotin) (ab6733)

Ab6733 was used at dilution 1/100 with the primary antibody **ab25375** in IHC-Fr. See the review on **ab25375**.

Please note: All products are "FOR RESEARCH USE ONLY. NOT FOR USE IN DIAGNOSTIC PROCEDURES"

Our Abpromise to you: Quality guaranteed and expert technical support

- Replacement or refund for products not performing as stated on the datasheet
- Valid for 12 months from date of delivery
- Response to your inquiry within 24 hours
- We provide support in Chinese, English, French, German, Japanese and Spanish
- Extensive multi-media technical resources to help you
- We investigate all quality concerns to ensure our products perform to the highest standards

If the product does not perform as described on this datasheet, we will offer a refund or replacement. For full details of the Abpromise, please visit <https://www.abcam.com/abpromise> or contact our technical team.

Terms and conditions

- Guarantee only valid for products bought direct from Abcam or one of our authorized distributors