

Product datasheet

Prestained Protein Ladder - Mid-range molecular weight (10 - 180 kDa) ab116027

★★★★★ [2 Abreviews](#) [5 References](#) [2 Images](#)

Overview

Product name	Prestained Protein Ladder - Mid-range molecular weight (10 - 180 kDa)
Tested applications	Suitable for: WB, SDS-PAGE
General notes	<p>Prestained Protein Ladder ab116027 is a three-color protein standard with 10 pre-stained proteins covering a wide range molecular weights for 10 to 180 kDa. Proteins are covalently coupled with a blue chromophore except for two reference bands (one green and one red band at 25 kDa and 75 kDa respectively) when separated on SDS-PAGE (Tris-glycine buffer).</p> <p>This product was previously called Prism Ultra Protein Ladder (10 - 180 kDa).</p> <p>This prestained protein ladder is designed for monitoring protein separated during SDS-polyacrylamide gel electrophoresis, verification of Western transfer efficiency on membranes (PVDF, nylon, or nitrocellulose) and for approximate sizing of proteins. The ladder is supplied in gel loading buffer and is ready to use.</p> <p>Do not heat, dilute, add reducing agent before loading.</p> <p>Key product features:</p> <p>Broad range: 10-180 kDa</p> <p>Ready-to-use: Supplied in a loading buffer for direct loading on gels.</p> <p>Easy to identify: Includes green ~25 kDa and red ~75kDa reference bands.</p> <p>Sharp bands</p> <p>Recommended loading: ~2 - 3 µl for western blots</p> <p>Review other protein ladders in the unstained and prestained protein ladder guide.</p>

Properties

Form	Liquid
Storage instructions	Shipped at 4°C. Store at +4°C short term (1-2 weeks). Store at -20°C long term.
Storage buffer	pH: 7.50 Constituents: 0.02% Urea, 2% Sodium lauryl sulfate, 3% (R*,R*)-1,4-Dimercaptobutan-2,3-diol, 15% Glycerol (glycerin, glycerine), 1% Tris phosphate

Applications

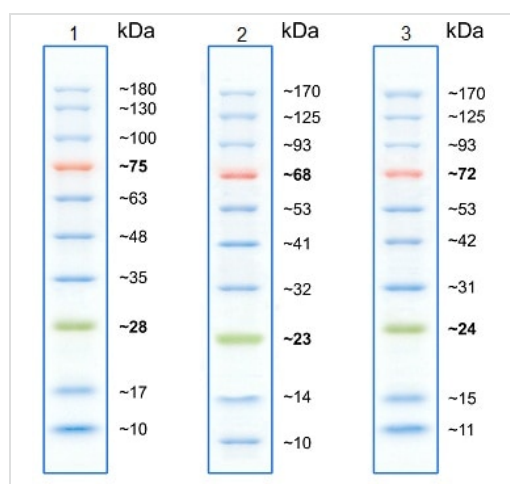
The Abpromise guarantee

Our **Abpromise guarantee** covers the use of ab116027 in the following tested applications.

The application notes include recommended starting dilutions; optimal dilutions/concentrations should be determined by the end user.

Application	Abreviews	Notes
WB		Use at an assay dependent concentration. ~2 - 3 μ l per well for general Western transferring. Apply more for thicker (>1.5 mm) or larger gel.
SDS-PAGE		Use at an assay dependent concentration. 3 μ l or 5 μ l per loading for clear visualization during electrophoresis on 15-well or 10-well mini-gel, respectively.

Images



SDS-PAGE - Prestained Protein Ladder - Mid-range molecular weight (10 - 180 kDa) (ab116027)

Gel 1: Tris-Glycine (~4-20%) Gel 2: Bis-Tris (12%) MOPS buffer
Gel 3: Bis-Tris (10%) MES buffer Pre-stained molecular weight standards have a differing mobility and as a consequence varying apparent molecular weight when run in distinct SDS-PAGE buffer systems. The variance in pH of alternative buffers affects the charge of the labelled protein standard and its binding capacity for SDS. The apparent molecular weight of this marker has been determined by calibration against an unstained ladder in each electrophoresis condition.



Western blot - Prestained Protein Ladder - Mid-range molecular weight (10 - 180 kDa) (ab116027)

This image is courtesy of an anonymous Abreview.

Very easy to use protein ladder in the range from 10-180 kDa. Good separation in SDS-PAGE and nice transfer onto nitrocellulose membrane. The gel used was a 10% Tris-Bis gel from life-technologies. the protein ladder was used at 2.5 μ l per well.

Please note: All products are "FOR RESEARCH USE ONLY. NOT FOR USE IN DIAGNOSTIC PROCEDURES"

Our Abpromise to you: Quality guaranteed and expert technical support

- Replacement or refund for products not performing as stated on the datasheet
- Valid for 12 months from date of delivery
- Response to your inquiry within 24 hours

- We provide support in Chinese, English, French, German, Japanese and Spanish
- Extensive multi-media technical resources to help you
- We investigate all quality concerns to ensure our products perform to the highest standards

If the product does not perform as described on this datasheet, we will offer a refund or replacement. For full details of the Abpromise, please visit <https://www.abcam.com/abpromise> or contact our technical team.

Terms and conditions

- Guarantee only valid for products bought direct from Abcam or one of our authorized distributors