

## Product datasheet

# Western Blot Marker Pen ab166858

★★★★★ [1 Abreviews](#) [2 Images](#)

### Overview

<b>Product name</b>	Western Blot Marker Pen
<b>Tested applications</b>	<b>Suitable for:</b> WB
<b>General notes</b>	<p>Western Blot Marker Pen ab166858 is used to annotate the blot and/or to mark the positions of (pre-stained) molecular weight standard markers on a PVDF or nitrocellulose membrane during western blotting. The pen is used after the transfer of proteins from the gel to the membrane. The marks made with the pen can be visualized by chemiluminescence after development of the blot, as well as directly in normal light when using colorimetric development or when marking the membrane.</p> <p>Without the pen, it is often necessary to align the western blot result with the molecular weight markers on the original membrane blot to estimate the molecular weight of the proteins of interest. Using the marks made by the pen reduces the errors made during the alignment process.</p> <p>This product was previously called Optiblot Luminol Membrane Pen.</p>

### Properties

<b>Form</b>	No information available
<b>Storage instructions</b>	Store at +4°C. Do not freeze.
<b>Storage buffer</b>	Constituents: 10% Glycerol (glycerin, glycerine), 1% Coomassie Brilliant Blue

### Applications

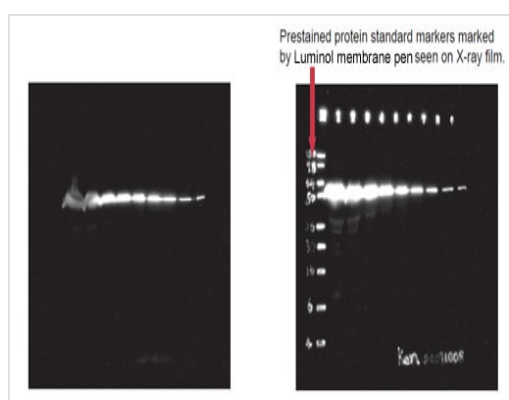
**The Abpromise guarantee** Our **Abpromise guarantee** covers the use of ab166858 in the following tested applications. The application notes include recommended starting dilutions; optimal dilutions/concentrations should be determined by the end user.

Application	Abreviews	Notes
WB		Use at an assay dependent concentration.

### Images



Western blot - Western Blot Marker Pen (ab166858)



Western blot - Western Blot Marker Pen (ab166858)

During the colorimetric or chemiluminescent development step, the bands of molecular weight standard marker can be visualized and recorded for further analysis.

Susceptible protein bands are easily located from the WB result. (red arrow indicated). Additionally, in WB application, the Optiblot Luminol Membrane Pen can be used as personal noting or marking as positive control.

**Please note:** All products are "FOR RESEARCH USE ONLY. NOT FOR USE IN DIAGNOSTIC PROCEDURES"

### Our Abpromise to you: Quality guaranteed and expert technical support

---

- Replacement or refund for products not performing as stated on the datasheet
- Valid for 12 months from date of delivery
- Response to your inquiry within 24 hours
  
- We provide support in Chinese, English, French, German, Japanese and Spanish
- Extensive multi-media technical resources to help you
- We investigate all quality concerns to ensure our products perform to the highest standards

If the product does not perform as described on this datasheet, we will offer a refund or replacement. For full details of the Abpromise, please visit <https://www.abcam.com/abpromise> or contact our technical team.

### Terms and conditions

---

- Guarantee only valid for products bought direct from Abcam or one of our authorized distributors