

Product datasheet

HeLa nuclear extract lysate ab150036

[1 References](#) [5 Images](#)

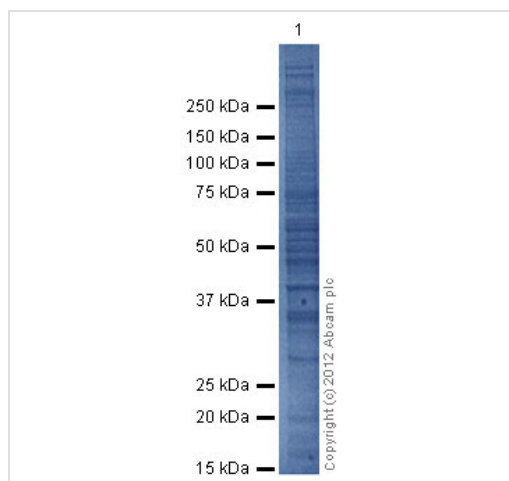
Overview

Product name	HeLa nuclear extract lysate
General notes	<p>We recommend aliquoting the extracts into single use fractions and then storing them at -80°C.</p> <p>This HeLa Nuclear Extract was prepared using a standard nuclear lysate protocol. The concentration was determined using the BCA assay process and then diluted using Dithiothreitol (DTT) and a non-reducing lithium dodecyl sulfate sample loading buffer (LDS).</p>

Properties

Mycoplasma free	Yes
Form	Liquid
Storage instructions	Shipped on Dry Ice. Upon delivery aliquot. Store at -20°C or -80°C. Avoid freeze / thaw cycle.
Storage buffer	<p>pH: 7.50</p> <p>Constituent: 10% DTT</p>
Lysate notes	<p>Note: This lysate was normalised with SDS-PAGE sample buffer to current concentration.</p> <p>This HeLa Nuclear Extract was prepared using a standard nuclear lysate protocol. The concentration was determined using the BCA assay process and then diluted using Dithiothreitol (DTT) and a non-reducing lithium dodecyl sulfate sample loading buffer (LDS).</p>
Background	<p>HeLa cells are human epithelial cells from a fatal cervical carcinoma. The cell line was derived from cervical cancer cells taken from Henrietta Lacks, in 1951. Horizontal gene transfer from human papillomavirus 18 (HPV18) to human cervical cells created the HeLa genome which is different from either parent genome in various ways including its number of chromosomes. HeLa cells have a modal chromosome number of 82, with 4 copies of chromosome 12 and 3 copies of chromosomes 6, 8, and 17. HeLa cells are adherent cells (they stick to surfaces) and maintain contact inhibition in vitro.</p>

Images

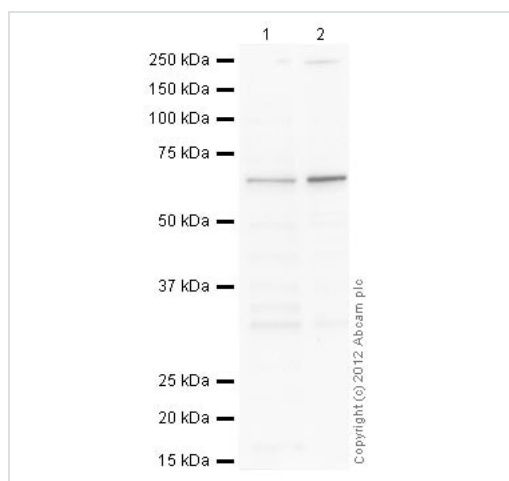


SDS-PAGE - HeLa nuclear extract lysate
(ab150036)

All lanes stained with Optiblot Blue ([ab119211](#)) (20 ml)

Lane 1 : HeLa (Human epithelial carcinoma cell line) Nuclear Lysate (ab150036)

Lysates/proteins at 10 µg per lane.



Western blot - HeLa nuclear extract lysate
(ab150036)

All lanes : Anti-HDAC1 antibody ([ab19845](#)) at 1 µg/ml

Lane 1 : HeLa whole cell lysate ([ab150035](#))

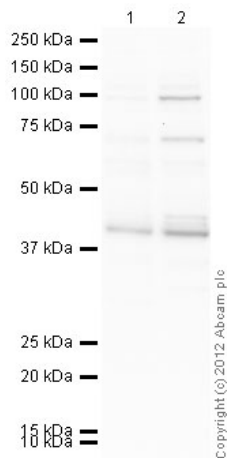
Lane 2 : HeLa nuclear extract lysate (ab150036)

Lysates/proteins at 10 µg per lane.

Secondary

All lanes : Goat Anti-Mouse IgG H&L (HRP) preadsorbed ([ab97040](#)) at 1/5000 dilution

Observed band size: 60 kDa



Western blot - HeLa nuclear extract lysate
(ab150036)

All lanes : Anti-TATA binding protein TBP antibody - Nuclear Loading Control and ChIP Grade ([ab63766](#)) at 1 µg/ml

Lane 1 : HeLa whole cell lysate ([ab150035](#))

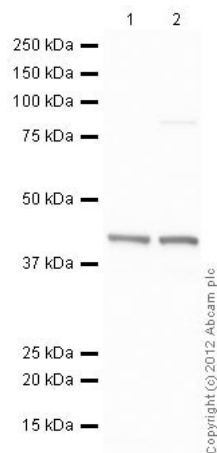
Lane 2 : HeLa nuclear extract lysate (ab150036)

Lysates/proteins at 10 µg per lane.

Secondary

All lanes : Goat Anti-Mouse IgG H&L (HRP) preadsorbed ([ab97040](#)) at 1/5000 dilution

Observed band size: 45 kDa



Western blot - HeLa nuclear extract lysate
(ab150036)

All lanes : Anti-Actin antibody - Loading Control ([ab1801](#)) at 1 µg/ml

Lane 1 : HeLa whole cell lysate ([ab150035](#))

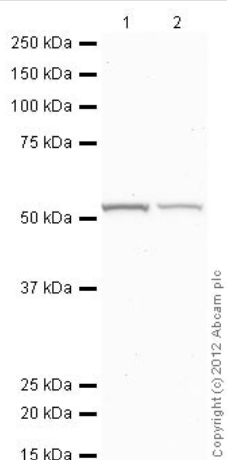
Lane 2 : HeLa nuclear extract lysate (ab150036)

Lysates/proteins at 10 µg per lane.

Secondary

All lanes : Goat Anti-Rabbit IgG H&L (HRP) preadsorbed ([ab97080](#)) at 1/5000 dilution

Observed band size: 42 kDa



Western blot - HeLa nuclear extract lysate
(ab150036)

All lanes : Anti-beta Tubulin antibody ([ab21057](#)) at 1 µg/ml

Lane 1 : HeLa whole cell lysate ([ab150035](#))

Lane 2 : HeLa nuclear extract lysate (ab150036)

Lysates/proteins at 20 µg per lane.

Secondary

All lanes : Rabbit polyclonal to Goat IgG - H&L - Pre-Adsorbed (HRP) ([ab65486](#)) at 1/3000 dilution

Observed band size: 51 kDa

Please note: All products are "FOR RESEARCH USE ONLY. NOT FOR USE IN DIAGNOSTIC PROCEDURES"

Our Abpromise to you: Quality guaranteed and expert technical support

- Replacement or refund for products not performing as stated on the datasheet
- Valid for 12 months from date of delivery
- Response to your inquiry within 24 hours

- We provide support in Chinese, English, French, German, Japanese and Spanish
- Extensive multi-media technical resources to help you
- We investigate all quality concerns to ensure our products perform to the highest standards

If the product does not perform as described on this datasheet, we will offer a refund or replacement. For full details of the Abpromise, please visit <https://www.abcam.com/abpromise> or contact our technical team.

Terms and conditions

- Guarantee only valid for products bought direct from Abcam or one of our authorized distributors