

Product datasheet

Anti-Profilin 1 antibody [EPR6303] ab133529

Recombinant RabMAb

[2 References](#) [2 Images](#)

Overview

Product name	Anti-Profilin 1 antibody [EPR6303]
Description	Rabbit monoclonal [EPR6303] to Profilin 1
Host species	Rabbit
Tested applications	Suitable for: WB, IHC-P Unsuitable for: Flow Cyt, ICC or IP
Species reactivity	Reacts with: Mouse, Rat, Human
Immunogen	Synthetic peptide corresponding to residues in the Human Profilin 1 protein (P07737).
Positive control	Jurkat, JAR, HepG2, and 293T cell lysates; and Human kidney tissue.
General notes	

Our RabMAb[®] technology is a patented hybridoma-based technology for making rabbit monoclonal antibodies. For details on our patents, please refer to [RabMAb[®] patents](#).

This product is a [recombinant rabbit monoclonal antibody](#).

Properties

Form	Liquid
Storage instructions	Shipped at 4°C. Store at -20°C. Stable for 12 months at -20°C.
Storage buffer	pH: 7.40 Preservative: 0.05% Sodium azide Constituents: 40% Glycerol, 9.85% Tris glycine, 50% Tissue culture supernatant
Purity	Tissue culture supernatant
Clonality	Monoclonal
Clone number	EPR6303
Isotype	IgG

Applications

Our [Abpromise guarantee](#) covers the use of **ab133529** in the following tested applications.

The application notes include recommended starting dilutions; optimal dilutions/concentrations should be determined by the end user.

Application	Abreviews	Notes
WB		1/1000 - 1/10000. Predicted molecular weight: 12 kDa.
IHC-P		1/250 - 1/500. Perform heat mediated antigen retrieval with citrate buffer pH 6 before commencing with IHC staining protocol.

Application notes Is unsuitable for Flow Cyt, ICC or IP.

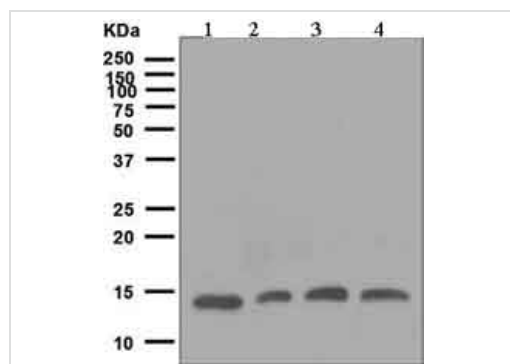
Target

Function Binds to actin and affects the structure of the cytoskeleton. At high concentrations, profilin prevents the polymerization of actin, whereas it enhances it at low concentrations. By binding to PIP2, it inhibits the formation of IP3 and DG.

Sequence similarities Belongs to the profilin family.

Cellular localization Cytoplasm > cytoskeleton.

Images



Western blot - Anti-Profilin 1 antibody [EPR6303] (ab133529)

All lanes : Anti-Profilin 1 antibody [EPR6303] (ab133529) at 1/1000 dilution

Lane 1 : Jurkat cell lysate

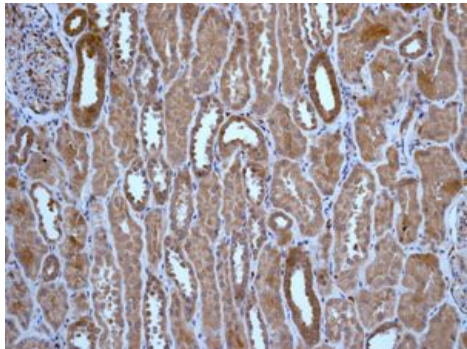
Lane 2 : JAR cell lysate

Lane 3 : HepG2 cell lysate

Lane 4 : 293T cell lysate

Lysates/proteins at 10 µg per lane.

Predicted band size: 12 kDa



Immunohistochemistry analysis of Paraffin Embedded Human kidney tissue labelling Profilin 1 with ab133529 at 1/250.

Immunohistochemistry (Formalin/PFA-fixed paraffin-embedded sections) - Anti-Profilin 1 antibody [EPR6303] (ab133529)

Please note: All products are "FOR RESEARCH USE ONLY. NOT FOR USE IN DIAGNOSTIC PROCEDURES"

Our Abpromise to you: Quality guaranteed and expert technical support

- Replacement or refund for products not performing as stated on the datasheet
- Valid for 12 months from date of delivery
- Response to your inquiry within 24 hours
- We provide support in Chinese, English, French, German, Japanese and Spanish
- Extensive multi-media technical resources to help you
- We investigate all quality concerns to ensure our products perform to the highest standards

If the product does not perform as described on this datasheet, we will offer a refund or replacement. For full details of the Abpromise, please visit <https://www.abcam.com/abpromise> or contact our technical team.

Terms and conditions

- Guarantee only valid for products bought direct from Abcam or one of our authorized distributors