

## Product datasheet

# Anti-Profilin 1 antibody [EPR6303] - BSA and Azide free ab248536

**KO VALIDATED** Recombinant RabMAB

2 Images

### Overview

<b>Product name</b>	Anti-Profilin 1 antibody [EPR6303] - BSA and Azide free
<b>Description</b>	Rabbit monoclonal [EPR6303] to Profilin 1 - BSA and Azide free
<b>Host species</b>	Rabbit
<b>Tested applications</b>	<b>Suitable for:</b> IHC-P, WB <b>Unsuitable for:</b> Flow Cyt, ICC or IP
<b>Species reactivity</b>	<b>Reacts with:</b> Mouse, Rat, Human
<b>Immunogen</b>	Synthetic peptide within Human Profilin 1 aa 1-100. The exact sequence is proprietary. Database link: <a href="#">P07737</a>
<b>General notes</b>	Ab248536 is the carrier-free version of <a href="#">ab133529</a> . This format is designed for use in antibody labeling, including fluorochromes, metal isotopes, oligonucleotides, enzymes.

Our [carrier-free formats](#) are supplied in a buffer free of BSA, sodium azide and glycerol for higher conjugation efficiency.

Use our [conjugation kits](#) for antibody conjugates that are ready-to-use in as little as 20 minutes with <1 minute hands-on-time and 100% antibody recovery: available for fluorescent dyes, HRP, biotin and gold.

ab248536 is compatible with the Maxpar® Antibody Labeling Kit from Fluidigm.

*Maxpar® is a trademark of Fluidigm Canada Inc.*

This product is a recombinant monoclonal antibody, which offers several advantages including:

- High batch-to-batch consistency and reproducibility
- Improved sensitivity and specificity
- Long-term security of supply
- Animal-free production

For more information [see here](#).

Our RabMAB® technology is a patented hybridoma-based technology for making rabbit monoclonal antibodies. For details on our patents, please refer to [RabMAB® patents](#).

Reproducibility is key to advancing scientific discovery and accelerating scientists' next breakthrough.

Abcam is leading the way with our range of recombinant antibodies, knockout-validated antibodies and knockout cell lines, all of which support improved reproducibility.

We are also planning to innovate the way in which we present recommended applications and species on our product datasheets, so that only applications & species that have been tested in our own labs, our suppliers or by selected trusted collaborators are covered by our Abpromise™ guarantee.

In preparation for this, we have started to update the applications & species that this product is Abpromise guaranteed for.

We are also updating the applications & species that this product has been “predicted to work with,” however this information is not covered by our Abpromise guarantee.

Applications & species from publications and Abreviews that have not been tested in our own labs or in those of our suppliers are not covered by the Abpromise guarantee.

Please check that this product meets your needs before purchasing. If you have any questions, special requirements or concerns, please send us an inquiry and/or contact our Support team ahead of purchase. Recommended alternatives for this product can be found below, as well as customer reviews and Q&As.

## Properties

---

<b>Form</b>	Liquid
<b>Storage instructions</b>	Shipped at 4°C. Store at +4°C. Do Not Freeze.
<b>Storage buffer</b>	pH: 7.2 Constituent: PBS
<b>Carrier free</b>	Yes
<b>Purity</b>	Affinity purified
<b>Clonality</b>	Monoclonal
<b>Clone number</b>	EPR6303
<b>Isotype</b>	IgG

## Applications

---

Our [Abpromise guarantee](#) covers the use of **ab248536** in the following tested applications.

The application notes include recommended starting dilutions; optimal dilutions/concentrations should be determined by the end user.

Application	Abreviews	Notes
IHC-P		Use at an assay dependent concentration. Perform heat mediated antigen retrieval with citrate buffer pH 6 before commencing with IHC staining protocol.
WB		Use at an assay dependent concentration. Predicted molecular weight: 12 kDa.

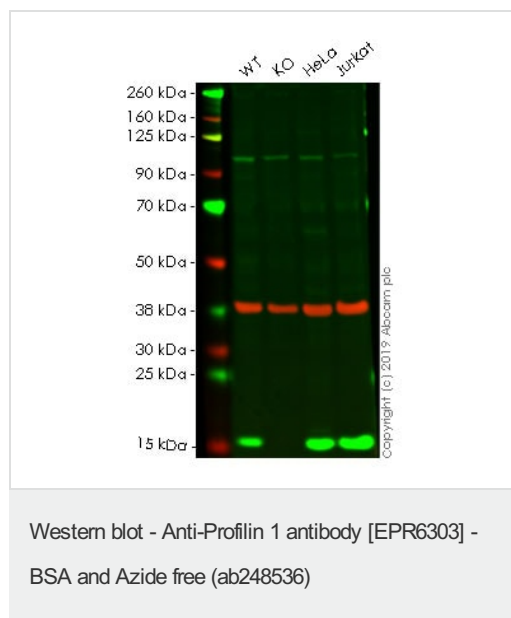
**Application notes**                      Is unsuitable for Flow Cyt, ICC or IP.

## Target

---

<b>Function</b>	Binds to actin and affects the structure of the cytoskeleton. At high concentrations, profilin prevents the polymerization of actin, whereas it enhances it at low concentrations. By binding to PIP2, it inhibits the formation of IP3 and DG.
<b>Sequence similarities</b>	Belongs to the profilin family.
<b>Cellular localization</b>	Cytoplasm > cytoskeleton.

## Images



**All lanes :** Anti-Profilin 1 antibody [EPR6303] ([ab133529](#)) at 1/1000 dilution

**Lane 1 :** Wild-type HAP1 whole cell lysate

**Lane 2 :** PFN1 knockout HAP1 whole cell lysate

**Lane 3 :** HeLa whole cell lysate

**Lane 4 :** Jurkat whole cell lysate

Lysates/proteins at 20 µg per lane.

**Predicted band size:** 12 kDa

This data was developed using the same antibody clone in a different buffer formulation containing PBS, BSA, glycerol, and sodium azide ([ab133529](#)).

**Lanes 1 -4:** Merged signal (red and green). Green - [ab133529](#) observed at 15 kDa. Red - loading control, [ab8245](#), observed at 37 kDa.

[ab133529](#) was shown to specifically react with in wild-type HAP1 cells as signal was lost in PFN1 knockout cells. Wild-type and PFN1 knockout samples were subjected to SDS-PAGE. The membrane was blocked with 3% NF Milk. Ab133529 and [ab8245](#) (Mouse anti-GAPDH loading control) were incubated overnight at 4°C at 1/1000 dilution and 1/20000 dilution respectively. Blots were developed with Goat anti-Rabbit IgG H&L (IRDye® 800CW) preabsorbed [ab216773](#) and Goat anti-Mouse IgG H&L (IRDye® 680RD) preabsorbed [ab216776](#) secondary antibodies at 1/20000 dilution for 1 hour at room temperature before imaging.

### Why choose a recombinant antibody?



**Research with confidence**  
Consistent and reproducible results



**Long-term and scalable supply**  
Recombinant technology



**Success from the first experiment**  
Confirmed specificity



**Ethical standards compliant**  
Animal-free production

Anti-Profilin 1 antibody [EPR6303] - BSA and Azide free (ab248536)

**Please note:** All products are "FOR RESEARCH USE ONLY. NOT FOR USE IN DIAGNOSTIC PROCEDURES"

### Our Abpromise to you: Quality guaranteed and expert technical support

---

- Replacement or refund for products not performing as stated on the datasheet
- Valid for 12 months from date of delivery
- Response to your inquiry within 24 hours
- We provide support in Chinese, English, French, German, Japanese and Spanish
- Extensive multi-media technical resources to help you
- We investigate all quality concerns to ensure our products perform to the highest standards

If the product does not perform as described on this datasheet, we will offer a refund or replacement. For full details of the Abpromise, please visit <https://www.abcam.com/abpromise> or contact our technical team.

### Terms and conditions

---

- Guarantee only valid for products bought direct from Abcam or one of our authorized distributors