

Product datasheet

Anti-Prohibitin antibody ab210082

2 Images

Overview

Product name	Anti-Prohibitin antibody
Description	Rabbit polyclonal to Prohibitin
Host species	Rabbit
Tested applications	Suitable for: IHC - Wholemount, WB
Species reactivity	Reacts with: Zebrafish
Immunogen	Recombinant fragment within Zebrafish Prohibitin aa 42-271. The exact sequence is proprietary. Database link: 321346
Positive control	Zebrafish eye whole cell lysate; 1 day-post-fertilization zebrafish embryo.

Properties

Form	Liquid
Storage instructions	Shipped at 4°C. Store at +4°C short term (1-2 weeks). Upon delivery aliquot. Store at -20°C long term. Avoid freeze / thaw cycle.
Storage buffer	pH: 7.00 Preservative: 0.025% Proclin Constituents: PBS, 20% Glycerol
Purity	Immunogen affinity purified
Clonality	Polyclonal
Isotype	IgG

Applications

Our [Abpromise guarantee](#) covers the use of **ab210082** in the following tested applications.

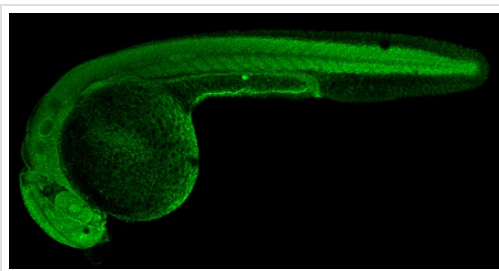
The application notes include recommended starting dilutions; optimal dilutions/concentrations should be determined by the end user.

Application	Abreviews	Notes
IHC - Wholemount		1/100 - 1/500.
WB		1/500 - 1/3000. Predicted molecular weight: 30 kDa.

Target

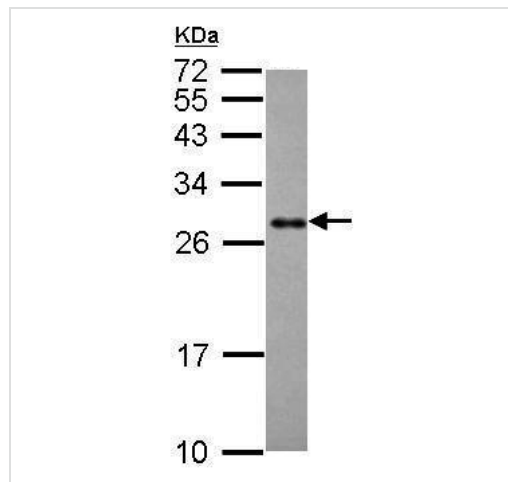
Function	Prohibitin inhibits DNA synthesis. It has a role in regulating proliferation. As yet it is unclear if the protein or the mRNA exhibits this effect. May play a role in regulating mitochondrial respiration activity and in aging.
Tissue specificity	Widely expressed in different tissues.
Sequence similarities	Belongs to the prohibitin family.
Developmental stage	Levels of expression in fibroblasts decrease heterogeneously during cellular aging.
Cellular localization	Mitochondrion inner membrane.

Images



IHC - Wholmount - Anti-Prohibitin antibody
(ab210082)

Whole mount immunohistochemistry of 1 day-post-fertilization zebrafish embryo labeling Prohibitin using ab210082 at 1/100 dilution.



Western blot - Anti-Prohibitin antibody (ab210082)

Anti-Prohibitin antibody (ab210082) at 1/1000 dilution + zebrafish eye whole cell lysate at 30 µg

Predicted band size: 30 kDa

12% SDS-PAGE

Please note: All products are "FOR RESEARCH USE ONLY. NOT FOR USE IN DIAGNOSTIC PROCEDURES"

Our Abpromise to you: Quality guaranteed and expert technical support

- Replacement or refund for products not performing as stated on the datasheet

- Valid for 12 months from date of delivery
- Response to your inquiry within 24 hours

- We provide support in Chinese, English, French, German, Japanese and Spanish
- Extensive multi-media technical resources to help you
- We investigate all quality concerns to ensure our products perform to the highest standards

If the product does not perform as described on this datasheet, we will offer a refund or replacement. For full details of the Abpromise, please visit <https://www.abcam.com/abpromise> or contact our technical team.

Terms and conditions

- Guarantee only valid for products bought direct from Abcam or one of our authorized distributors