

Product datasheet

Anti-Prolactin Receptor/PRL-R antibody [B6.2] - BSA free
ab212746

1 Image

Overview

Product name	Anti-Prolactin Receptor/PRL-R antibody [B6.2] - BSA free
Description	Mouse monoclonal [B6.2] to Prolactin Receptor/PRL-R - BSA free
Host species	Mouse
Tested applications	Suitable for: ICC/IF, Flow Cyt, IHC-P
Species reactivity	Reacts with: Human
Immunogen	Full length native protein (purified) corresponding to Human Prolactin Receptor/PRL-R. Semi-purified. Database link: P16471
Positive control	Human testicular carcinoma tissue.
General notes	Previously labelled as Prolactin Receptor.

Properties

Form	Liquid
Storage instructions	Shipped at 4°C. Store at +4°C short term (1-2 weeks). Upon delivery aliquot. Store at -20°C long term. Avoid freeze / thaw cycle.
Storage buffer	Preservative: 0.05% Sodium azide Constituent: 99% PBS
Purity	Protein A/G purified
Purification notes	purified from Bioreactor Concentrates
Clonality	Monoclonal
Clone number	B6.2
Isotype	IgG1
Light chain type	kappa

Applications

Our [Abpromise guarantee](#) covers the use of **ab212746** in the following tested applications.

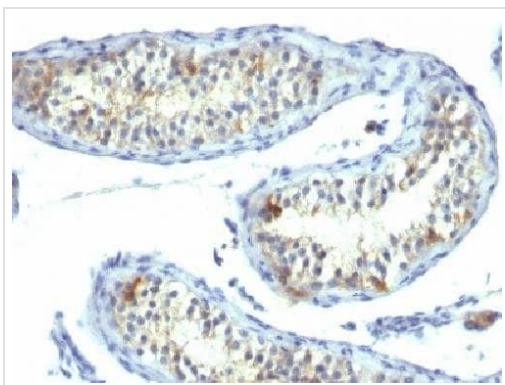
The application notes include recommended starting dilutions; optimal dilutions/concentrations should be determined by the end user.

Application	Abreviews	Notes
ICC/IF		Use a concentration of 0.5 - 1 µg/ml.
Flow Cyt		Use 0.5-1µg for 10 ⁶ cells.
IHC-P		Use a concentration of 0.5 - 1 µg/ml. Perform heat mediated antigen retrieval with citrate buffer pH 6 before commencing with IHC staining protocol.

Target

Function	This is a receptor for the anterior pituitary hormone prolactin (PRL). Isoform 4 is unable to transduce prolactin signaling. Isoform 6 is unable to transduce prolactin signaling.
Tissue specificity	Expressed in breast, placenta, kidney, liver and pancreas.
Sequence similarities	Belongs to the type I cytokine receptor family. Type 1 subfamily. Contains 2 fibronectin type-III domains.
Domain	The WSXWS motif appears to be necessary for proper protein folding and thereby efficient intracellular transport and cell-surface receptor binding. The box 1 motif is required for JAK interaction and/or activation.
Cellular localization	Secreted and Membrane.

Images



Immunohistochemical analysis of formalin-fixed paraffin-embedded Human testicular carcinoma tissue, labeling Prolactin Receptor/PRL-R using ab212746 at 1 µg/mL.

Immunohistochemistry (Formalin/PFA-fixed paraffin-embedded sections) - Anti-Prolactin Receptor/PRL-R antibody [B6.2] - BSA free (ab212746)

Please note: All products are "FOR RESEARCH USE ONLY. NOT FOR USE IN DIAGNOSTIC PROCEDURES"

Our Abpromise to you: Quality guaranteed and expert technical support

- Replacement or refund for products not performing as stated on the datasheet

- Valid for 12 months from date of delivery
- Response to your inquiry within 24 hours

- We provide support in Chinese, English, French, German, Japanese and Spanish
- Extensive multi-media technical resources to help you
- We investigate all quality concerns to ensure our products perform to the highest standards

If the product does not perform as described on this datasheet, we will offer a refund or replacement. For full details of the Abpromise, please visit <https://www.abcam.com/abpromise> or contact our technical team.

Terms and conditions

- Guarantee only valid for products bought direct from Abcam or one of our authorized distributors