

Product datasheet

Anti-Prostacyclin receptor antibody [EPR16518] ab196653

Recombinant RabMAb

3 Images

Overview

| | |
|----------------------------|---|
| Product name | Anti-Prostacyclin receptor antibody [EPR16518] |
| Description | Rabbit monoclonal [EPR16518] to Prostacyclin receptor |
| Host species | Rabbit |
| Tested applications | Suitable for: WB, IHC-P, Flow Cyt |
| Species reactivity | Reacts with: Human |
| Immunogen | Recombinant fragment within Human Prostacyclin receptor aa 250 to the C-terminus. The exact sequence is proprietary. Database link: P43119 |
| Positive control | HepG2 whole cell lysate (ab7900); Human fetal kidney lysate; Human endometrium tissue; HepG2 cells. |

General notes

This product is a recombinant monoclonal antibody, which offers several advantages including:

- High batch-to-batch consistency and reproducibility
- Improved sensitivity and specificity
- Long-term security of supply
- Animal-free production

For more information [see here](#).

Our RabMAb[®] technology is a patented hybridoma-based technology for making rabbit monoclonal antibodies. For details on our patents, please refer to [RabMAb[®] patents](#).

Properties

| | |
|-----------------------------|---|
| Form | Liquid |
| Storage instructions | Shipped at 4°C. Store at +4°C short term (1-2 weeks). Upon delivery aliquot. Store at -20°C long term. Avoid freeze / thaw cycle. |
| Storage buffer | Preservative: 0.01% Sodium azide Constituents: 59% PBS, 40% Glycerol, 0.05% BSA |

| | |
|---------------------|--------------------|
| Purity | Protein A purified |
| Clonality | Monoclonal |
| Clone number | EPR16518 |
| Isotype | IgG |

Applications

Our [Abpromise guarantee](#) covers the use of **ab196653** in the following tested applications.

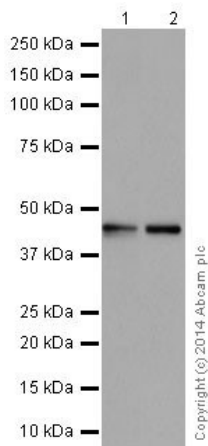
The application notes include recommended starting dilutions; optimal dilutions/concentrations should be determined by the end user.

| Application | Abreviews | Notes |
|-------------|-----------|---|
| WB | | 1/1000. Detects a band of approximately 40 kDa (predicted molecular weight: 41 kDa). |
| IHC-P | | 1/100 - 1/250. Perform heat mediated antigen retrieval with Tris/EDTA buffer pH 9.0 before commencing with IHC staining protocol. |
| Flow Cyt | | 1/120. ab172730 - Rabbit monoclonal IgG, is suitable for use as an isotype control with this antibody. |

Target

| | |
|---|--|
| Function | Receptor for prostacyclin (prostaglandin I ₂ or PGI ₂). The activity of this receptor is mediated by G(s) proteins which activate adenylyl cyclase. |
| Sequence similarities | Belongs to the G-protein coupled receptor 1 family. |
| Post-translational modifications | Palmitoylation of either Cys-308 or Cys-311 is sufficient to maintain functional coupling to G(s) and signaling. Isoprenylation does not influence ligand binding but is required for efficient coupling to the effectors adenylyl cyclase and phospholipase C. |
| Cellular localization | Cell membrane. |

Images



Western blot - Anti-Prostacyclin receptor antibody [EPR16518] (ab196653)

All lanes : Anti-Prostacyclin receptor antibody [EPR16518] (ab196653) at 1/1000 dilution

Lane 1 : HepG2 (Human liver hepatocellular carcinoma) whole cell lysate

Lane 2 : Human fetal kidney lysate

Lysates/proteins at 20 μ g per lane.

Secondary

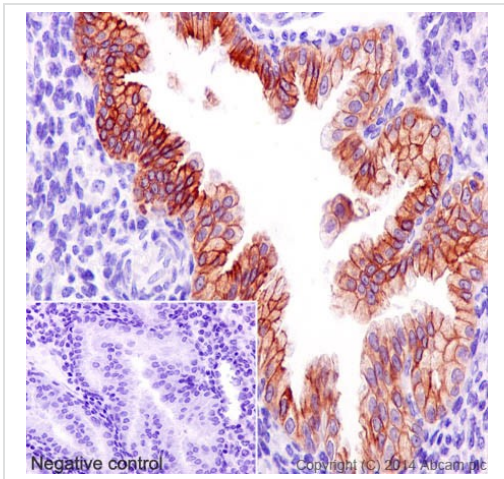
All lanes : Goat Anti-Rabbit IgG, (H+L), Peroxidase conjugated at 1/1000 dilution

Predicted band size: 41 kDa

Observed band size: 40 kDa

[why is the actual band size different from the predicted?](#)

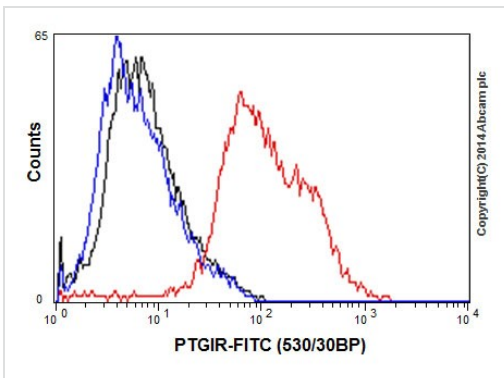
Blocking/Dilution buffer: 5% NFD/MBST.



Immunohistochemistry (Formalin/PFA-fixed paraffin-embedded sections) - Anti-Prostacyclin receptor antibody [EPR16518] (ab196653)

Immunohistochemical analysis of paraffin-embedded Human endometrium tissue labeling Prostacyclin receptor with ab196653 at 1/250 dilution followed by Goat Anti-Rabbit IgG H&L (HRP) (ab97051) secondary antibody at 1/500 dilution. Cell membrane staining on Human endometrium is observed. Counter stained with Hematoxylin.

Perform heat mediated antigen retrieval with Tris/EDTA buffer pH 9.0 before commencing with IHC staining protocol.



Flow Cytometry - Anti-Prostacyclin receptor antibody [EPR16518] (ab196653)

Flow cytometric analysis of 2% paraformaldehyde-fixed HepG2 (Human liver hepatocellular carcinoma) cells labeling Prostacyclin receptor with ab196653 at 1/120 dilution (red) compared with a rabbit monoclonal IgG isotype control (black) and an unlabelled control (cells without incubation with primary antibody and secondary antibody; blue). Goat anti rabbit IgG (FITC) at 1/150 dilution was used as the secondary antibody.

Please note: All products are "FOR RESEARCH USE ONLY. NOT FOR USE IN DIAGNOSTIC PROCEDURES"

Our Abpromise to you: Quality guaranteed and expert technical support

- Replacement or refund for products not performing as stated on the datasheet
- Valid for 12 months from date of delivery
- Response to your inquiry within 24 hours
- We provide support in Chinese, English, French, German, Japanese and Spanish
- Extensive multi-media technical resources to help you
- We investigate all quality concerns to ensure our products perform to the highest standards

If the product does not perform as described on this datasheet, we will offer a refund or replacement. For full details of the Abpromise, please visit <https://www.abcam.com/abpromise> or contact our technical team.

Terms and conditions

- Guarantee only valid for products bought direct from Abcam or one of our authorized distributors