



Product datasheet

Anti-Prostaglandin D Synthase (Lipocalin)/PDS antibody ab167498

1 Image

Overview

Product name	Anti-Prostaglandin D Synthase (Lipocalin)/PDS antibody
Description	Mouse polyclonal to Prostaglandin D Synthase (Lipocalin)/PDS
Host species	Mouse
Tested applications	Suitable for: WB
Species reactivity	Reacts with: Human
Immunogen	<p>Full length protein corresponding to Human Prostaglandin D Synthase (Lipocalin)/PDS aa 1-190. Sequence:</p> <p>MATHHTLWMGLALLGVLGDLQAAPEAQVSVQPNFQQDK FLGRWFSAGLAS NSSWLREKKAALSMCKSVVAPATDGGLNLTSTFLRKNQC ETRTMLLPAG SLGSYSYRSPHWGSTYSVSVVETDYDQYALLYSQGSKGP GEDFRMATLYS RTQTPRAELKEKFTAFCKAQGFTEDTMFLPQTDKCMTEQ</p> <p>Database link: NP_000945.3</p> <p style="text-align: right;">  Run BLAST with  Run BLAST with </p>
Positive control	Prostaglandin D Synthase (Lipocalin)/PDS transfected 293T cell lysate.
General notes	<p>This product was previously labelled as Prostaglandin D Synthase (Lipocalin)</p> <p>Reproducibility is key to advancing scientific discovery and accelerating scientists' next breakthrough.</p> <p>Abcam is leading the way with our range of recombinant antibodies, knockout-validated antibodies and knockout cell lines, all of which support improved reproducibility.</p> <p>We are also planning to innovate the way in which we present recommended applications and species on our product datasheets, so that only applications & species that have been tested in our own labs, our suppliers or by selected trusted collaborators are covered by our Abpromise™ guarantee.</p> <p>In preparation for this, we have started to update the applications & species that this product is Abpromise guaranteed for.</p>

We are also updating the applications & species that this product has been “predicted to work with,” however this information is not covered by our Abpromise guarantee.

Applications & species from publications and Abreviews that have not been tested in our own labs or in those of our suppliers are not covered by the Abpromise guarantee.

Please check that this product meets your needs before purchasing. If you have any questions, special requirements or concerns, please send us an inquiry and/or contact our Support team ahead of purchase. Recommended alternatives for this product can be found below, as well as customer reviews and Q&As.

Properties

Form	Liquid
Storage instructions	Shipped at 4°C. Store at +4°C short term (1-2 weeks). Upon delivery aliquot. Store at -20°C long term.
Storage buffer	pH: 7.4 Constituent: 99% PBS
Purity	Protein A purified
Clonality	Polyclonal
Isotype	IgG

Applications

Our [Abpromise guarantee](#) covers the use of **ab167498** in the following tested applications.

The application notes include recommended starting dilutions; optimal dilutions/concentrations should be determined by the end user.

Application	Abreviews	Notes
WB		Use a concentration of 1 µg/ml. Predicted molecular weight: 21 kDa.

Target

Function Catalyzes the conversion of PGH2 to PGD2, a prostaglandin involved in smooth muscle contraction/relaxation and a potent inhibitor of platelet aggregation. Involved in a variety of CNS functions, such as sedation, NREM sleep and PGE2-induced allodynia, and may have an anti-apoptotic role in oligodendrocytes. Binds small non-substrate lipophilic molecules, including biliverdin, bilirubin, retinal, retinoic acid and thyroid hormone, and may act as a scavenger for harmful hydrophobic molecules and as a secretory retinoid and thyroid hormone transporter. Possibly involved in development and maintenance of the blood-brain, blood-retina, blood-aqueous humor and blood-testis barrier. It is likely to play important roles in both maturation and maintenance of the central nervous system and male reproductive system.

Tissue specificity Abundant in the brain and CNS, where it is expressed in tissues of the blood-brain barrier and secreted into the cerebro-spinal fluid. Abundantly expressed in the heart. In the male reproductive system, it is expressed in the testis, epididymis and prostate, and is secreted into the seminal fluid. Expressed in the eye and secreted into the aqueous humor. Lower levels detected in various tissue fluids such as serum, normal urine, ascitic fluid and tear fluid. Also found in a number of

other organs including ovary, fimbriae of the fallopian tubes, kidney, leukocytes.

Sequence similarities

Belongs to the calycin superfamily. Lipocalin family.

Developmental stage

Expression in the amniotic fluid increases dramatically during weeks 12 to 25 of pregnancy. Levels decrease slowly after 25 weeks.

Domain

Forms a beta-barrel structure that accommodates hydrophobic ligands in its interior.

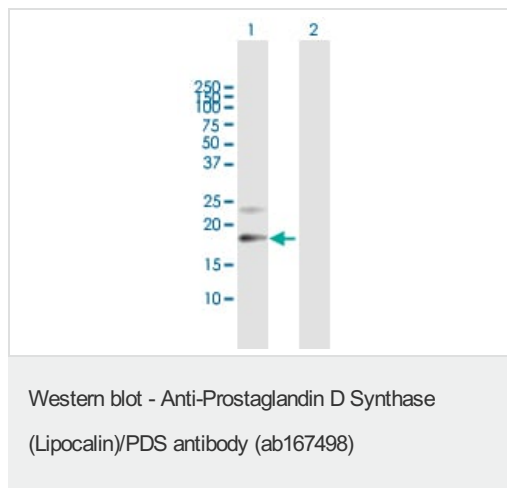
Post-translational modifications

Both N-glycosylation recognition sites are almost quantitatively occupied by N-glycans of the biantennary complex type, with a considerable proportion of structures bearing a bisecting GlcNAc. Agalacto structure as well as sialylated and nonsialylated oligosaccharides bearing alpha2-3- and/or alpha2-6-linked NeuNAc are present.

Cellular localization

Rough endoplasmic reticulum. Nucleus membrane. Golgi apparatus. Cytoplasm > perinuclear region. Secreted. Detected on rough endoplasmic reticulum of arachnoid and meningioma cells. Localized to the nuclear envelope, Golgi apparatus, secretory vesicles and spherical cytoplasmic structures in arachnoid trabecular cells, and to circular cytoplasmic structures in meningeal macrophages and perivascular microglial cells. In oligodendrocytes, localized to the rough endoplasmic reticulum and nuclear envelope. In retinal pigment epithelial cells, localized to distinct cytoplasmic domains including the perinuclear region. Also secreted.

Images



All lanes : Anti-Prostaglandin D Synthase (Lipocalin)/PDS antibody (ab167498) at 1 µg/ml

Lane 1 : Prostaglandin D Synthase (Lipocalin)/PDS transfected 293T cell lysate

Lane 2 : Non-transfected transfected 293T cell lysate

Lysates/proteins at 15 µl per lane.

Secondary

All lanes : Goat anti-Mouse IgG HRP at 1/2500 dilution

Developed using the ECL technique.

Predicted band size: 21 kDa

Please note: All products are "FOR RESEARCH USE ONLY. NOT FOR USE IN DIAGNOSTIC PROCEDURES"

Our Abpromise to you: Quality guaranteed and expert technical support

- Replacement or refund for products not performing as stated on the datasheet
- Valid for 12 months from date of delivery
- Response to your inquiry within 24 hours

- We provide support in Chinese, English, French, German, Japanese and Spanish
- Extensive multi-media technical resources to help you
- We investigate all quality concerns to ensure our products perform to the highest standards

If the product does not perform as described on this datasheet, we will offer a refund or replacement. For full details of the Abpromise, please visit <https://www.abcam.com/abpromise> or contact our technical team.

Terms and conditions

- Guarantee only valid for products bought direct from Abcam or one of our authorized distributors