

# Anti-Prostate Specific Antigen antibody [3E6] ab140337

[2 Images](#)

### Overview

---

<b>Product name</b>	Anti-Prostate Specific Antigen antibody [3E6]
<b>Description</b>	Mouse monoclonal [3E6] to Prostate Specific Antigen
<b>Host species</b>	Mouse
<b>Tested applications</b>	<b>Suitable for:</b> IHC-P, ICC/IF
<b>Species reactivity</b>	<b>Reacts with:</b> Human
<b>Immunogen</b>	Recombinant full length protein corresponding to Human Prostate Specific Antigen aa 1-300. Derived by fusion of SP2/0-Ag14 Mouse myeloma cells with spleen cells from a Mouse immunized with Human Prostate specific Antigen (PSA). Database link: <a href="#">P07288</a>
<b>Positive control</b>	Recombinant Human Prostate Specific Antigen protein (denatured) ( <a href="#">ab126692</a> ) can be used as a positive control in WB. Human prostate tissue; LNCaP cells.
<b>General notes</b>	<p>The Life Science industry has been in the grips of a reproducibility crisis for a number of years. Abcam is leading the way in addressing this with our range of recombinant monoclonal antibodies and knockout edited cell lines for gold-standard validation. Please check that this product meets your needs before purchasing.</p> <p>If you have any questions, special requirements or concerns, please send us an inquiry and/or contact our Support team ahead of purchase. Recommended alternatives for this product can be found below, along with publications, customer reviews and Q&amp;As</p>

### Properties

---

<b>Form</b>	Liquid
<b>Storage instructions</b>	Shipped at 4°C. Store at -20°C or -80°C. Avoid freeze / thaw cycle. Store undiluted.
<b>Storage buffer</b>	pH: 7.20 Preservative: 0.09% Sodium azide Constituent: 99% PBS
<b>Clonality</b>	Monoclonal
<b>Clone number</b>	3E6
<b>Myeloma</b>	Sp2/0-Ag14
<b>Isotype</b>	IgG1

Light chain type

kappa

## Applications

### The Abpromise guarantee

Our **Abpromise guarantee** covers the use of ab140337 in the following tested applications.

The application notes include recommended starting dilutions; optimal dilutions/concentrations should be determined by the end user.

Application	Abreviews	Notes
IHC-P		Use at an assay dependent concentration.
ICC/IF		Use at an assay dependent concentration.

## Target

### Function

Hydrolyzes semenogelin-1 thus leading to the liquefaction of the seminal coagulum.

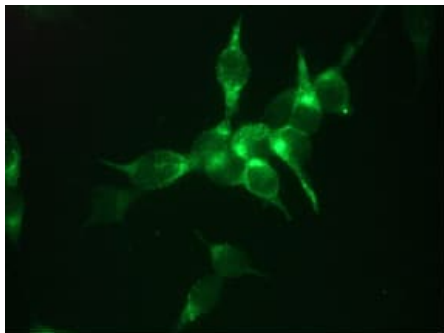
### Sequence similarities

Belongs to the peptidase S1 family. Kallikrein subfamily.  
Contains 1 peptidase S1 domain.

### Cellular localization

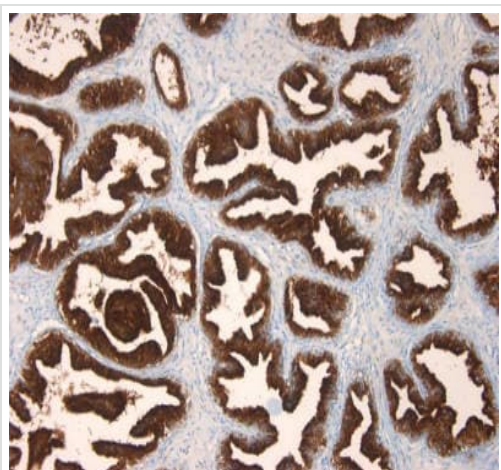
Secreted.

## Images



Immunofluorescent analysis of Human LNCaP cells labelling Prostate Specific Antigen (PSA) with ab140337 at dilution 1/100.

Immunocytochemistry/ Immunofluorescence - Anti-Prostate Specific Antigen antibody [3E6] (ab140337)



Immunohistochemical analysis of paraffin-embedded Human prostate tissue labelling Prostate Specific Antigen (PSA) with ab140337 at dilution 1/100

Immunohistochemistry (Formalin/PFA-fixed paraffin-embedded sections) - Anti-Prostate Specific Antigen antibody [3E6] (ab140337)

**Please note:** All products are "FOR RESEARCH USE ONLY. NOT FOR USE IN DIAGNOSTIC PROCEDURES"

### Our Abpromise to you: Quality guaranteed and expert technical support

---

- Replacement or refund for products not performing as stated on the datasheet
- Valid for 12 months from date of delivery
- Response to your inquiry within 24 hours
- We provide support in Chinese, English, French, German, Japanese and Spanish
- Extensive multi-media technical resources to help you
- We investigate all quality concerns to ensure our products perform to the highest standards

If the product does not perform as described on this datasheet, we will offer a refund or replacement. For full details of the Abpromise, please visit <https://www.abcam.com/abpromise> or contact our technical team.

### Terms and conditions

---

- Guarantee only valid for products bought direct from Abcam or one of our authorized distributors