

Product datasheet

Anti-Prostate Specific Antigen antibody [SP317] ab224799

RabMAb

3 Images

Overview

Product name	Anti-Prostate Specific Antigen antibody [SP317]
Description	Rabbit monoclonal [SP317] to Prostate Specific Antigen
Host species	Rabbit
Tested applications	Suitable for: WB, IHC-P
Species reactivity	Reacts with: Human
Immunogen	Synthetic peptide within Human Prostate Specific Antigen (internal sequence). The exact sequence is proprietary. Database link: P07288
Positive control	WB: LNCaP cell lysate. IHC-P: Human prostate tissue.

Properties

Form	Liquid
Storage instructions	Shipped at 4°C. Store at +4°C short term (1-2 weeks). Upon delivery aliquot. Store at -20°C long term. Avoid freeze / thaw cycle.
Storage buffer	pH: 7.6 Preservative: 0.1% Sodium azide Constituents: PBS, 1% BSA
Purity	Protein A/G purified
Purification notes	Purified from TCS by protein A/G.
Clonality	Monoclonal
Clone number	SP317
Isotype	IgG

Applications

Our [Abpromise guarantee](#) covers the use of **ab224799** in the following tested applications.

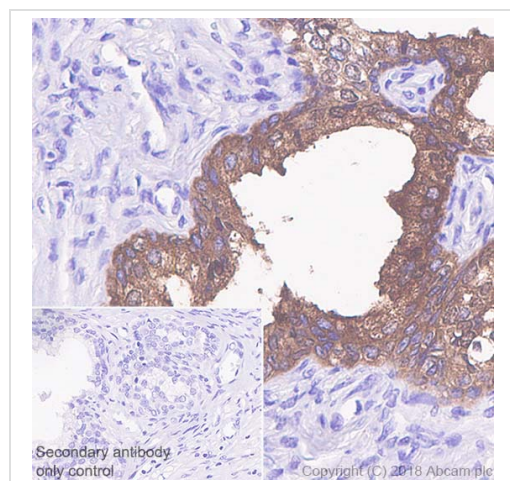
The application notes include recommended starting dilutions; optimal dilutions/concentrations should be determined by the end user.

Application	Abreviews	Notes
WB		1/100. Predicted molecular weight: 29 kDa.
IHC-P		1/100. Perform heat mediated antigen retrieval with EDTA pH 8.0 buffer before commencing with IHC staining protocol.

Target

Function	Hydrolyzes semenogelin-1 thus leading to the liquefaction of the seminal coagulum.
Sequence similarities	Belongs to the peptidase S1 family. Kallikrein subfamily. Contains 1 peptidase S1 domain.
Cellular localization	Secreted.

Images



Immunohistochemistry (Formalin/PFA-fixed paraffin-embedded sections) analysis of Human prostate tissue sections labeling Prostate Specific Antigen with ab224799 at 1/100 dilution (3.83 µg/ml). Heat mediated antigen retrieval with Tris-EDTA buffer (pH 9.0, epitope retrieval solution 2) for 10 mins. Goat Anti-Rabbit & Mouse IgG (HRP) was used as the secondary antibody. Hematoxylin was used as a counterstain. Cytoplasmic staining on the human prostate, performed on a Leica Biosystems BOND™ RX instrument.

The section was incubated with ab224799 for 10 mins at room temperature.

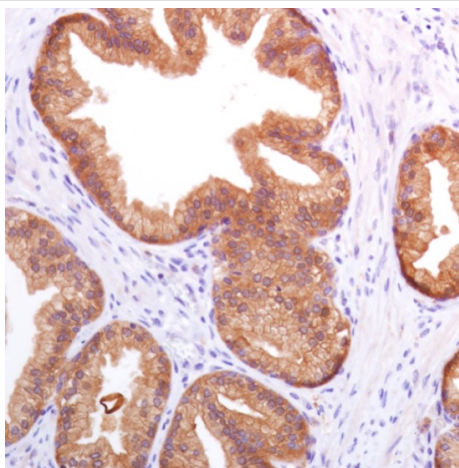
Immunohistochemistry (Formalin/PFA-fixed paraffin-embedded sections) - Anti-Prostate Specific Antigen antibody [SP317] (ab224799)

250-
150-
100-
75-
50-
37-
25-
20-
15-
10-

Anti-Prostate Specific Antigen antibody [SP317] (ab224799) at
1/100 dilution + LNCaP (human prostate cancer cell line) cell lysate

Predicted band size: 29 kDa

Western blot - Anti-Prostate Specific Antigen
antibody [SP317] (ab224799)



Formalin-fixed, paraffin-embedded human prostate tissue stained
for Prostate Specific Antigen using ab224799 at 1/100 dilution in
immunohistochemical analysis.

Immunohistochemistry (Formalin/PFA-fixed paraffin-
embedded sections) - Anti-Prostate Specific Antigen
antibody [SP317] (ab224799)

Please note: All products are "FOR RESEARCH USE ONLY. NOT FOR USE IN DIAGNOSTIC PROCEDURES"

Our Abpromise to you: Quality guaranteed and expert technical support

- Replacement or refund for products not performing as stated on the datasheet
- Valid for 12 months from date of delivery
- Response to your inquiry within 24 hours
- We provide support in Chinese, English, French, German, Japanese and Spanish
- Extensive multi-media technical resources to help you
- We investigate all quality concerns to ensure our products perform to the highest standards

If the product does not perform as described on this datasheet, we will offer a refund or replacement. For full details of the Abpromise, please visit <https://www.abcam.com/abpromise> or contact our technical team.

Terms and conditions

- Guarantee only valid for products bought direct from Abcam or one of our authorized distributors