


## Product datasheet

# Anti-Proteasome 20S alpha 5/PSMA5 antibody ab228600

[5 Images](#)

### Overview

---

<b>Product name</b>	Anti-Proteasome 20S alpha 5/PSMA5 antibody
<b>Description</b>	Rabbit polyclonal to Proteasome 20S alpha 5/PSMA5
<b>Host species</b>	Rabbit
<b>Tested applications</b>	<b>Suitable for:</b> IHC-P, WB, ICC/IF
<b>Species reactivity</b>	<b>Reacts with:</b> Mouse, Human <b>Predicted to work with:</b> Rat, Chicken, Cow, Pig, Xenopus laevis, Zebrafish, Rhesus monkey 
<b>Immunogen</b>	Recombinant fragment within Human Proteasome 20S alpha 5/PSMA5 (internal sequence). The exact sequence is proprietary. Database link: <a href="#">P28066</a>
<b>Positive control</b>	WB: Mouse brain tissue lysate; HEK-293T, A431, HeLa and HepG2 whole cell extracts. IHC-P: Human hepatocellular carcinoma tissue; H1299 xenograft tissue. ICC/IF: HeLa cells.
<b>General notes</b>	This product was previously labelled as Proteasome 20S alpha 5

Reproducibility is key to advancing scientific discovery and accelerating scientists' next breakthrough.

Abcam is leading the way with our range of recombinant antibodies, knockout-validated antibodies and knockout cell lines, all of which support improved reproducibility.

We are also planning to innovate the way in which we present recommended applications and species on our product datasheets, so that only applications & species that have been tested in our own labs, our suppliers or by selected trusted collaborators are covered by our Abpromise™ guarantee.

In preparation for this, we have started to update the applications & species that this product is Abpromise guaranteed for.

We are also updating the applications & species that this product has been “predicted to work with,” however this information is not covered by our Abpromise guarantee.

Applications & species from publications and Abreviews that have not been tested in our own labs or in those of our suppliers are not covered by the Abpromise guarantee.

Please check that this product meets your needs before purchasing. If you have any questions, special requirements or concerns, please send us an inquiry and/or contact our Support team

ahead of purchase. Recommended alternatives for this product can be found below, as well as customer reviews and Q&As.

## Properties

---

<b>Form</b>	Liquid
<b>Storage instructions</b>	Shipped at 4°C. Store at +4°C short term (1-2 weeks). Upon delivery aliquot. Store at -20°C long term. Avoid freeze / thaw cycle.
<b>Storage buffer</b>	pH: 7.00 Preservative: 0.01% Thimerosal (merthiolate) Constituents: 1.21% Tris, 0.75% Glycine, 10% Glycerol (glycerin, glycerine)
<b>Purity</b>	Immunogen affinity purified
<b>Clonality</b>	Polyclonal
<b>Isotype</b>	IgG

## Applications

---

Our [Abpromise guarantee](#) covers the use of **ab228600** in the following tested applications.

The application notes include recommended starting dilutions; optimal dilutions/concentrations should be determined by the end user.

Application	Abreviews	Notes
IHC-P		1/100 - 1/1000.
WB		1/500 - 1/10000. Predicted molecular weight: 26 kDa.
ICC/IF		1/100 - 1/1000.

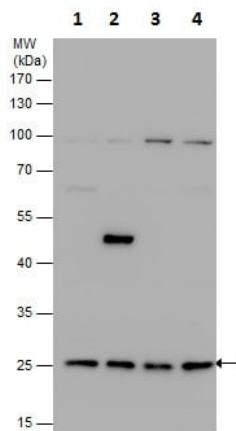
## Target

---

<b>Function</b>	The proteasome is a multicatalytic proteinase complex which is characterized by its ability to cleave peptides with Arg, Phe, Tyr, Leu, and Glu adjacent to the leaving group at neutral or slightly basic pH. The proteasome has an ATP-dependent proteolytic activity.
<b>Tissue specificity</b>	Expressed in fetal brain (at protein level).
<b>Sequence similarities</b>	Belongs to the peptidase T1A family.
<b>Cellular localization</b>	Cytoplasm. Nucleus.

## Images

---



Western blot - Anti-Proteasome 20S alpha 5/PSMA5 antibody (ab228600)

**All lanes :** Anti-Proteasome 20S alpha 5/PSMA5 antibody (ab228600) at 1/1000 dilution

**Lane 1 :** HEK-293T (human epithelial cell line from embryonic kidney transformed with large T antigen) whole cell extract

**Lane 2 :** A431 (human epidermoid carcinoma cell line) whole cell extract

**Lane 3 :** HeLa (human epithelial cell line from cervix adenocarcinoma) whole cell extract

**Lane 4 :** HepG2 (human liver hepatocellular carcinoma cell line) whole cell extract

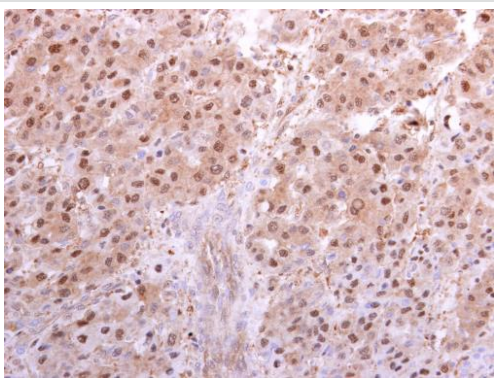
Lysates/proteins at 30 µg per lane.

Developed using the ECL technique.

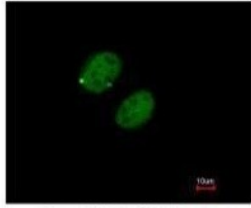
**Predicted band size:** 26 kDa

12% SDS-PAGE

Paraffin-embedded human hepatocellular carcinoma tissue stained for Proteasome 20S alpha 5/PSMA5 with ab228600 at 1/500 dilution in immunohistochemical analysis.



Immunohistochemistry (Formalin/PFA-fixed paraffin-embedded sections) - Anti-Proteasome 20S alpha 5/PSMA5 antibody (ab228600)

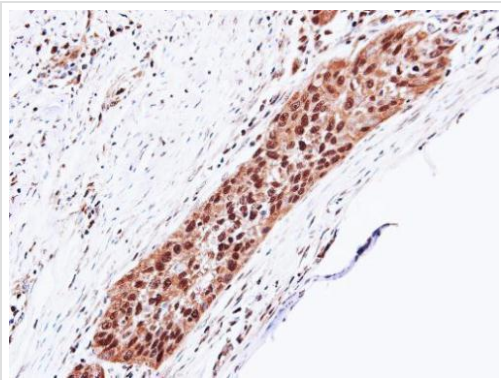


Paraformaldehyde-fixed HeLa (human epithelial cell line from cervix adenocarcinoma) cells stained for Proteasome 20S alpha 5/PSMA5 (green) using ab228600 at 1/200 dilution in ICC/IF.

Blue: DNA probe.

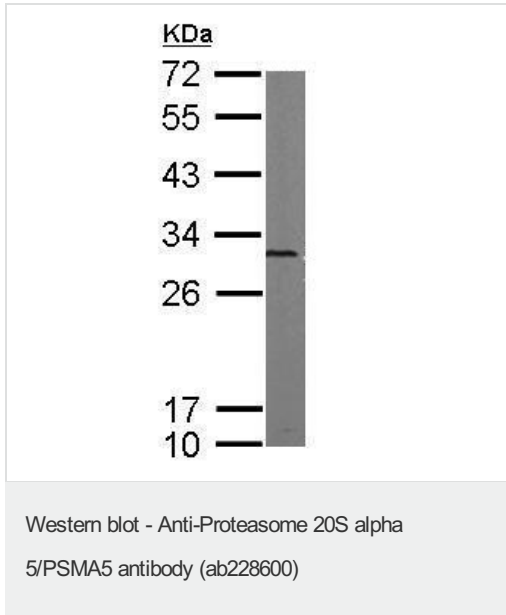


Immunocytochemistry/ Immunofluorescence - Anti-Proteasome 20S alpha 5/PSMA5 antibody (ab228600)



Paraffin-embedded H1299 xenograft tissue stained for Proteasome 20S alpha 5/PSMA5 with ab228600 at 1/100 dilution in immunohistochemical analysis.

Immunohistochemistry (Formalin/PFA-fixed paraffin-embedded sections) - Anti-Proteasome 20S alpha 5/PSMA5 antibody (ab228600)



Anti-Proteasome 20S alpha 5/PSMA5 antibody (ab228600) at  
1/5000 dilution + Mouse brain tissue lysate at 50 µg

Developed using the ECL technique.

**Predicted band size:** 26 kDa

12% SDS-PAGE

**Please note:** All products are "FOR RESEARCH USE ONLY. NOT FOR USE IN DIAGNOSTIC PROCEDURES"

### Our Abpromise to you: Quality guaranteed and expert technical support

---

- Replacement or refund for products not performing as stated on the datasheet
- Valid for 12 months from date of delivery
- Response to your inquiry within 24 hours
- We provide support in Chinese, English, French, German, Japanese and Spanish
- Extensive multi-media technical resources to help you
- We investigate all quality concerns to ensure our products perform to the highest standards

If the product does not perform as described on this datasheet, we will offer a refund or replacement. For full details of the Abpromise, please visit <https://www.abcam.com/abpromise> or contact our technical team.

### Terms and conditions

---

- Guarantee only valid for products bought direct from Abcam or one of our authorized distributors