


Product datasheet

Anti-Proteasome 20S alpha 5/PSMA5 antibody ab228925

4 Images

Overview

Product name	Anti-Proteasome 20S alpha 5/PSMA5 antibody
Description	Rabbit polyclonal to Proteasome 20S alpha 5/PSMA5
Host species	Rabbit
Tested applications	Suitable for: WB, IHC-P, ICC/IF
Species reactivity	Reacts with: Mouse, Rat, Human Predicted to work with: Chicken, Cow, Pig, Xenopus laevis, Zebrafish, Rhesus monkey 
Immunogen	Recombinant fragment within Human Proteasome 20S alpha 5/PSMA5 (internal sequence). The exact sequence is proprietary. Database link: P28066
Positive control	IHC-P: Mouse fore brain tissue. ICC/IF: HeLa cells. WB: HEK-293T, A431, HeLa, HepG2, PC-12 and Rat2 whole cell extracts.
General notes	This product was previously labelled as Proteasome 20S alpha 5

Reproducibility is key to advancing scientific discovery and accelerating scientists' next breakthrough.

Abcam is leading the way with our range of recombinant antibodies, knockout-validated antibodies and knockout cell lines, all of which support improved reproducibility.

We are also planning to innovate the way in which we present recommended applications and species on our product datasheets, so that only applications & species that have been tested in our own labs, our suppliers or by selected trusted collaborators are covered by our Abpromise™ guarantee.

In preparation for this, we have started to update the applications & species that this product is Abpromise guaranteed for.

We are also updating the applications & species that this product has been “predicted to work with,” however this information is not covered by our Abpromise guarantee.

Applications & species from publications and Abreviews that have not been tested in our own labs or in those of our suppliers are not covered by the Abpromise guarantee.

Please check that this product meets your needs before purchasing. If you have any questions, special requirements or concerns, please send us an inquiry and/or contact our Support team ahead of purchase. Recommended alternatives for this product can be found below, as well as

customer reviews and Q&As.

Properties

Form	Liquid
Storage instructions	Shipped at 4°C. Store at +4°C short term (1-2 weeks). Upon delivery aliquot. Store at -20°C long term. Avoid freeze / thaw cycle.
Storage buffer	pH: 7.00 Preservative: 0.01% Thimerosal (merthiolate) Constituents: 79.99% PBS, 20% Glycerol (glycerin, glycerine)
Purity	Immunogen affinity purified
Clonality	Polyclonal
Isotype	IgG

Applications

Our [Abpromise guarantee](#) covers the use of **ab228925** in the following tested applications.

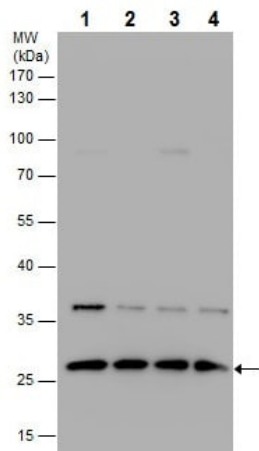
The application notes include recommended starting dilutions; optimal dilutions/concentrations should be determined by the end user.

Application	Abreviews	Notes
WB		1/500 - 1/3000. Predicted molecular weight: 26 kDa.
IHC-P		1/100 - 1/3000.
ICC/IF		1/100 - 1/1000.

Target

Function	The proteasome is a multicatalytic proteinase complex which is characterized by its ability to cleave peptides with Arg, Phe, Tyr, Leu, and Glu adjacent to the leaving group at neutral or slightly basic pH. The proteasome has an ATP-dependent proteolytic activity.
Tissue specificity	Expressed in fetal brain (at protein level).
Sequence similarities	Belongs to the peptidase T1A family.
Cellular localization	Cytoplasm. Nucleus.

Images



Western blot - Anti-Proteasome 20S alpha 5/PSMA5 antibody (ab228925)

All lanes : Anti-Proteasome 20S alpha 5/PSMA5 antibody (ab228925) at 1/1000 dilution

Lane 1 : HEK-293T (human epithelial cell line from embryonic kidney transformed with large T antigen) whole cell extract

Lane 2 : A431 (human epidermoid carcinoma cell line) whole cell extract

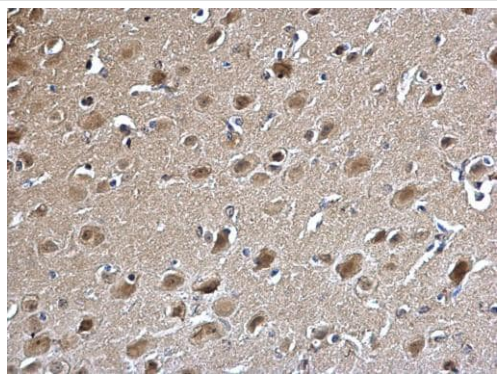
Lane 3 : HeLa (human epithelial cell line from cervix adenocarcinoma) whole cell extract

Lane 4 : HepG2 (human liver hepatocellular carcinoma cell line) whole cell extract

Lysates/proteins at 30 µg per lane.

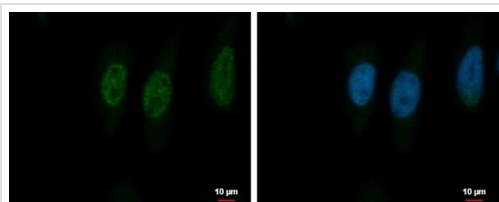
Predicted band size: 26 kDa

12% SDS-PAGE gel.



Immunohistochemistry (Formalin/PFA-fixed paraffin-embedded sections) - Anti-Proteasome 20S alpha 5/PSMA5 antibody (ab228925)

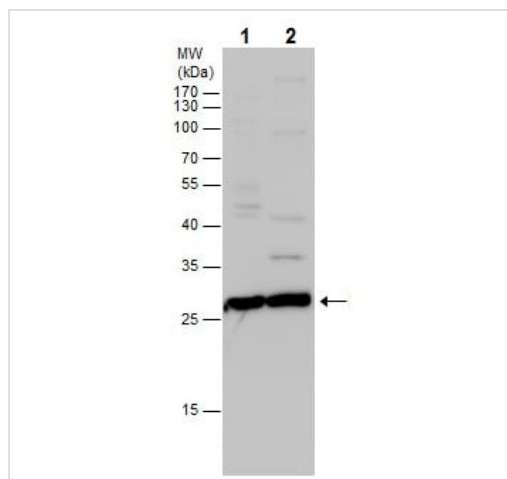
Paraffin-embedded mouse fore brain tissue stained for Proteasome 20S alpha 5/PSMA5 using ab228925 at 1/500 dilution in immunohistochemical analysis.



Immunocytochemistry/ Immunofluorescence - Anti-Proteasome 20S alpha 5/PSMA5 antibody (ab228925)

4% paraformaldehyde-fixed HeLa (human epithelial cell line from cervix adenocarcinoma) cells stained for Proteasome 20S alpha 5/PSMA5 (green) using ab228925 at 1/500 dilution in ICC/IF.

Blue: Hoechst 33342 staining.



Western blot - Anti-Proteasome 20S alpha 5/PSMA5 antibody (ab228925)

All lanes : Anti-Proteasome 20S alpha 5/PSMA5 antibody (ab228925) at 1/1000 dilution

Lane 1 : PC-12 (rat adrenal gland pheochromocytoma cell line) whole cell extract

Lane 2 : Rat2 (rat fibroblast cell line) whole cell extract

Lysates/proteins at 30 µg per lane.

Predicted band size: 26 kDa

12% SDS-PAGE gel.

Please note: All products are "FOR RESEARCH USE ONLY. NOT FOR USE IN DIAGNOSTIC PROCEDURES"

Our Abpromise to you: Quality guaranteed and expert technical support

- Replacement or refund for products not performing as stated on the datasheet
- Valid for 12 months from date of delivery
- Response to your inquiry within 24 hours
- We provide support in Chinese, English, French, German, Japanese and Spanish
- Extensive multi-media technical resources to help you
- We investigate all quality concerns to ensure our products perform to the highest standards

If the product does not perform as described on this datasheet, we will offer a refund or replacement. For full details of the Abpromise, please visit <https://www.abcam.com/abpromise> or contact our technical team.

Terms and conditions

- Guarantee only valid for products bought direct from Abcam or one of our authorized distributors