




Product datasheet

Anti-Proteasome 20S beta 7/PSMB7 antibody ab3332

1 Image

Overview

Product name	Anti-Proteasome 20S beta 7/PSMB7 antibody
Description	Rabbit polyclonal to Proteasome 20S beta 7/PSMB7
Host species	Rabbit
Specificity	Detects Proteasome 20S beta 7/PSMB7 (also known as the beta 2 subunit) from purified bovine and human 26S proteasome samples.
Tested applications	Suitable for: WB, IHC-P
Species reactivity	Reacts with: Cow, Human Predicted to work with: Mouse, Rat, Pig 
Immunogen	Synthetic peptide corresponding to Human Proteasome 20S beta 7/PSMB7 aa 263-277 (N terminal). Sequence: EIEVLEETVQTMDS Database link: Q99436 (Peptide available as ab4948)  Run BLAST with  Run BLAST with
Positive control	Recombinant Human Proteasome 20S beta 7/PSMB7 protein (ab123208) can be used as a positive control in WB.
General notes	This product was previously labelled as Proteasome 20S beta 7

Properties

Form	Liquid
Storage instructions	Shipped at 4°C. Store at +4°C short term (1-2 weeks). Upon delivery aliquot. Store at -20°C or -80°C. Avoid freeze / thaw cycle.
Storage buffer	Constituents: 0.1% BSA, 99% PBS
Purity	Immunogen affinity purified
Clonality	Polyclonal
Isotype	IgG

Applications

Our [Abpromise guarantee](#) covers the use of **ab3332** in the following tested applications.

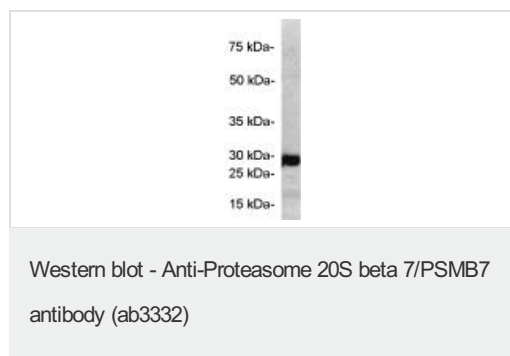
The application notes include recommended starting dilutions; optimal dilutions/concentrations should be determined by the end user.

Application	Abreviews	Notes
WB		Use a concentration of 1 µg/ml. Detects a band of approximately 29 kDa (predicted molecular weight: 90 kDa). Can be blocked with Proteasome 20S beta 7/PSMB7 peptide (ab4948) .
IHC-P		Use at an assay dependent concentration.

Target

Function	The proteasome is a multicatalytic proteinase complex which is characterized by its ability to cleave peptides with Arg, Phe, Tyr, Leu, and Glu adjacent to the leaving group at neutral or slightly basic pH. The proteasome has an ATP-dependent proteolytic activity. This unit is responsible of the trypsin-like activity.
Tissue specificity	Expressed at a low level in colonic mucosa. Up-regulated in colorectal cancer tissues.
Sequence similarities	Belongs to the peptidase T1B family.
Cellular localization	Cytoplasm. Nucleus.

Images



Western blot of Proteasome 20S beta 7/PSMB7 in purified human 26S proteasome samples using ab3332.

Please note: All products are "FOR RESEARCH USE ONLY AND ARE NOT INTENDED FOR DIAGNOSTIC OR THERAPEUTIC USE"

Our Abpromise to you: Quality guaranteed and expert technical support

- Replacement or refund for products not performing as stated on the datasheet
- Valid for 12 months from date of delivery
- Response to your inquiry within 24 hours
- We provide support in Chinese, English, French, German, Japanese and Spanish
- Extensive multi-media technical resources to help you

- We investigate all quality concerns to ensure our products perform to the highest standards

If the product does not perform as described on this datasheet, we will offer a refund or replacement. For full details of the Abpromise, please visit <https://www.abcam.com/abpromise> or contact our technical team.

Terms and conditions

- Guarantee only valid for products bought direct from Abcam or one of our authorized distributors