




Product datasheet

Anti-Proteasome 20S C2/HC2 antibody ab3325

★★★★★ 2 Abreviews 23 References 3 Images

Overview

Product name	Anti-Proteasome 20S C2/HC2 antibody
Description	Rabbit polyclonal to Proteasome 20S C2/HC2
Host species	Rabbit
Specificity	Detects proteasome 20S C2/HC2 subunit.
Tested applications	Suitable for: ICC/IF, WB, IHC-P
Species reactivity	Reacts with: Mouse, Rat, Hamster, Dog, Human Predicted to work with: Chicken, Cow, Cynomolgus monkey 
Immunogen	Synthetic peptide corresponding to Human Proteasome 20S C2/HC2 aa 249-263 (C terminal). Sequence: PADEPAEKADPEMEH Database link: P25786 (Peptide available as ab4943)  Run BLAST with  Run BLAST with
Positive control	Recombinant Human Proteasome 20S C2/HC2 protein (ab116156) can be used as a positive control in WB.
General notes	This product was previously labelled as Proteasome 20S C2

Properties

Form	Liquid
Storage instructions	Shipped at 4°C. Store at +4°C short term (1-2 weeks). Upon delivery aliquot. Store at -20°C or -80°C. Avoid freeze / thaw cycle.
Storage buffer	Constituents: 0.1% BSA, 99% PBS
Purity	Immunogen affinity purified
Clonality	Polyclonal
Isotype	IgG

Applications

Our [Abpromise guarantee](#) covers the use of **ab3325** in the following tested applications.

The application notes include recommended starting dilutions; optimal dilutions/concentrations should be determined by the end user.

Application	Abreviews	Notes
ICC/IF	★★★★☆	1/200.
WB	★★★★★	Use a concentration of 1 µg/ml. Can be blocked with Human Proteasome 20S C2/HC2 peptide (ab4943) .
IHC-P		1/1000. Perform heat mediated antigen retrieval via the microwave method before commencing with IHC staining protocol.

Target

Function

The proteasome is a multicatalytic proteinase complex which is characterized by its ability to cleave peptides with Arg, Phe, Tyr, Leu, and Glu adjacent to the leaving group at neutral or slightly basic pH. The proteasome has an ATP-dependent proteolytic activity. Mediates the lipopolysaccharide-induced signal transduction in the macrophage proteasome (By similarity). Might be involved in the anti-inflammatory response of macrophages during the interaction with *C.albicans* heat-inactivated cells.

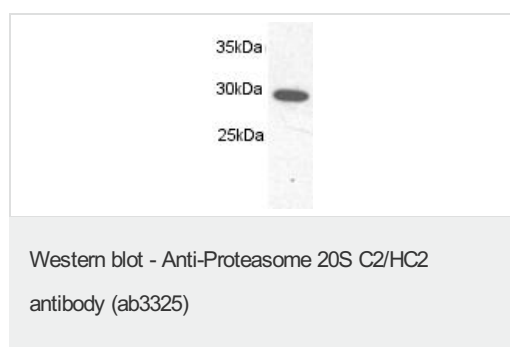
Sequence similarities

Belongs to the peptidase T1A family.

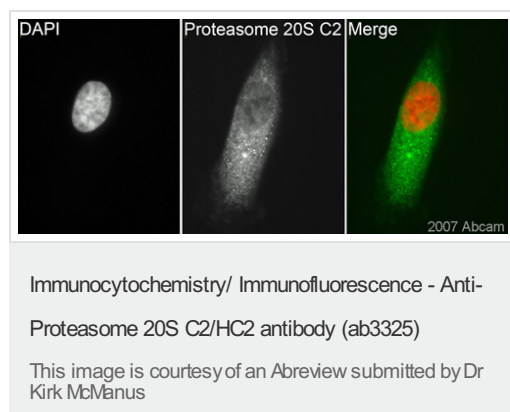
Cellular localization

Cytoplasm. Nucleus.

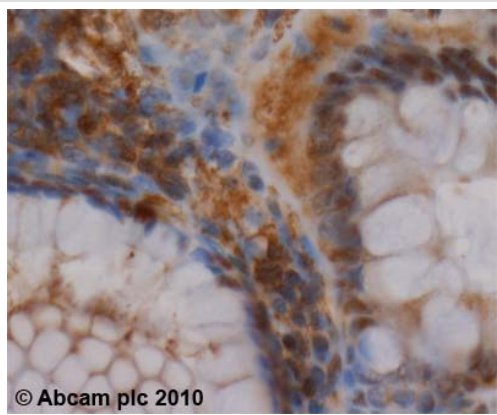
Images



Western blot of 20S C2 subunit in CHO cell extract using ab3325.



ab3325 (1/200) detecting Proteasome 20S C2/HC2 in human RPE-1 cells (green). Cells were fixed with formaldehyde, permeabilized with triton X-100 and counterstained with DAPI in order to highlight the nucleus (red). Please refer to abreview for further experimental details.



Immunohistochemistry (Formalin/PFA-fixed paraffin-embedded sections) - Anti-Proteasome 20S C2/HC2 antibody (ab3325)

ab3325 (1 µg/ml) staining Proteasome 20S C2/HC2 in human colon using an automated system (DAKO Autostainer Plus). Using this protocol there is strong cytoplasmic and nuclear staining. Sections were rehydrated and antigen retrieved with the Dako 3 in 1 AR buffer citrate pH6.1 in a DAKO PT link. Slides were peroxidase blocked in 3% H₂O₂ in methanol for 10 mins. They were then blocked with Dako Protein block for 10 minutes (containing casein 0.25% in PBS) then incubated with primary antibody for 20 min and detected with Dako envision flex amplification kit for 30 minutes. Colorimetric detection was completed with Diaminobenzidine for 5 minutes. Slides were counterstained with Haematoxylin and coverslipped under DePeX. Please note that, for manual staining, optimization of primary antibody concentration and incubation time is recommended. Signal amplification may be required.

Please note: All products are "FOR RESEARCH USE ONLY AND ARE NOT INTENDED FOR DIAGNOSTIC OR THERAPEUTIC USE"

Our Abpromise to you: Quality guaranteed and expert technical support

- Replacement or refund for products not performing as stated on the datasheet
- Valid for 12 months from date of delivery
- Response to your inquiry within 24 hours
- We provide support in Chinese, English, French, German, Japanese and Spanish
- Extensive multi-media technical resources to help you
- We investigate all quality concerns to ensure our products perform to the highest standards

If the product does not perform as described on this datasheet, we will offer a refund or replacement. For full details of the Abpromise, please visit <https://www.abcam.com/abpromise> or contact our technical team.

Terms and conditions

- Guarantee only valid for products bought direct from Abcam or one of our authorized distributors