

## Product datasheet

# Anti-Proteasome Activator Subunit 4/PSME4 antibody ab157158

[3 Images](#)

### Overview

<b>Product name</b>	Anti-Proteasome Activator Subunit 4/PSME4 antibody
<b>Description</b>	Rabbit polyclonal to Proteasome Activator Subunit 4/PSME4
<b>Host species</b>	Rabbit
<b>Tested applications</b>	<b>Suitable for:</b> IHC-P, WB, IP
<b>Species reactivity</b>	<b>Reacts with:</b> Human <b>Predicted to work with:</b> Chimpanzee
<b>Immunogen</b>	Synthetic peptide corresponding to Human Proteasome Activator Subunit 4/PSME4 aa 1-50. Sequence: MEPAERAGVGEPPEPGGRPEPGPRGFVPQKEMYNKLLP YAERLDAESDL  Database link: <a href="#">NP_055429.2</a> <a href="#">Run BLAST with</a> <a href="#">Run BLAST with</a>
<b>Positive control</b>	293T, HeLa and Jurkat whole cell lysates.
<b>General notes</b>	This product was previously labelled as Proteasome Activator Subunit 4

The Life Science industry has been in the grips of a reproducibility crisis for a number of years. Abcam is leading the way in addressing this with our range of recombinant monoclonal antibodies and knockout edited cell lines for gold-standard validation. Please check that this product meets your needs before purchasing.

If you have any questions, special requirements or concerns, please send us an inquiry and/or contact our Support team ahead of purchase. Recommended alternatives for this product can be found below, along with publications, customer reviews and Q&As

### Properties

<b>Form</b>	Liquid
<b>Storage instructions</b>	Shipped at 4°C. Store at +4°C.
<b>Storage buffer</b>	pH: 7

Preservative: 0.09% Sodium azide  
Constituent: 99% Tris citrate/phosphate

pH 7 to 8

<b>Purity</b>	Immunogen affinity purified
<b>Purification notes</b>	ab157158 was affinity purified using an epitope specific to Proteasome Activator Subunit 4/PSME4 immobilized on solid support.
<b>Clonality</b>	Polyclonal
<b>Isotype</b>	IgG

## Applications

---

**The Abpromise guarantee** Our [Abpromise guarantee](#) covers the use of ab157158 in the following tested applications. The application notes include recommended starting dilutions; optimal dilutions/concentrations should be determined by the end user.

Application	Abreviews	Notes
IHC-P		1/1000.
WB		1/1000 - 1/5000. Predicted molecular weight: 211 kDa.
IP		Use at 2-10 µg/mg of lysate.

## Target

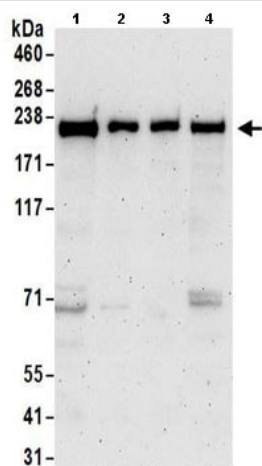
---

<b>Function</b>	Activates proteasomal cleavage of peptides in an energy-independent manner. May be involved in spermatogenesis. May be involved in DNA repair.
<b>Sequence similarities</b>	Contains 6 HEAT repeats.
<b>Cellular localization</b>	Nucleus. Nucleus speckle. Found in nuclear foci following treatment with ionizing radiation, but not with ultraviolet irradiation or H(2).

---

## Images

---



Western blot - Anti-Proteasome Activator Subunit 4/PSME4 antibody (ab157158)

**All lanes :** Anti-Proteasome Activator Subunit 4/PSME4 antibody (ab157158) at 0.4 µg/ml

**Lane 1 :** 293T whole cell lysate at 50 µg

**Lane 2 :** 293T whole cell lysate at 15 µg

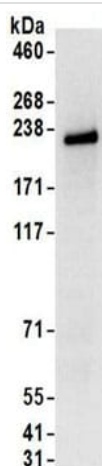
**Lane 3 :** HeLa whole cell lysate at 50 µg

**Lane 4 :** Jurkat whole cell lysate at 50 µg

Developed using the ECL technique.

**Predicted band size:** 211 kDa

**Exposure time:** 3 minutes

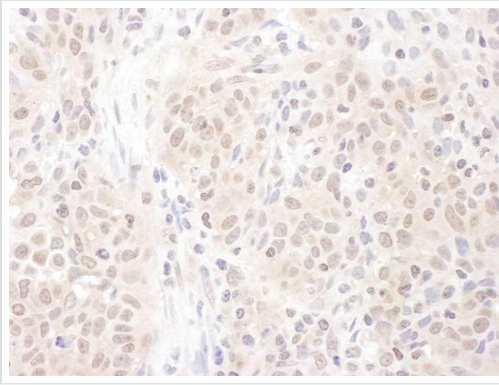


Immunoprecipitation - Anti-Proteasome Activator Subunit 4/PSME4 antibody (ab157158)

Detection of Proteasome Activator Subunit 4/PSME4 by Western Blot of Immunoprecipitate.

ab157158 at 1µg/ml labeling Proteasome Activator Subunit 4/PSME4 in 293T whole cell lysate immunoprecipitated using ab157158 at 6µg/mg lysate (1 mg/IP; 20% of IP loaded/lane).

Detection: Chemiluminescence with exposure time of 10 seconds.



Immunohistochemistry of human non-small cell lung cancer staining Proteasome Activator Subunit 4/PSME4 with ab157158 at 1/1000.

Immunohistochemistry (Formalin/PFA-fixed paraffin-embedded sections) - Anti-Proteasome Activator Subunit 4/PSME4 antibody (ab157158)

**Please note:** All products are "FOR RESEARCH USE ONLY. NOT FOR USE IN DIAGNOSTIC PROCEDURES"

### Our Abpromise to you: Quality guaranteed and expert technical support

---

- Replacement or refund for products not performing as stated on the datasheet
- Valid for 12 months from date of delivery
- Response to your inquiry within 24 hours
- We provide support in Chinese, English, French, German, Japanese and Spanish
- Extensive multi-media technical resources to help you
- We investigate all quality concerns to ensure our products perform to the highest standards

If the product does not perform as described on this datasheet, we will offer a refund or replacement. For full details of the Abpromise, please visit <https://www.abcam.com/abpromise> or contact our technical team.

### Terms and conditions

---

- Guarantee only valid for products bought direct from Abcam or one of our authorized distributors