




Product datasheet

# Anti-Proteasome subunit beta type 2/PSMB2 antibody ab140426

3 Images

Overview

---

<b>Product name</b>	Anti-Proteasome subunit beta type 2/PSMB2 antibody
<b>Description</b>	Rabbit polyclonal to Proteasome subunit beta type 2/PSMB2
<b>Host species</b>	Rabbit
<b>Tested applications</b>	<b>Suitable for:</b> WB, IP, IHC-P
<b>Species reactivity</b>	<b>Reacts with:</b> Human <b>Predicted to work with:</b> Rabbit, Guinea pig, Cow, Dog, Chimpanzee, Rhesus monkey, Gorilla, Orangutan 
<b>Immunogen</b>	Synthetic peptide corresponding to Human Proteasome subunit beta type 2/PSMB2 aa 151-201. Sequence:  ISRERAVELLRKCLEELQKR FILNLPTFSVRIIDKNGIHDL DNI SFPKQG S  Database link: <a href="#">P49721</a>   <a href="#">Run BLAST with</a>  <a href="#">Run BLAST with</a>
<b>Positive control</b>	Recombinant Human Proteasome subunit beta type 2/PSMB2 protein ( <a href="#">ab116169</a> ) can be used as a positive control in WB. 293T, HeLa and Jurkat whole cell lysates.
<b>General notes</b>	This product was previously labelled as PSMB2, Proteasome subunit beta type 2

The Life Science industry has been in the grips of a reproducibility crisis for a number of years. Abcam is leading the way in addressing this with our range of recombinant monoclonal antibodies and knockout edited cell lines for gold-standard validation. Please check that this product meets your needs before purchasing.

If you have any questions, special requirements or concerns, please send us an inquiry and/or contact our Support team ahead of purchase. Recommended alternatives for this product can be found below, along with publications, customer reviews and Q&As

Properties

---

<b>Form</b>	Liquid
<b>Storage instructions</b>	Shipped at 4°C. Store at +4°C.

<b>Storage buffer</b>	pH: 7 Preservative: 0.09% Sodium azide Constituent: 99% Tris citrate/phosphate
	pH 7-8
<b>Purity</b>	Immunogen affinity purified
<b>Purification notes</b>	ab140426 was affinity purified using an epitope specific to Proteasome subunit beta type 2/PSMB2 immobilized on solid support.
<b>Clonality</b>	Polyclonal
<b>Isotype</b>	IgG

## Applications

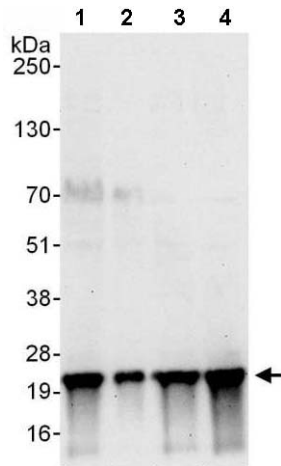
**The Abpromise guarantee** Our [Abpromise guarantee](#) covers the use of ab140426 in the following tested applications. The application notes include recommended starting dilutions; optimal dilutions/concentrations should be determined by the end user.

Application	Abreviews	Notes
WB		1/2000 - 1/10000. Predicted molecular weight: 23 kDa.
IP		Use at 2-10 µg/mg of lysate.
IHC-P		1/5000.

## Target

<b>Function</b>	The proteasome is a multicatalytic proteinase complex which is characterized by its ability to cleave peptides with Arg, Phe, Tyr, Leu, and Glu adjacent to the leaving group at neutral or slightly basic pH. The proteasome has an ATP-dependent proteolytic activity. This subunit has a trypsin-like activity.
<b>Sequence similarities</b>	Belongs to the peptidase T1B family.
<b>Cellular localization</b>	Cytoplasm. Nucleus.

## Images



Western blot - Anti-Proteasome subunit beta type 2/PSMB2 antibody (ab140426)

**All lanes :** Anti-Proteasome subunit beta type 2/PSMB2 antibody (ab140426) at 0.1 µg/ml

**Lane 1 :** 293T whole cell lysate at 50 µg

**Lane 2 :** 293T whole cell lysate at 15 µg

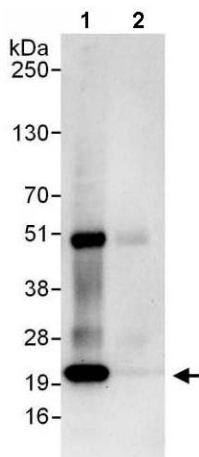
**Lane 3 :** HeLa whole cell lysate at 50 µg

**Lane 4 :** Jurkat whole cell lysate at 50 µg

Developed using the ECL technique.

**Predicted band size:** 23 kDa

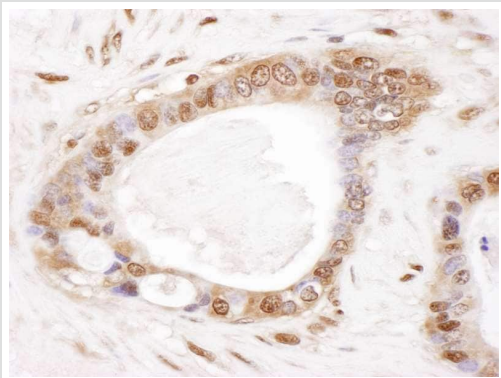
**Exposure time:** 30 seconds



Immunoprecipitation - Anti-Proteasome subunit beta type 2/PSMB2 antibody (ab140426)

Detection of Proteasome subunit beta type 2/PSMB2 in Immunoprecipitates of 293T whole cell lysates (1 mg for IP, 20% of IP loaded) using ab140426 at 6 µg/mg lysate for IP (Lane 1). Lane 2 represents control IgG IP.

Detection: Chemiluminescence with an exposure time of 30 seconds.



Immunohistochemistry of human ovarian carcinoma tissue using ab140426 at 1/5000.

Immunohistochemistry (Formalin/PFA-fixed paraffin-embedded sections) - Anti-Proteasome subunit beta type 2/PSMB2 antibody (ab140426)

**Please note:** All products are "FOR RESEARCH USE ONLY. NOT FOR USE IN DIAGNOSTIC PROCEDURES"

### Our Abpromise to you: Quality guaranteed and expert technical support

---

- Replacement or refund for products not performing as stated on the datasheet
- Valid for 12 months from date of delivery
- Response to your inquiry within 24 hours
- We provide support in Chinese, English, French, German, Japanese and Spanish
- Extensive multi-media technical resources to help you
- We investigate all quality concerns to ensure our products perform to the highest standards

If the product does not perform as described on this datasheet, we will offer a refund or replacement. For full details of the Abpromise, please visit <https://www.abcam.com/abpromise> or contact our technical team.

### Terms and conditions

---

- Guarantee only valid for products bought direct from Abcam or one of our authorized distributors