

Product datasheet

Anti-Proteasome subunit beta type 2/PSMB2 antibody [EPR8826(2)(B)] - BSA and Azide free ab249366

Recombinant RabMAb

6 Images

Overview

Product name	Anti-Proteasome subunit beta type 2/PSMB2 antibody [EPR8826(2)(B)] - BSA and Azide free
Description	Rabbit monoclonal [EPR8826(2)(B)] to Proteasome subunit beta type 2/PSMB2 - BSA and Azide free
Host species	Rabbit
Tested applications	Suitable for: WB, IHC-P, Flow Cyt
Species reactivity	Reacts with: Mouse, Rat, Human
Immunogen	Synthetic peptide within Human Proteasome subunit beta type 2/PSMB2. The exact sequence is proprietary. Database link: P49721
General notes	ab249366 is the carrier-free version of ab166628 This format is designed for use in antibody labeling, including fluorochromes, metal isotopes, oligonucleotides, enzymes.

Our [carrier-free formats](#) are supplied in a buffer free of BSA, sodium azide and glycerol for higher conjugation efficiency.

Use our [conjugation kits](#) for antibody conjugates that are ready-to-use in as little as 20 minutes with <1 minute hands-on-time and 100% antibody recovery: available for fluorescent dyes, HRP, biotin and gold.

Ab249366 is compatible with the Maxpar® Antibody Labeling Kit from Fluidigm.

Maxpar® is a trademark of Fluidigm Canada Inc.

This product was previously labelled as PSMB2, Proteasome subunit beta type 2

This product is a recombinant monoclonal antibody, which offers several advantages including:

- High batch-to-batch consistency and reproducibility
- Improved sensitivity and specificity
- Long-term security of supply
- Animal-free production

For more information [see here](#).

Our RabMAb® technology is a patented hybridoma-based technology for making rabbit monoclonal antibodies. For details on our patents, please refer to [RabMAb® patents](#).

Reproducibility is key to advancing scientific discovery and accelerating scientists' next breakthrough.

Abcam is leading the way with our range of recombinant antibodies, knockout-validated antibodies and knockout cell lines, all of which support improved reproducibility.

We are also planning to innovate the way in which we present recommended applications and species on our product datasheets, so that only applications & species that have been tested in our own labs, our suppliers or by selected trusted collaborators are covered by our Abpromise™ guarantee.

In preparation for this, we have started to update the applications & species that this product is Abpromise guaranteed for.

We are also updating the applications & species that this product has been “predicted to work with,” however this information is not covered by our Abpromise guarantee.

Applications & species from publications and Abreviews that have not been tested in our own labs or in those of our suppliers are not covered by the Abpromise guarantee.

Please check that this product meets your needs before purchasing. If you have any questions, special requirements or concerns, please send us an inquiry and/or contact our Support team ahead of purchase. Recommended alternatives for this product can be found below, as well as customer reviews and Q&As.

Properties

Form	Liquid
Storage instructions	Shipped at 4°C. Store at +4°C. Do Not Freeze.
Storage buffer	pH: 7.2 Constituent: PBS
Carrier free	Yes
Purity	Affinity purified
Clonality	Monoclonal
Clone number	EPR8826(2)(B)
Isotype	IgG

Applications

Our [Abpromise guarantee](#) covers the use of **ab249366** in the following tested applications.

The application notes include recommended starting dilutions; optimal dilutions/concentrations should be determined by the end user.

Application	Abreviews	Notes
WB		Use at an assay dependent concentration. Predicted molecular weight: 23 kDa.
IHC-P		Use at an assay dependent concentration. Perform heat mediated antigen retrieval with citrate buffer pH 6 before commencing with IHC staining protocol.
Flow Cyt		Use at an assay dependent concentration.

Target

Function

The proteasome is a multicatalytic proteinase complex which is characterized by its ability to cleave peptides with Arg, Phe, Tyr, Leu, and Glu adjacent to the leaving group at neutral or slightly basic pH. The proteasome has an ATP-dependent proteolytic activity. This subunit has a trypsin-like activity.

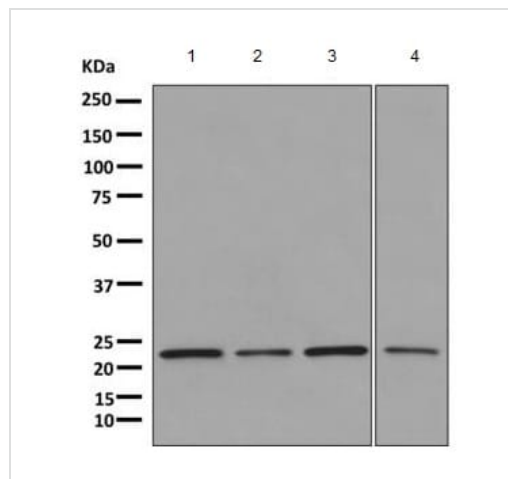
Sequence similarities

Belongs to the peptidase T1B family.

Cellular localization

Cytoplasm. Nucleus.

Images



Western blot - Anti-Proteasome subunit beta type 2/PSMB2 antibody [EPR8826(2)(B)] - BSA and Azide free (ab249366)

All lanes : Anti-Proteasome subunit beta type 2/PSMB2 antibody [EPR8826(2)(B)] ([ab166628](#)) at 1/1000 dilution

Lane 1 : Jurkat cell lysate

Lane 2 : HepG2 cell lysate

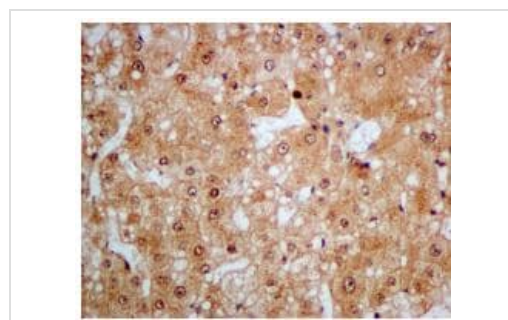
Lane 3 : HeLa cell lysate

Lane 4 : LoVo cell lysate

Lysates/proteins at 10 µg per lane.

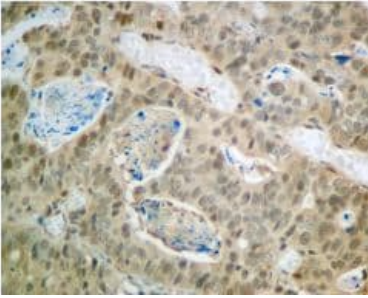
Predicted band size: 23 kDa

This data was developed using [ab166628](#), the same antibody clone in a different buffer formulation.



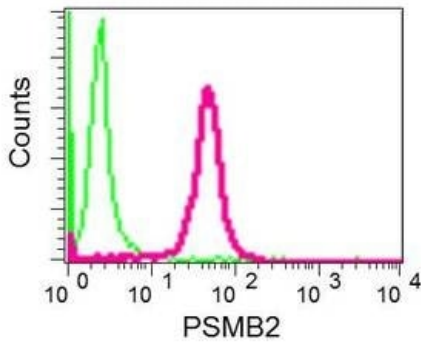
Immunohistochemistry (Formalin/PFA-fixed paraffin-embedded sections) - Anti-Proteasome subunit beta type 2/PSMB2 antibody [EPR8826(2)(B)] - BSA and Azide free (ab249366)

This data was developed using [ab166628](#), the same antibody clone in a different buffer formulation. Immunohistochemical analysis of paraffin embedded Human liver tissue labeling Proteasome subunit beta type 2/PSMB2 with [ab166628](#) at a 1/100 dilution. Perform heat mediated antigen retrieval with citrate buffer pH 6 before commencing with IHC staining protocol.



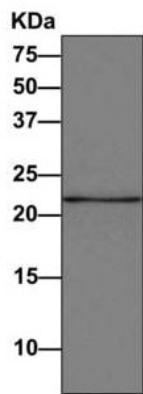
Immunohistochemistry (Formalin/PFA-fixed paraffin-embedded sections) - Anti-Proteasome subunit beta type 2/PSMB2 antibody [EPR8826(2)(B)] - BSA and Azide free (ab249366)

This data was developed using [ab166628](#), the same antibody clone in a different buffer formulation. Immunohistochemical analysis of paraffin embedded Human gastric carcinoma tissue labeling Proteasome subunit beta type 2/PSMB2 with [ab166628](#) at a 1/100 dilution. Perform heat mediated antigen retrieval with citrate buffer pH 6 before commencing with IHC staining protocol.



Flow Cytometry - Anti-Proteasome subunit beta type 2/PSMB2 antibody [EPR8826(2)(B)] - BSA and Azide free (ab249366)

This data was developed using [ab166628](#), the same antibody clone in a different buffer formulation. Flow cytometric analysis of permeabilized Jurkat cells using [ab166628](#) at a 1/100 dilution (red) or a Rabbit IgG (negative) (green).



Western blot - Anti-Proteasome subunit beta type 2/PSMB2 antibody [EPR8826(2)(B)] - BSA and Azide free (ab249366)

Anti-Proteasome subunit beta type 2/PSMB2 antibody [EPR8826(2)(B)] ([ab166628](#)) at 1/1000 dilution + immunoprecipitation pellet from HeLa cell lysate at 10 µg

Secondary

HRP-conjugated anti-Rabbit IgG preferentially detecting the non-reduced form of Rabbit IgG.

Predicted band size: 23 kDa

This data was developed using [ab166628](#), the same antibody clone in a different buffer formulation.

Why choose a recombinant antibody?



Research with confidence
Consistent and reproducible results



Long-term and scalable supply
Recombinant technology



Success from the first experiment
Confirmed specificity



Ethical standards compliant
Animal-free production

Anti-Proteasome subunit beta type 2/PSMB2 antibody [EPR8826(2)(B)] - BSA and Azide free (ab249366)

Please note: All products are "FOR RESEARCH USE ONLY. NOT FOR USE IN DIAGNOSTIC PROCEDURES"

Our Abpromise to you: Quality guaranteed and expert technical support

- Replacement or refund for products not performing as stated on the datasheet
- Valid for 12 months from date of delivery
- Response to your inquiry within 24 hours
- We provide support in Chinese, English, French, German, Japanese and Spanish
- Extensive multi-media technical resources to help you
- We investigate all quality concerns to ensure our products perform to the highest standards

If the product does not perform as described on this datasheet, we will offer a refund or replacement. For full details of the Abpromise, please visit <https://www.abcam.com/abpromise> or contact our technical team.

Terms and conditions

- Guarantee only valid for products bought direct from Abcam or one of our authorized distributors