

Product datasheet

Anti-Proteinase Activated Receptor 3/PAR-3 antibody
 ab200400

2 Images

Overview

Product name	Anti-Proteinase Activated Receptor 3/PAR-3 antibody
Description	Rabbit polyclonal to Proteinase Activated Receptor 3/PAR-3
Host species	Rabbit
Tested applications	Suitable for: IHC-P
Species reactivity	Reacts with: Human
Immunogen	Synthetic peptide corresponding to Human Proteinase Activated Receptor 3/PAR-3 (internal sequence). (NP_004092) Database link: O00254
Positive control	Human prostate cancer tissue, Human colon cancer tissue
General notes	Protein previously labeled as Proteinase Activated Receptor 3.

Properties

Form	Liquid
Storage instructions	Shipped at 4°C. Store at +4°C short term (1-2 weeks). Upon delivery aliquot. Store at -20°C long term. Avoid freeze / thaw cycle.
Storage buffer	pH: 7.3 Preservative: 0.05% Sodium azide Constituents: 49% PBS, 50% Glycerol
Purity	Immunogen affinity purified
Clonality	Polyclonal
Isotype	IgG

Applications

Our [Abpromise guarantee](#) covers the use of **ab200400** in the following tested applications.

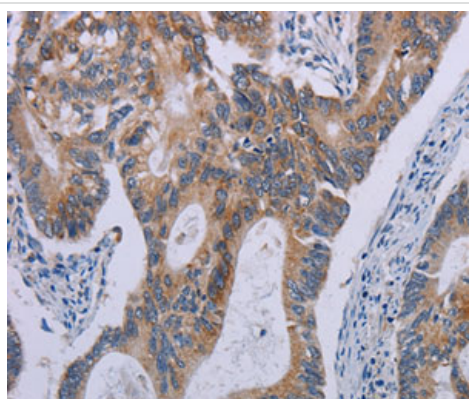
The application notes include recommended starting dilutions; optimal dilutions/concentrations should be determined by the end user.

Application	Abreviews	Notes
IHC-P		1/25 - 1/100.

Target

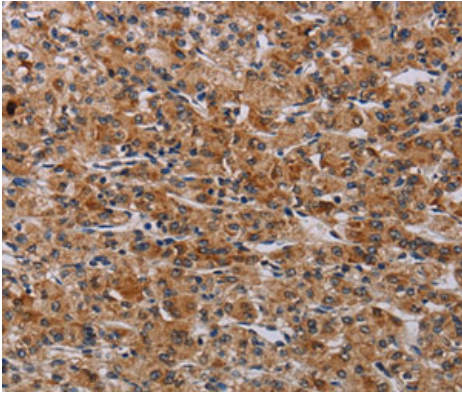
Function	Receptor for activated thrombin coupled to G proteins that stimulate phosphoinositide hydrolysis.
Tissue specificity	Highest expression in the megakaryocytes of the bone marrow, lower in mature megakaryocytes, in platelets and in a variety of other tissues such as heart and gut.
Sequence similarities	Belongs to the G-protein coupled receptor 1 family.
Post-translational modifications	A proteolytic cleavage generates a new N-terminus that functions as a tethered ligand.
Cellular localization	Cell membrane.

Images



Immunohistochemical analysis of paraffin-embedded Human colon cancer tissue labeling Proteinase Activated Receptor 3/PAR-3 with ab200400 at 1/30 dilution.

Immunohistochemistry (Formalin/PFA-fixed paraffin-embedded sections) - Anti-Proteinase Activated Receptor 3/PAR-3 antibody (ab200400)



Immunohistochemical analysis of paraffin-embedded Human prostate cancer tissue labeling Proteinase Activated Receptor 3/PAR-3 with ab200400 at 1/30 dilution.

Immunohistochemistry (Formalin/PFA-fixed paraffin-embedded sections) - Anti-Proteinase Activated Receptor 3/PAR-3 antibody (ab200400)

Please note: All products are "FOR RESEARCH USE ONLY. NOT FOR USE IN DIAGNOSTIC PROCEDURES"

Our Abpromise to you: Quality guaranteed and expert technical support

- Replacement or refund for products not performing as stated on the datasheet
- Valid for 12 months from date of delivery
- Response to your inquiry within 24 hours
- We provide support in Chinese, English, French, German, Japanese and Spanish
- Extensive multi-media technical resources to help you
- We investigate all quality concerns to ensure our products perform to the highest standards

If the product does not perform as described on this datasheet, we will offer a refund or replacement. For full details of the Abpromise, please visit <https://www.abcam.com/abpromise> or contact our technical team.

Terms and conditions

- Guarantee only valid for products bought direct from Abcam or one of our authorized distributors