

Product datasheet

Anti-PRSS1 antibody [EPR19497] ab200996

Recombinant RabMAb

1 References 5 Images

Overview

Product name	Anti-PRSS1 antibody [EPR19497]
Description	Rabbit monoclonal [EPR19497] to PRSS1
Host species	Rabbit
Tested applications	Suitable for: IHC-P, WB
Species reactivity	Reacts with: Human
Immunogen	Recombinant fragment within Human PRSS1 aa 1-150. The exact sequence is proprietary. Database link: P07477
Positive control	WB: Human PRSS1 fragment recombinant protein; Human pancreas lysate. IHC-P: Human pancreas tissue.
General notes	

Our RabMAb[®] technology is a patented hybridoma-based technology for making rabbit monoclonal antibodies. For details on our patents, please refer to [RabMAb[®] patents](#).

This product is a [recombinant rabbit monoclonal antibody](#).

Properties

Form	Liquid
Storage instructions	Shipped at 4°C. Store at +4°C short term (1-2 weeks). Upon delivery aliquot. Store at -20°C long term. Avoid freeze / thaw cycle.
Storage buffer	Preservative: 0.01% Sodium azide Constituents: 59% PBS, 40% Glycerol, 0.05% BSA
Purity	Protein A purified
Clonality	Monoclonal
Clone number	EPR19497
Isotype	IgG

Applications

Our [Abpromise guarantee](#) covers the use of **ab200996** in the following tested applications.

The application notes include recommended starting dilutions; optimal dilutions/concentrations should be determined by the end user.

Application	Abreviews	Notes
IHC-P		1/8000. Perform heat mediated antigen retrieval with Tris/EDTA buffer pH 9.0 before commencing with IHC staining protocol.
WB		1/5000. Detects a band of approximately 27 kDa (predicted molecular weight: 27 kDa).

Target

Function Has activity against the synthetic substrates Boc-Phe-Ser-Arg-Mec, Boc-Leu-Thr-Arg-Mec, Boc-Gln-Ala-Arg-Mec and Boc-Val-Pro-Arg-Mec. The single-chain form is more active than the two-chain form against all of these substrates.

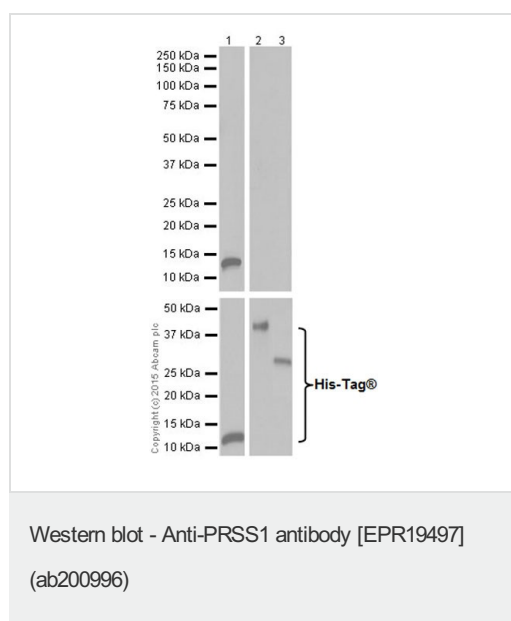
Involvement in disease Defects in PRSS1 are a cause of hereditary pancreatitis (HPC) [MIM:167800]; also known as chronic pancreatitis (CP). HPC is an autosomal dominant disease characterized by the presence of calculi in pancreatic ducts. It causes severe abdominal pain attacks.

Sequence similarities Belongs to the peptidase S1 family.
Contains 1 peptidase S1 domain.

Post-translational modifications Occurs in a single-chain form and a two-chain form, produced by proteolytic cleavage after Arg-122.

Cellular localization Secreted > extracellular space.

Images



All lanes : Anti-PRSS1 antibody [EPR19497] (ab200996) at 1/1000 dilution

Lane 1 : Human PRSS1 fragment recombinant protein

Lane 2 : Human TRY3 full length recombinant protein

Lane 3 : Human TRY6 full length recombinant protein

Lysates/proteins at 0.01 µg per lane.

Secondary

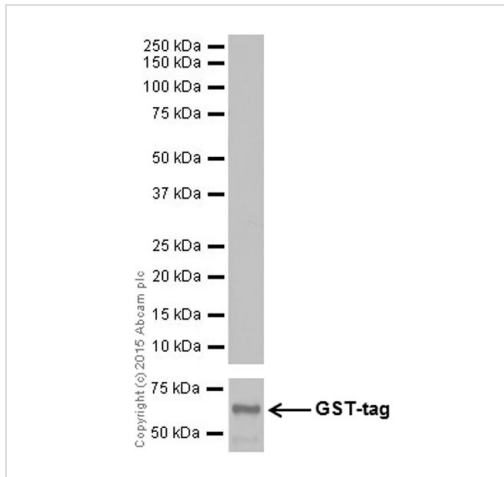
All lanes : Goat Anti-Rabbit IgG H&L (HRP) (ab97051) at 1/100000 dilution

Predicted band size: 27 kDa

Blocking/Dilution buffer: 5% NFD/MBST.

Exposure time: Lane 1: 1 second; Lane 2 and 3: 3 minutes.

Human PRSS1 fragment recombinant protein contains aa24-122 with a His-Tag[®]. Human TRY3 full length recombinant protein contains aa1-304 with a His-Tag[®]. Human TRY6 full length recombinant protein contains aa1-247 with a His-Tag[®]. These three recombinant proteins were made in-house.



Western blot - Anti-PRSS1 antibody [EPR19497] (ab200996)

Anti-PRSS1 antibody [EPR19497] (ab200996) at 1/1000 dilution + Human TRY2 full length recombinant protein at 0.01 μ g

Secondary

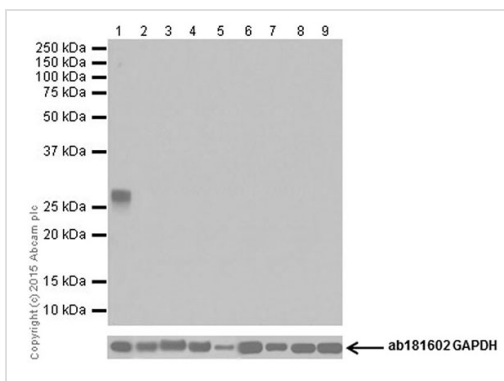
Goat Anti-Rabbit IgG H&L (HRP) (ab97051) at 1/100000 dilution

Predicted band size: 27 kDa

Exposure time: 3 minutes

Blocking/Dilution buffer: 5% NFDm/TBST.

Human TRY2 full length recombinant protein contains aa1-247 with a GST-Tag. It was made in-house.



Western blot - Anti-PRSS1 antibody [EPR19497] (ab200996)

All lanes : Anti-PRSS1 antibody [EPR19497] (ab200996) at 1/5000 dilution

Lane 1 : Human pancreas lysate

Lane 2 : Human fetal liver lysate

Lane 3 : Human fetal heart lysate

Lane 4 : Human fetal kidney lysate

Lane 5 : Human fetal spleen lysate

Lane 6 : Human fetal lung lysate

Lane 7 : BxPC-3 (Human pancreas adenocarcinoma cell line) whole cell lysate

Lane 8 : THP-1 (Human monocytic leukemia cell line) whole cell lysate

Lane 9 : HT-29 (Human colorectal adenocarcinoma cell line) whole cell lysate

Lysates/proteins at 10 μ g per lane.

Secondary

All lanes : Goat Anti-Rabbit IgG Peroxidase Conjugate, specific to

the non-reduced form of IgG at 1/10000 dilution

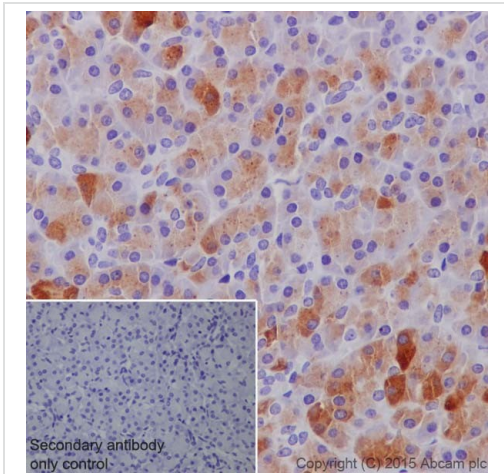
Predicted band size: 27 kDa

Observed band size: 27 kDa

Exposure time: 3 minutes

Blocking/Dilution buffer: 5% NFDm/TBST.

Trypsin 1, encoded by the PRSS1 gene, is synthesized in the pancreas. The expression profile observed is consistent with what has been described in the literatures (PMID: 3011602, 7945238, 24722290).

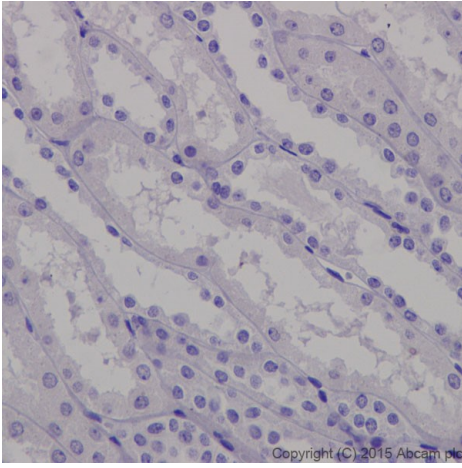


Immunohistochemical analysis of paraffin-embedded Human pancreas tissue labeling PRSS1 with ab200996 at 1/8000 dilution, followed by Goat Anti-Rabbit IgG H&L (HRP) ([ab97051](#)) at 1/500 dilution. Cytoplasm staining on acinar cells Human pancreas is observed. Counter stained with Hematoxylin.

Secondary antibody only control: Used PBS instead of primary antibody, secondary antibody is Goat Anti-Rabbit IgG H&L (HRP) ([ab97051](#)) at 1/500 dilution.

Perform heat mediated antigen retrieval with Tris/EDTA buffer pH 9.0 before commencing with IHC staining protocol.

Immunohistochemistry (Formalin/PFA-fixed paraffin-embedded sections) - Anti-PRSS1 antibody [EPR19497] (ab200996)



Immunohistochemistry (Formalin/PFA-fixed paraffin-embedded sections) - Anti-PRSS1 antibody [EPR19497] (ab200996)

Immunohistochemical analysis of paraffin-embedded Human kidney tissue labeling PRSS1 with ab200996 at 1/8000 dilution, followed by Goat Anti-Rabbit IgG H&L (HRP) (ab97051) at 1/500 dilution. Negative staining on Human kidney. Counter stained with Hematoxylin.

Secondary antibody only control: Used PBS instead of primary antibody, secondary antibody is ab97051 at 1/500 dilution.

Perform heat mediated antigen retrieval with Tris/EDTA buffer pH 9.0 before commencing with IHC staining protocol.

Please note: All products are "FOR RESEARCH USE ONLY. NOT FOR USE IN DIAGNOSTIC PROCEDURES"

Our Abpromise to you: Quality guaranteed and expert technical support

- Replacement or refund for products not performing as stated on the datasheet
- Valid for 12 months from date of delivery
- Response to your inquiry within 24 hours
- We provide support in Chinese, English, French, German, Japanese and Spanish
- Extensive multi-media technical resources to help you
- We investigate all quality concerns to ensure our products perform to the highest standards

If the product does not perform as described on this datasheet, we will offer a refund or replacement. For full details of the Abpromise, please visit <https://www.abcam.com/abpromise> or contact our technical team.

Terms and conditions

- Guarantee only valid for products bought direct from Abcam or one of our authorized distributors