



Product datasheet

Anti-PRSS22 antibody ab197158

2 Images

Overview

Product name	Anti-PRSS22 antibody
Description	Rabbit polyclonal to PRSS22
Host species	Rabbit
Tested applications	Suitable for: IHC-P, WB
Species reactivity	Reacts with: Human
Immunogen	<p>Recombinant fragment corresponding to Human PRSS22 aa 87-291. (BC009726). Sequence:</p> <p>TAAHCFKDNLNKPYLFSVLLGAWQLGNPGRSRSQKVG VAWVEPHPVYSWKE GACADIALVRLERSIQFSERVLPICLPDASIHLPNTHC WISGWGSIQDG VPLPHPQTLQKLVPIIDSEVCSHLYWRGAGQGPIED MLCAGYLEGERD ACLGDSGGPLMCQVDGAWLLAGIISWGEGCAERNRP GVYISLSAHRSWVE KIVQG</p> <p>Database link: Q9GZN4</p> <p style="text-align: right;"> Run BLAST with  Run BLAST with</p>
Positive control	Human fetal lung lysate; Human fetal pancreas tissue.

Properties

Form	Lyophilised:Reconstitute in 200 uL sterile water.
Storage instructions	Shipped at 4°C. Store at +4°C short term (1-2 weeks). Upon delivery aliquot. Store at -20°C long term. Avoid freeze / thaw cycle.
Storage buffer	<p>pH: 7.20 Preservative: 0.02% Sodium azide Constituents: 1% BSA, 98% PBS</p>
Purity	Immunogen affinity purified
Clonality	Polyclonal
Isotype	IgG

Applications

Our [Abpromise guarantee](#) covers the use of **ab197158** in the following tested applications.

The application notes include recommended starting dilutions; optimal dilutions/concentrations should be determined by the end user.

Application	Abreviews	Notes
IHC-P		1/100 - 1/500.
WB		1/200 - 1/1000. Predicted molecular weight: 34 kDa.

Target

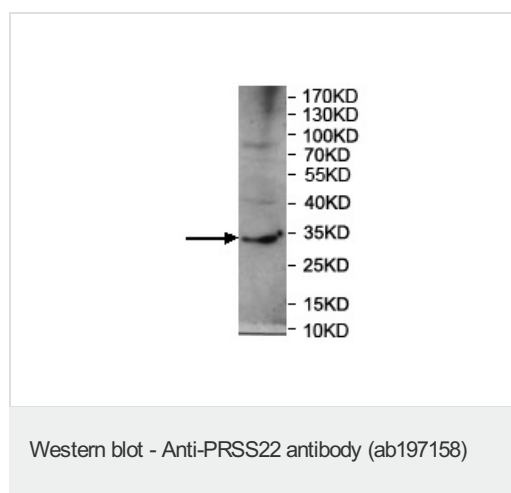
Relevance

PRSS22 is a member of the trypsin family of serine proteases. The enzyme is expressed in the airways in a developmentally regulated manner. It preferentially cleaves the synthetic substrate H-D-Leu-Thr-Arg-pNA compared to tosyl-Gly-Pro-Arg-pNA.

Cellular localization

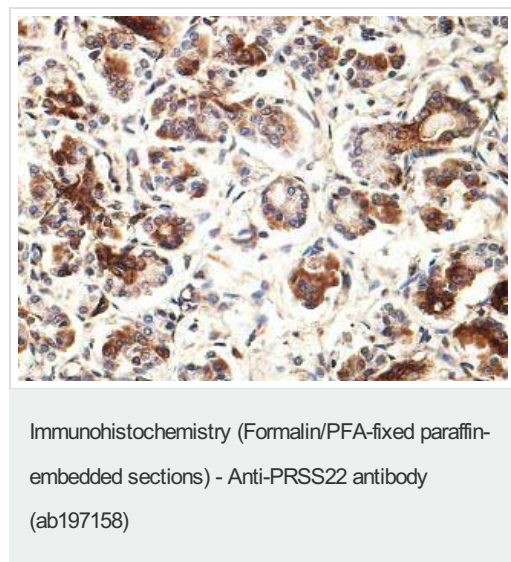
Secreted

Images



Anti-PRSS22 antibody (ab197158) at 1/1000 dilution + Human fetal lung lysate

Predicted band size: 34 kDa



Immunohistochemical analysis of formalin-fixed, paraffin-embedded Human fetal pancreas tissue labeling PRSS22 with ab197158 at 1/100 dilution.

Please note: All products are "FOR RESEARCH USE ONLY. NOT FOR USE IN DIAGNOSTIC PROCEDURES"

Our Abpromise to you: Quality guaranteed and expert technical support

- Replacement or refund for products not performing as stated on the datasheet
- Valid for 12 months from date of delivery
- Response to your inquiry within 24 hours
- We provide support in Chinese, English, French, German, Japanese and Spanish
- Extensive multi-media technical resources to help you
- We investigate all quality concerns to ensure our products perform to the highest standards

If the product does not perform as described on this datasheet, we will offer a refund or replacement. For full details of the Abpromise, please visit <https://www.abcam.com/abpromise> or contact our technical team.

Terms and conditions

- Guarantee only valid for products bought direct from Abcam or one of our authorized distributors