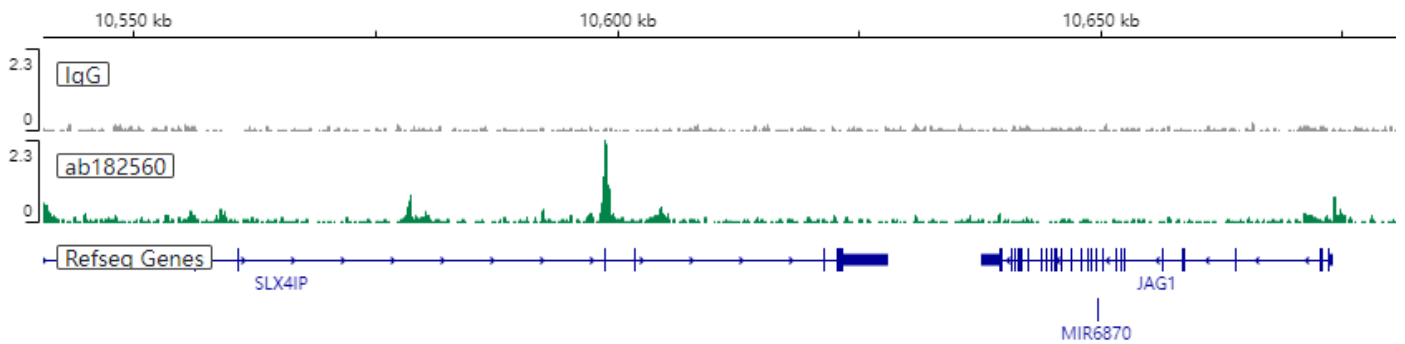


## Anti-ARID1A antibody [EPR13501] - (ab182560)

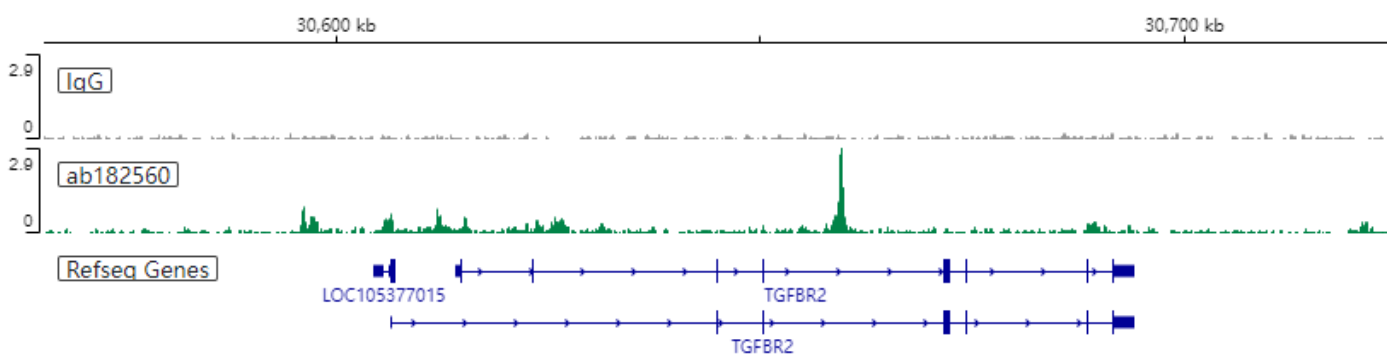
Application	ChIC/CUT&RUN-seq
Target	ARID1A
Sample	HCT116
Treatment	None
Antibody amount	5µg
Cell number	2.5X10 <sup>5</sup>
Sequencing	NovaSeq 6000 (PE150)
Peak calling	MACS 2.1.0
Reference genome	hg38
Reads	10 million

### Chromosome 20



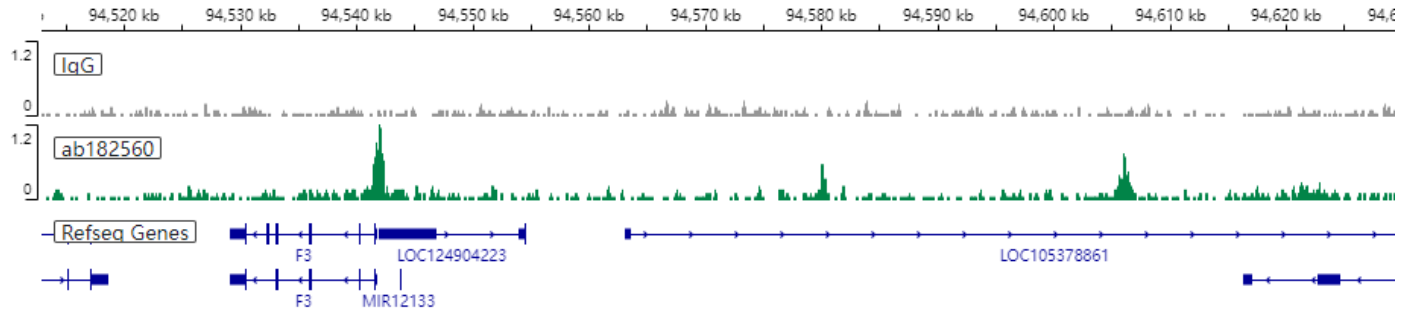
Copyright (c) 2023 Abcam plc.

### Chromosome 3



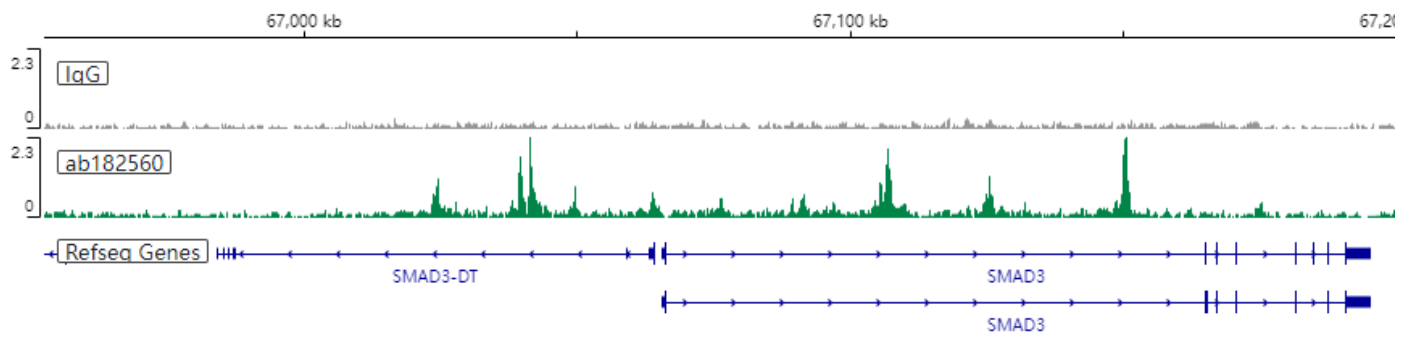
Copyright (c) 2023 Abcam plc.

### Chromosome 1



Copyright (c) 2023 Abcam plc.

### Chromosome 15



Copyright (c) 2023 Abcam plc.