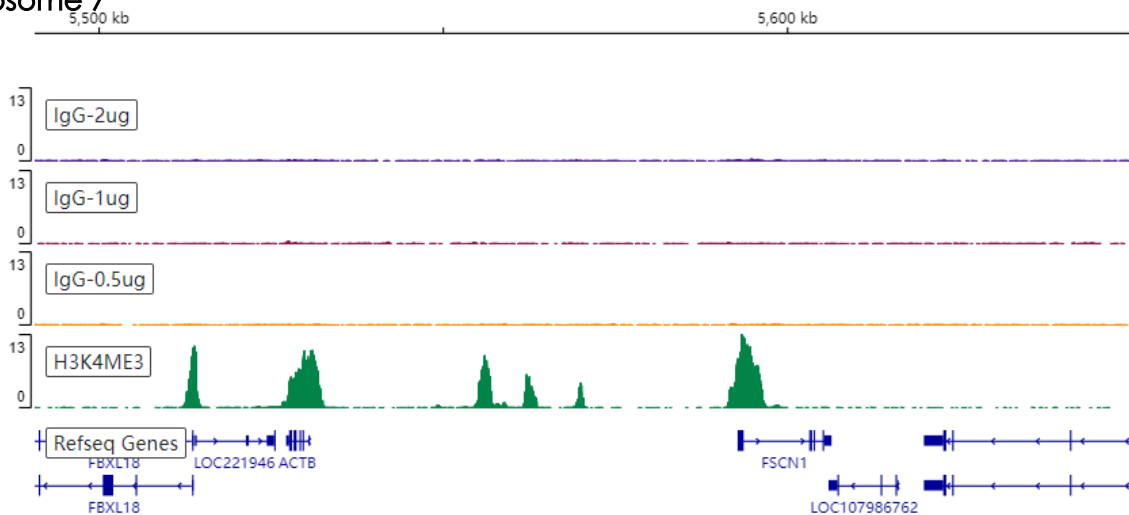


Recombinant Rabbit IgG, monoclonal [EPR25A] - Isotype Control (ab172730)

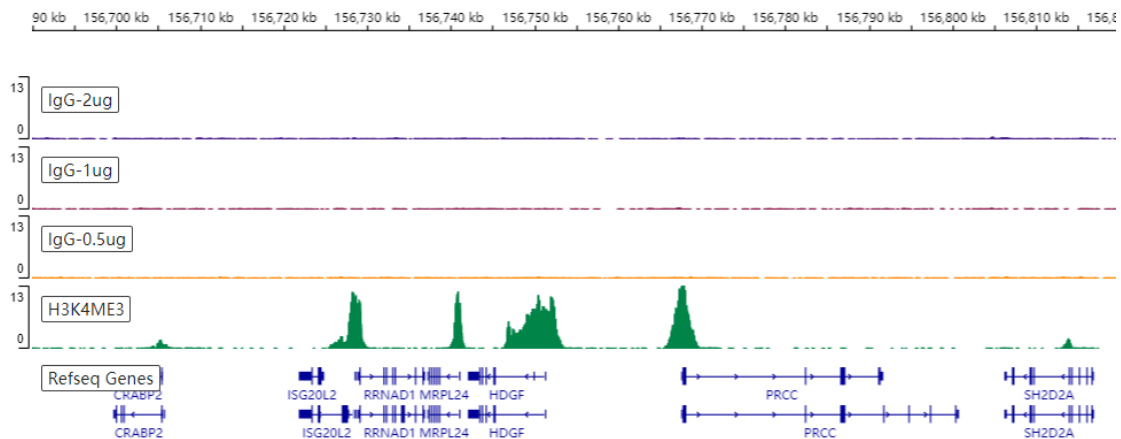
|                  |                       |
|------------------|-----------------------|
| Target           | Rabbit IgG            |
| Sample           | HeLa                  |
| Treatment        | None                  |
| Antibody amount  | 0.5ug/1ug/2ug         |
| Cell number      | 10 <sup>5</sup>       |
| Sequencing       | NovaSeq 6000 (PE 150) |
| Peak calling     | MACS 2.1.0            |
| Reference genome | hg38                  |

Chromosome 7



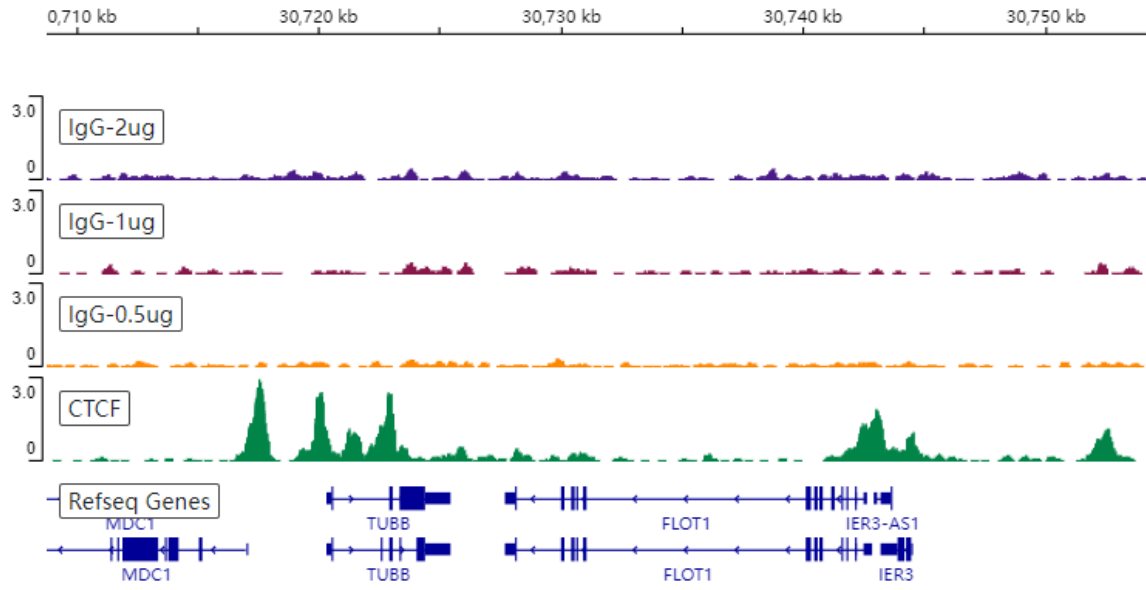
Copyright (c) 2021 Abcam plc.

Chromosome 1



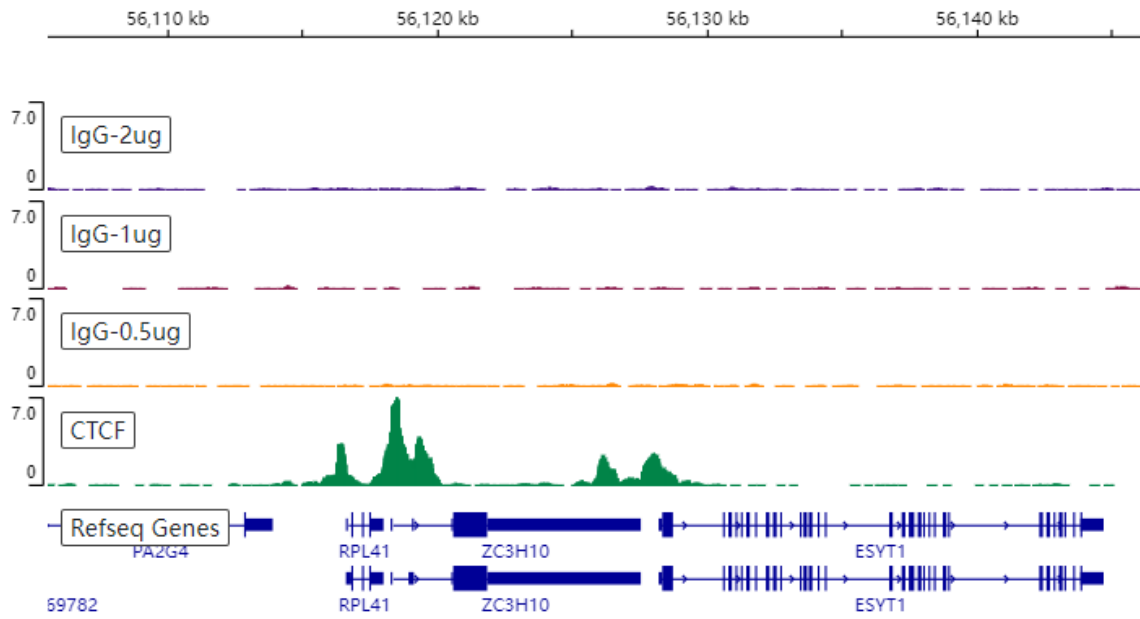
Copyright (c) 2021 Abcam plc.

## Chromosome 6



Copyright (c) 2021 Abcam plc.

## Chromosome 7



Copyright (c) 2021 Abcam plc.