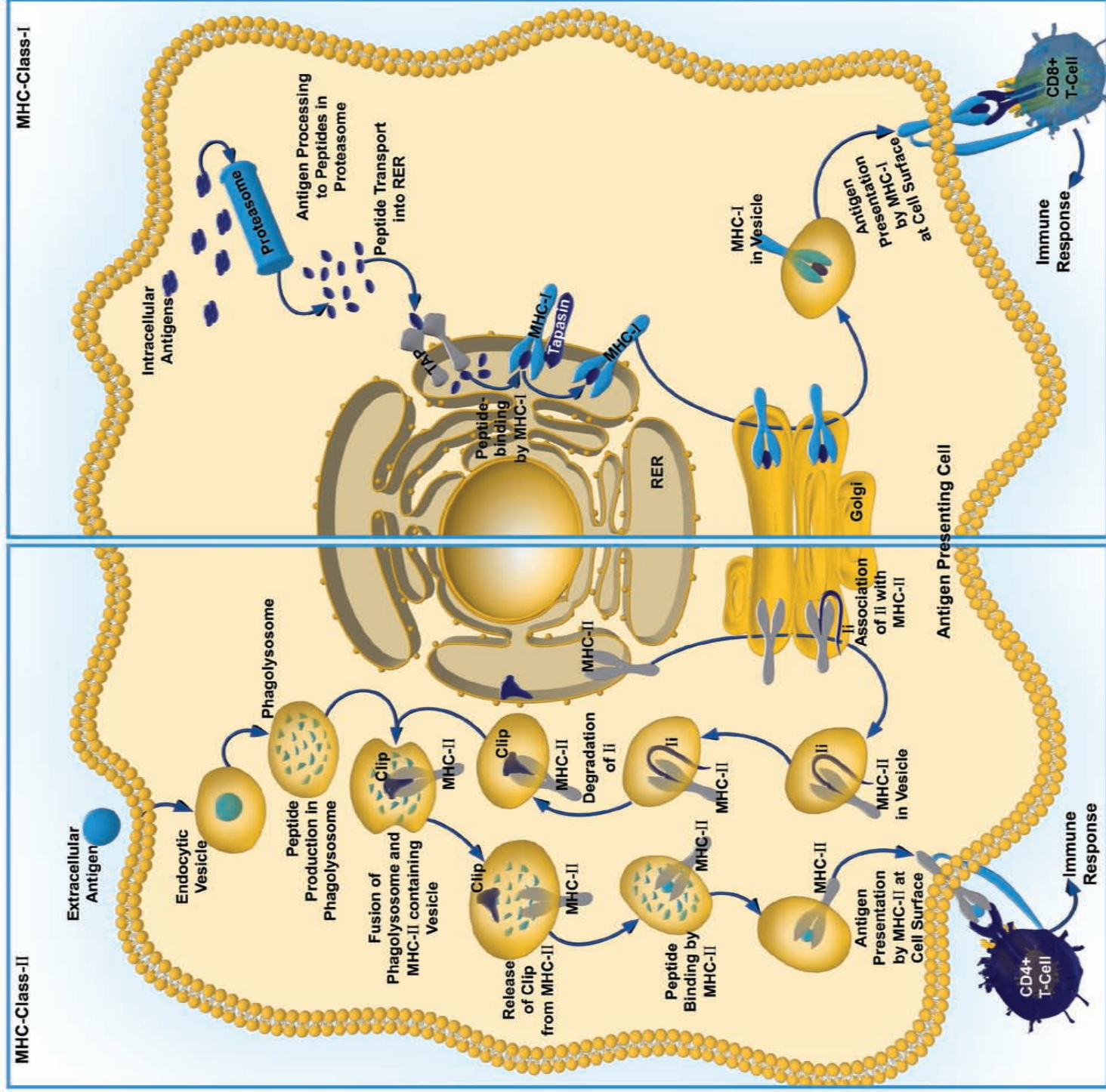


# Antigen Processing and Presentation by MHCs



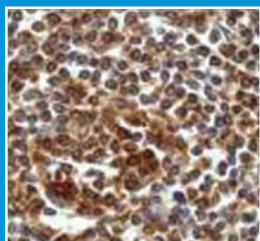
## MHC antibodies from Abcam:

See more products at: [www.abcam.com](http://www.abcam.com)

Product	Clonality	Applications	Host	Species Reactivity	Datasheet <a href="http://www.abcam.com/ab...">www.abcam.com/ab...</a>
MHC class I	P	Flow Cyt, ICC/IF, IHC-P, WB	Rb	Hu	52749
MHC class I [CVS 22]	M	Flow Cyt	Mm	Horse	23491
MHC class I [EP1395Y]	M	Flow Cyt, ICC/IF, IHC-P, IP, WB	Rb	Hu, Mm and Rt	52922
MHC class I [F21-2] (Biotin)	M	AP, Flow Cyt, IHC-Fr, IP, WB	Mm	Ch	25159
MHC class I [OX18]	M	Flow Cyt	Mm	Rt	6405
MHC Class I alpha [KSK 001-03]	M	AP, Flow Cyt, IP, WB	Mm	Ch	23483
MHC Class I alpha + beta [6D4]	M	Flow Cyt, IHC-Fr, IP	Mm	Hu	54413
MHC Class I H2 Db [27-11-13] - BSA and Azide free					
	M	Flow Cyt, IHC-Fr	Mm	Mm	25244
MHC Class I H2 Db [28-14-8]	M	Flow Cyt, IHC-Fr	Mm	Mm	25228
MHC Class I H2 Db [28-14-8] (Biotin)	M	Flow Cyt, IHC-Fr	Mm	Mm	25237
MHC Class I H2 Db [28-14-8] (FITC)	M	Flow Cyt	Mm	Mm	25056
MHC Class I H2 Db [28-14-8] (PE)	M	Flow Cyt, IHC-Fr	Mm	Mm	25588
MHC Class I H2 Dd [D1]	M	Cytotox, Flow Cyt	Mm	Mm	22571
MHC Class I H2 Kb [CTKb] (FITC)	M	Flow Cyt	Mm	Mm	34318
MHC Class I H2 Kd [34-1-2S]	M	Flow Cyt, IHC-Fr	Mm	Mm	25334
MHC Class I H2 Kk [36-7-5]	M	Flow Cyt, IHC-Fr	Mm	Mm	25338
MHC class I RT Ia [OX-18]	M	ELISA, Flow Cyt, IHC-Fr, IP	Mm	Rt	33752
MHC Class II [2G11]					
	M	Flow Cyt, IP, WB	Mm	Ch	25361
MHC Class II [3D6]	M	Flow Cyt, IF, IHC-Fr, IP, WB	Mm	Rt	8351
MHC Class II [CVS20]	M	Flow Cyt, IHC-Fr	Mm	Hu, Cow, Dog and Hr	23206
MHC Class II [MRC OX-6]	M	Flow Cyt, IHC-Fr, IHC-P, WB	Mm	Mm and Rt	23990

Product	Clonality	Applications	Host	Species Reactivity	Datasheet <a href="http://www.abcam.com/ab...">www.abcam.com/ab...</a>
MHC Class II [NIMR-4] (Biotin)	M	Flow Cyt	Rt	Mm	25207
MHC Class II [NIMR-4] (FITC)	M	Flow Cyt	Rt	Mm	25259
MHC Class II [NIMR-4] (PE/Cy5)	M	Flow Cyt	Rt	Mm	25256
MHC Class II [NIMR-4] (PE)	M	Flow Cyt	Rt	Mm	24842
MHC Class II beta [KSK 001-02]					
	M	AP, Flow Cyt, IHC-FoFr, IP, WB	Mm	Ch	23488
MHC Class II I Ab + Ad [IA-C6]	M	Flow Cyt, IP	Mm	Mm	40971
MHC Class II I Ab [IA-E6]	M	Flow Cyt, IP	Mm	Mm	40972
MHC Class II I Ak + d + b + q + r [ER-TR3]					
	M	Flow Cyt, IHC-Fr	Mm	Mm	59741
MHC Class II I Ak + d + q + r [ER-TR1]	M	Flow Cyt, IHC-Fr	Rt	Mm	60074
MHC Class II I Ak + s + r [ER-TR2]	M	Flow Cyt, IHC-Fr	Rt	Mm	60075
MHC Class II I Ak [IA-G3]	M	Flow Cyt, IP	Mm	Mm	40970
MHC Class II I E [C3A3-Do3]					
	M	Flow Cyt, WB	Mm	Mm and Rt	24262
MHC class II I E kappa [14-4-4S]	M	BL, Flow Cyt, IHC-Fr, IP	Mm	Mm	25681
MHC Class II Ia [OX4]	M	ELISA, Flow Cyt, IHC-Fr	Mm	Hu and Mm	6402
MHC Class II Ia [OX6]	M	Flow Cyt, ICC/IF, IHC-FoFr, IHC-Fr, IHC-P	Mm	Mm and Rt	6403
MHC class II RT Ib [OX-6]	M	Flow Cyt, IHC-Fr, IHC-P	Mm	Mm and Rt	34357
MHC class II RT Ib [OX-6] (Phycoerythrin)					
	M	Flow Cyt	Mm	Mm	34358
MHC class II	M	IHC-P WB	Mm	Hu	55152

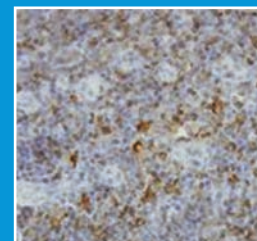
Many more available at [www.abcam.com/MHC](http://www.abcam.com/MHC)



### MHC class I antibody (ab52749)

Clonality	Applications	Host	Species cross reactivity
P	Flow cyt, ICC/IF, IHC-P, WB	Rb	Hu

MHC Class I molecules play a central role in the immune system by presenting peptides derived from the endoplasmic reticulum lumen. The antigen is expressed by all somatic cells at varying levels and most nucleated cells where they present endogenously synthesized antigenic peptides to CD8+ T lymphocytes. This image shows MHC I staining in paraffin-embedded human spleen, using ab52749.



### MHC class II antibody (ab55152)

Clonality	Applications	Host	Species cross reactivity
M	IHC-P, WB	Mm	Hu

MHC Class II antigens are a valuable tool for studying T helper cell interaction with class II positive antigen presenting cells such as dendritic cells, B cells and macrophages and offer the possibility of studying the development of T helper cells since the antigen is present on stromal cells in the thymus. MHC Class II antigens are also inducible on endothelial and epithelial cells by interferon gamma. This image shows MHC class II expressing cells in formalin fixed and paraffin embedded human lymph node, using ab55152.

