

Version 3c Last updated 16 October 2020

ab238537 MDA Assay Kit (competitive ELISA)

For the quantitative measurement of MDA in protein samples such as purified protein, plasma, serum and cell lysate.

This product is for research use only and is not intended for diagnostic use.

Table of Contents

1. Overview	3
2. Protocol Summary	4
3. General guidelines, precautions, and troubleshooting	5
4. Materials Supplied, and Storage and Stability	6
5. Materials Required, Not Supplied	7
6. Reagent Preparation	8
7. Standard Preparation	9
8. Sample Preparation	10
9. Assay Procedure	11
10. Data Analysis	12
11. Typical Data	13
12. Species Reactivity	14
13. Notes	15

1. Overview

MDA Assay Kit (competitive ELISA) (ab238537) is designed for the rapid detection and quantitation of Malondialdehyde (MDA)-protein adducts.

MDA is a widely accepted marker for oxidative stress. This kit will allow the quantitation of MDA adduct in protein samples determined by comparing its absorbance with that of a known MDA-BSA standard curve.

2. Protocol Summary

Prepare all reagents, samples, and standards as instructed.



Add 50 μ L standard or sample to wells of MDA Conjugate coated plate and incubate for 10 mins. Add 50 μ L of the diluted anti-MDA antibody and incubate for 1 h.



Washing steps with 250 μ L 1X Wash Buffer.



Add 100 μ L diluted Secondary Antibody-HRP Conjugate per well and incubate for 1 h. Wash as before with 1X Wash buffer.



Add 100 μ L of warm Substrate Solution and incubate for 2-20 mins.



Stop the enzyme reaction by adding 100 μ L of Stop Solution to each well. Read absorbance immediately on a microplate reader using 450 nm.

3. General guidelines, precautions, and troubleshooting

- Please observe safe laboratory practice and consult the safety datasheet.
- For general guidelines, precautions, limitations on the use of our assay kits and general assay troubleshooting tips, particularly for first time users, please consult our guide:
www.abcam.com/assaykitguidelines
- For typical data produced using the assay, please see the assay kit datasheet on our website.

4. Materials Supplied, and Storage and Stability

- Store kit at +4°C immediately upon receipt and check below for storage for individual components. Kit can be stored for 1 year from receipt, if components have not been reconstituted.
- Aliquot components in working volumes before storing at the recommended temperature.
- Avoid repeated freeze-thaws of reagents.

Item	Quantity	Storage condition
Protein Binding Strip Well Plate	96 well	+4°C
Anti-MDA Antibody (1000X)	10 µL	-20°C
Secondary Antibody, HRP Conjugate (1000X)	20 µL	+4°C
Assay Diluent	50 mL	+4°C
10X Wash Buffer	100 mL	+4°C
Substrate Solution	12 mL	+4°C
Stop Solution	12 mL	+4°C
MDA-BSA Standard	50 µL	-20°C
MDA Conjugate	20 µL	-20°C
100X Conjugate Diluent	300 µL	-20°C

5. Materials Required, Not Supplied

These materials are not included in the kit, but will be required to successfully perform this assay:

- Microplate reader capable of measuring absorbance at O.D. 450 nm (620 nm as optional reference wave length)
- Protein samples such as purified protein, plasma, serum, cell lysate
- 1X PBS
- 10 μ L to 1000 μ L adjustable single channel micropipettes with disposable tips
- 50 μ L to 300 μ L adjustable multichannel micropipette with disposable tips
- Multichannel micropipette reservoir

6. Reagent Preparation

- Equilibrate all reagents to room temperature (18-25°C) prior to use. Before using the kit, spin tubes and bring down all components to the bottom of tubes.
- Prepare only as much reagent as is needed on the day of the experiment.
- Any components not listed here are ready to use as supplied.

6.1 MDA Conjugate Coated Plate

Δ Note: The MDA Conjugate coated wells are not stable and should be used within 24 hrs after coating. Only coat the number of wells to be used immediately.

- 6.1.1 Immediately before use, prepare 1X Conjugate Diluent by diluting the 100X Conjugate Diluent in 1X PBS. Example: Add 100 μ L to 9.9 mL of 1X PBS.
- 6.1.2 Immediately before use, prepare 500 ng/mL of MDA Conjugate by diluting the 1.0 mg/mL MDA Conjugate in 1X Conjugate Diluent. Example: Add 5 μ L of 1.0 mg/mL MDA Conjugate to 9.995 mL of 1X Conjugate Diluent and mix well.
- 6.1.3 Add 100 μ L of the 500 ng/mL MDA Conjugate to each well and incubate overnight at 4°C.
- 6.1.4 Remove the MDA Conjugate coating solution and wash twice with 1X PBS. Blot plate on paper towels to remove excess fluid.
- 6.1.5 Add 200 μ L of Assay Diluent to each well and block for 1 hr at room temperature. Transfer the plate to 4°C and remove the Assay Diluent immediately before use.

6.2 1X Wash Buffer:

- 6.2.1 Dilute the 10X Wash Buffer Concentrate to 1X with deionized water.
- 6.2.2 Stir to homogeneity.

6.3 Anti-MDA Antibody and Secondary Antibody

- 6.3.1 Immediately before use dilute the Anti-DNPH antibody 1:1000 and Secondary Antibody 1:1000 with Assay Diluent.
- 6.3.2 Do not store diluted solutions.

7. Standard Preparation

- Always prepare a fresh set of standards for every use.
- Discard working standard dilutions after use as they do not store well.

7.1 Prepare a dilution series of MDA-BSA standards in the concentration range of 0 to 6.25 µg/mL by diluting the MDA-BSA Standard in Assay Diluent as per the table below.

Standard #	1 mg/mL MDA-BSA Standard (µL)	Assay Diluent (µL)	MDA-BSA (µg/mL)	MDA Adduct (pmol/mL)
1	5	795	6.25	1500
2	200 of standard #1	200	3.13	750
3	200 of standard #2	200	1.56	375
4	200 of standard #3	200	0.78	188
5	200 of standard #4	200	0.39	94
6	200 of standard #5	200	0.20	47
7	200 of standard #6	200	0.10	24
8	200 of standard #7	200	0.05	12
9	200 of standard #8	200	0.025	6
10	0	200	0	0

8. Sample Preparation

General sample information:

- We recommend performing several dilutions of your sample to ensure the readings are within the standard value range.
- We recommend that you use fresh samples for the most reproducible assay.
- If you cannot perform the assay at the same time, we suggest that you snap freeze your samples in liquid nitrogen upon extraction and store them immediately at -80°C . Be aware, however, that the MDA modification, is not very stable, and can begin to degrade after 1 month of storage at -80°C .

9. Assay Procedure

- Equilibrate all materials and prepared reagents to room temperature prior to use.
 - We recommend that you assay all standards, controls and samples in duplicate.
- 9.1 Add 50 μL of unknown sample or MDA-BSA standard to the wells of the MDA Conjugate coated plate. If needed, unknown samples may be diluted in 1X PBS containing 0.1% BSA before adding. Incubate at room temperature for 10 mins on an orbital shaker.
 - 9.2 Add 50 μL of the diluted anti-MDA antibody to each well, incubate at room temperature for 1 h on an orbital shaker.
 - 9.3 Wash 3 times with 250 μL of 1X Wash Buffer with thorough aspiration between each wash. After the last wash, empty wells and tap microwell strips on absorbent pad or paper towel to remove excess 1X Wash Buffer.
 - 9.4 Add 100 μL of the diluted Secondary Antibody-HRP Conjugate to all wells and incubate for 1 h at room temperature on an orbital shaker. Wash the strip wells 3 times according to step 9.3 above.
 - 9.5 Warm Substrate Solution to room temperature. Add 100 μL of Substrate Solution to each well. Incubate at room temperature for 2-20 mins on an orbital shaker.
- Δ Note:** Watch plate carefully; if color changes rapidly, the reaction may need to be stopped sooner to prevent saturation.
- 9.6 Stop the enzyme reaction by adding 100 μL of Stop Solution to each well. Results should be read immediately (color will fade over time).
 - 9.7 Read absorbance of each well on a microplate reader using 450 nm as the primary wave length.

10. Data Analysis

Samples producing signals greater than that of the highest standard should be further diluted in appropriate buffer and reanalyzed, then multiply the concentration found by the appropriate dilution factor.

- 10.1 Average the duplicate reading for each standard, control and sample.
- 10.2 Plot the values for each standard and draw the smooth curve through these plots to construct the standard curve. Most plate reader software or Excel can plot these values and curve fit. Calculate the trendline equation based on your standard curve data (use the equation that provides the most accurate fit).
- 10.3 Apply the corrected sample OD reading to the standard curve to get MDA Adduct amount in the sample wells.
- 10.4 Concentration of MDA Adduct in pmol/ml in the test samples is calculated as:

$$\text{MDA Adduct concentration} = B * D$$

Where:

B = amount of MDA Adduct in the sample well calculated from standard curve in pmol/ml

D = sample dilution factor if sample is diluted to fit within the standard curve range (prior to reaction well set up).

11. Typical Data

Typical standard curve - data provided **for demonstration purposes only**. A new standard curve must be generated for each assay performed.

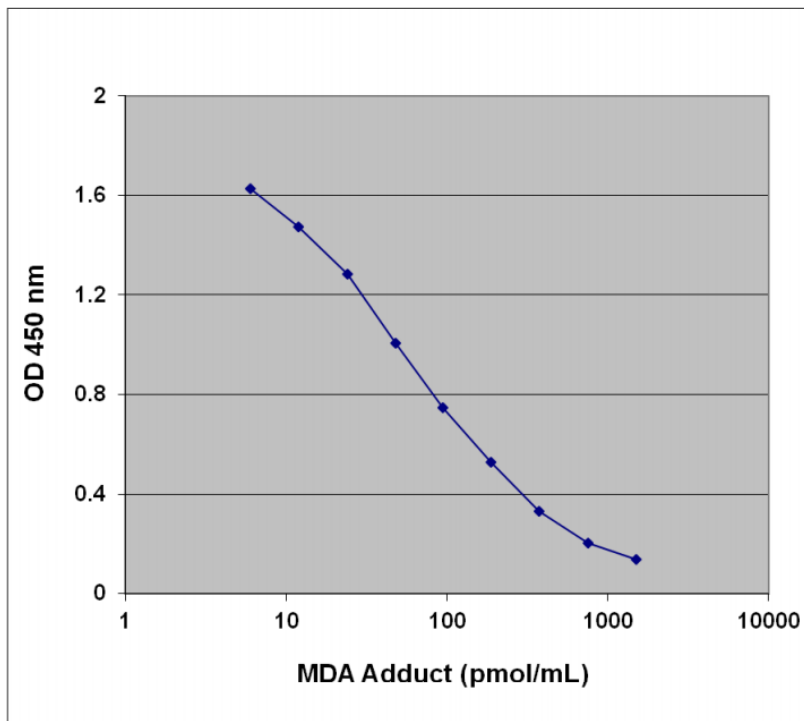


Figure 1. Typical Standard Curve: This standard curve is for demonstration only. A standard curve must be run with each assay.

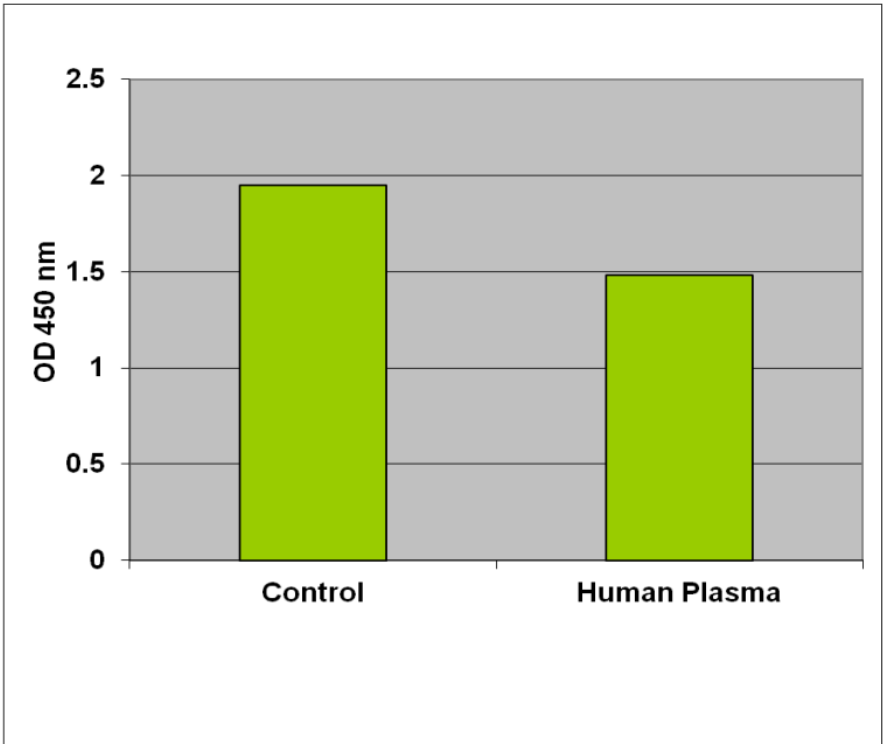


Figure 2. MDA Protein Adduct in Human Plasma. MDA levels were assayed in the blank (no MDA, left) and in undiluted human plasma (right).

12. Species Reactivity

This kit is not species specific and can be used with samples from any species.

Please contact our Technical Support team for more information.

13. Notes

Technical Support

Copyright © 2020 Abcam. All Rights Reserved. The Abcam logo is a registered trademark. All information / detail is correct at time of going to print.

For all technical or commercial enquiries please go to:

www.abcam.com/contactus

www.abcam.cn/contactus (China)

www.abcam.co.jp/contactus (Japan)