

Version 2 Last updated 29 October 2021

ab273617 Human Tau SimpleStep ELISA[®] Kit

For the quantitative measurement of Tau in human serum, plasma, cerebrospinal fluid, cell culture supernatant, cell and tissue extracts.

This product is for research use only and is not intended for diagnostic use.

Table of Contents

1. Overview	1
2. Protocol Summary	2
3. Precautions	3
4. Storage and Stability	3
5. Limitations	4
6. Materials Supplied	4
7. Materials Required, Not Supplied	5
8. Technical Hints	5
9. Reagent Preparation	7
10. Standard Preparation	8
11. Sample Preparation	9
12. Plate Preparation	12
13. Assay Procedure	13
14. Calculations	15
15. Typical Data	16
16. Typical Sample Values	18
17. Assay Specificity	22
18. Species Reactivity	23
19. Troubleshooting	24
20. Notes	25
Technical Support	26

1. Overview

Tau *in vitro* SimpleStep ELISA® (Enzyme-Linked Immunosorbent Assay) kit is designed for the quantitative measurement of Tau protein in human serum, plasma, cerebrospinal fluid, cell culture supernatant, cell and tissue extracts.

The SimpleStep ELISA® employs an affinity tag labeled capture antibody and a reporter conjugated detector antibody which immunocapture the sample analyte in solution. This entire complex (capture antibody/analyte/detector antibody) is in turn immobilized via immunoaffinity of an anti-tag antibody coating the well. To perform the assay, samples or standards are added to the wells, followed by the antibody mix. After incubation, the wells are washed to remove unbound material. TMB Development Solution is added and during incubation is catalyzed by HRP, generating blue coloration. This reaction is then stopped by addition of Stop Solution completing any color change from blue to yellow. Signal is generated proportionally to the amount of bound analyte and the intensity is measured at 450 nm. Optionally, instead of the endpoint reading, development of TMB can be recorded kinetically at 600 nm.

Tau proteins constitute nine isoforms from a single transcript from the MAPT gene that range from 33-81 kDa. Tau proteins are expressed mainly in the neurons of the central nervous systems. They promote microtubule assembly and stability and might be involved in the establishment and maintenance of neuronal polarity. The C-terminus of Tau binds axonal microtubules while the N-terminus binds neural plasma membrane components, suggesting that Tau functions as a linker protein between both. Hyperphosphorylation of Tau proteins can result in destabilization of microtubule organization, Tau aggregation, and tangle formation. Defective Tau proteins may play a role in diseases of the nervous systems, including Alzheimer disease, Pick disease of the brain, Progressive supranuclear palsy 1 and Parkinson-dementia syndrome. Based on the immunogen design of this ELISA antibody pair, this kit should detect all nine human Tau isoforms and it should have equal affinity towards human, mouse and rat Tau proteins.

2. Protocol Summary

Prepare all reagents, samples, and standards as instructed



Add 50 μ L standard or sample to appropriate wells



Add 50 μ L Antibody Cocktail to all wells



Incubate at room temperature for 1 hour



Aspirate and wash each well three times with 350 μ L 1X Wash Buffer
PT



Add 100 μ L TMB Development Solution to each well and incubate
for 10 minutes.



Add 100 μ L Stop Solution and read OD at 450 nm

3. Precautions

Please read these instructions carefully prior to beginning the assay.

- All kit components have been formulated and quality control tested to function successfully as a kit.
- We understand that, occasionally, experimental protocols might need to be modified to meet unique experimental circumstances. However, we cannot guarantee the performance of the product outside the conditions detailed in this protocol booklet.
- Reagents should be treated as possible mutagens and should be handled with care and disposed of properly. Please review the Safety Datasheet (SDS) provided with the product for information on the specific components.
- Observe good laboratory practices. Gloves, lab coat, and protective eyewear should always be worn. Never pipet by mouth. Do not eat, drink or smoke in the laboratory areas.
- All biological materials should be treated as potentially hazardous and handled as such. They should be disposed of in accordance with established safety procedures.

4. Storage and Stability

Store kit at +4°C immediately upon receipt. Kit has a storage time of 1 year from receipt, providing components have not been reconstituted.

Refer to list of materials supplied for storage conditions of individual components.

5. Limitations

- Assay kit intended for research use only. Not for use in diagnostic procedures.
- Do not mix or substitute reagents or materials from other kit lots or vendors. Kits are QC tested as a set of components and performance cannot be guaranteed if utilized separately or substituted.

6. Materials Supplied

Item	Quantity	Storage Condition
Human Tau Capture Antibody 10X	600 µL	+4°C
Human Tau Detector Antibody 10X	600 µL	+4°C
Human Tau Lyophilized Recombinant Protein	2 Vials	+4°C
Antibody Diluent 5BI	6 mL	+4°C
Cell Extraction Buffer PTR 5X	10 mL	+4°C
Sample Diluent NS	50 mL	+4°C
Wash Buffer PT 10X	20 mL	+4°C
TMB Development Solution	12 mL	+4°C
Stop Solution	12 mL	+4°C
SimpleStep Pre-Coated 96-Well Microplate	96 Wells	+4°C
Plate Seal	1	+4°C

7. Materials Required, Not Supplied

These materials are not included in the kit, but will be required to successfully perform this assay:

- Microplate reader capable of measuring absorbance at 450 or 600 nm.
- Method for determining protein concentration (BCA assay recommended).
- Deionized water.
- Multi- and single-channel pipettes.
- Tubes for standard dilution.
- Plate shaker for all incubation steps.
- Optional: Phenylmethylsulfonyl Fluoride (PMSF) (or other protease inhibitors).

8. Technical Hints

- Samples generating values higher than the highest standard should be further diluted in the appropriate sample dilution buffers.
- Avoid foaming or bubbles when mixing or reconstituting components.
- Avoid cross contamination of samples or reagents by changing tips between sample, standard and reagent additions.
- Ensure plates are properly sealed or covered during incubation steps.
- Complete removal of all solutions and buffers during wash steps is necessary to minimize background.
- As a guide, typical ranges of sample concentration for commonly used sample types are shown below in Sample Preparation (section 11).
- All samples should be mixed thoroughly and gently.
- Avoid multiple freeze/thaw of samples.
- Incubate ELISA plates on a plate shaker during all incubation steps.
- When generating positive control samples, it is advisable to change pipette tips after each step.

- To avoid high background always add samples or standards to the well before the addition of the antibody cocktail.
- This kit is sold based on number of tests. A 'test' simply refers to a single assay well. The number of wells that contain sample, control or standard will vary by product. Review the protocol completely to confirm this kit meets your requirements. Please contact our Technical Support staff with any questions.

9. Reagent Preparation

- Equilibrate all reagents to room temperature (18-25°C) prior to use. The kit contains enough reagents for 96 wells. The sample volumes below are sufficient for 48 wells (6 x 8-well strips); adjust volumes as needed for the number of strips in your experiment.
- Prepare only as much reagent as is needed on the day of the experiment. Capture and Detector Antibodies have only been tested for stability in the provided 10X formulations.

9.1 1X Cell Extraction Buffer PTR (For cell and tissue extracts only):

Prepare 1X Cell Extraction Buffer PTR by diluting Cell Extraction Buffer PTR 5X to 1X with deionized water. To make 10 mL 1X Cell Extraction Buffer PTR combine 8 mL deionized water and 2 mL Cell Extraction Buffer PTR 5X. Mix thoroughly and gently. If required protease inhibitors can be added.

9.2 1X Wash Buffer PT:

Prepare 1X Wash Buffer PT by diluting Wash Buffer PT 10X with deionized water. To make 50 mL 1X Wash Buffer PT combine 5 mL Wash Buffer PT 10X with 45 mL deionized water. Mix thoroughly and gently.

9.3 Antibody Cocktail:

Prepare Antibody Cocktail by diluting the capture and detector antibodies in Antibody Diluent 5BI. To make 3 mL of the Antibody Cocktail combine 300 μ L 10X Capture Antibody and 300 μ L 10X Detector Antibody with 2.4 mL Antibody Diluent 5BI. Mix thoroughly and gently.

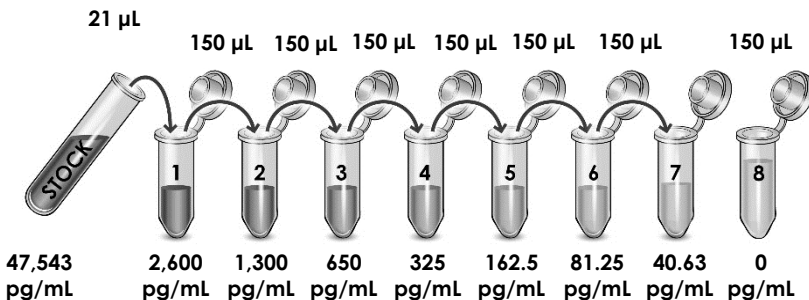
10. Standard Preparation

- Always prepare a fresh set of standards for every use.
- Discard working standard dilutions after use as they do not store well.
- The following section describes the preparation of a standard curve for duplicate measurements (recommended).

The standard of this kit is human Tau-A isoform (P10636-3).

10.1 IMPORTANT: If the protein standard vial has a volume identified on the label, reconstitute the Tau by adding that volume of Diluent indicated on the label. Alternatively, if the vial has a mass identified, reconstitute the Tau standard by adding 500 μL Diluent. Hold at room temperature for 10 minutes and mix gently. This is the 47,543 pg/mL **Stock Standard** Solution. For **serum, plasma, cerebrospinal fluid, cell culture supernatant samples measurements**, reconstitute the Tau protein standard by adding Sample Diluent NS. For **cell and tissue extracts samples measurements**, reconstitute the Tau protein standard by adding 1X Cell Extraction Buffer PTR.

- 10.1.1 Label eight tubes, Standards 1–8.
- 10.1.2 Add 363 μL of appropriate diluent (see step 10.1) into tube number 1 and 150 μL of appropriate diluent into numbers 2-8.
- 10.1.3 Use the Stock Standard to prepare the following dilution series. Standard #8 contains no protein and is the Blank control:



11. Sample Preparation

Typical Sample Dynamic Range	
Sample Type	Range
Serum*	≤50%
Plasma – EDTA*	≤25%
Plasma – Heparin*	≤25%
Cell Culture Media*	≤50%
Cerebrospinal Fluid*	≤50%
SH-SY5Y Mock Treated Cell Extract	1-80 ug/mL
SH-SY5Y Staurosporine Treated Cell Extract	1-80 ug/mL
Human Brain Tissue Extract	0.1-3.5 ug/mL

*Based on spiked sample

11.1 Plasma:

Collect plasma using EDTA or heparin. Centrifuge samples at 2,000 x g for 10 minutes. Dilute samples at least 1:4 into Sample Diluent NS and assay. Store un-diluted plasma samples at -20°C or below for up to 3 months. Avoid repeated freeze-thaw cycles.

11.2 Serum:

Samples should be collected into a serum separator tube. After clot formation, centrifuge samples at 2,000 x g for 10 minutes and collect serum. Dilute samples at least 1:2 into Sample Diluent NS and assay. Store un-diluted serum at -20°C or below. Avoid repeated freeze-thaw cycles.

11.3 Cell Culture Supernatants:

Centrifuge cell culture media at 2,000 x g for 10 minutes to remove debris. Collect supernatants. Dilute samples at least 1:2 into Sample Diluent NS and assay. Store un-diluted samples at -20°C or below. Avoid repeated freeze-thaw cycles.

11.4 Cerebrospinal Fluid (CSF)

Dilute cerebrospinal fluid at least 1:2 into Sample Diluent NS and assay. Store un-diluted samples at -20°C or below. Avoid repeated freeze-thaw cycles.

11.5 Preparation of extracts from cell pellets:

- 11.5.1 Collect non-adherent cells by centrifugation or scrape to collect adherent cells from the culture flask. Typical centrifugation conditions for cells are 500 x g for 5 minutes at 4°C.
- 11.5.2 Rinse cells twice with PBS.
- 11.5.3 Solubilize pellet at 2×10^7 cell/mL in chilled 1X Cell Extraction Buffer PTR.
- 11.5.4 Incubate on ice for 20 minutes.
- 11.5.5 Centrifuge at 18,000 x g for 20 minutes at 4°C.
- 11.5.6 Transfer the supernatants into clean tubes and discard the pellets.
- 11.5.7 Assay samples immediately or aliquot and store at -80°C. The sample protein concentration in the extract may be quantified using a protein assay.
- 11.5.8 Dilute samples to desired concentration in 1X Cell Extraction Buffer PTR.

11.6 Preparation of extracts from adherent cells by direct lysis (alternative protocol):

- 11.6.1 Remove growth media and rinse adherent cells 2 times in PBS.
- 11.6.2 Solubilize the cells by addition of chilled 1X Cell Extraction Buffer PTR directly to the plate (use 750 μ L - 1.5 mL 1X Cell Extraction Buffer PTR per confluent 15 cm diameter plate).
- 11.6.3 Scrape the cells into a microfuge tube and incubate the lysate on ice for 15 minutes.
- 11.6.4 Centrifuge at 18,000 x g for 20 minutes at 4°C.
- 11.6.5 Transfer the supernatants into clean tubes and discard the pellets.
- 11.6.6 Assay samples immediately or aliquot and store at -80°C. The sample protein concentration in the extract may be quantified using a protein assay.
- 11.6.7 Dilute samples to desired concentration in 1X Cell Extraction Buffer PTR.

11.7 Preparation of extracts from tissue homogenates:

- 11.7.1 Tissue lysates are typically prepared by homogenization of tissue that is first minced and thoroughly rinsed in PBS to remove blood (dounce homogenizer recommended).
- 11.7.2 Homogenize 100 to 200 mg of wet tissue in 500 μ L – 1 mL of chilled 1X Cell Extraction Buffer PTR. For lower amounts of tissue adjust volumes accordingly.
- 11.7.3 Incubate on ice for 20 minutes.
- 11.7.4 Centrifuge at 18,000 x g for 20 minutes at 4°C.
- 11.7.5 Transfer the supernatants into clean tubes and discard the pellets.
- 11.7.6 Assay samples immediately or aliquot and store at -80°C. The sample protein concentration in the extract may be quantified using a protein assay.
- 11.7.7 Dilute samples to desired concentration in 1X Cell Extraction Buffer PTR.

12. Plate Preparation

- The 96 well plate strips included with this kit are supplied ready to use. It is not necessary to rinse the plate prior to adding reagents.
- Unused plate strips should be immediately returned to the foil pouch containing the desiccant pack, resealed and stored at 4°C.
- For each assay performed, a minimum of two wells must be used as the zero control.
- For statistical reasons, we recommend each sample should be assayed with a minimum of two replicates (duplicates).
- Differences in well absorbance or “edge effects” have not been observed with this assay.

13. Assay Procedure

- Equilibrate all materials and prepared reagents to room temperature prior to use.
 - We recommend that you assay all standards, controls and samples in duplicate.
- 13.1** Prepare all reagents, working standards, and samples as directed in the previous sections.
 - 13.2** Remove excess microplate strips from the plate frame, return them to the foil pouch containing the desiccant pack, reseal and return to 4°C storage.
 - 13.3** Add 50 µL of all sample or standard to appropriate wells.
 - 13.4** Add 50 µL of the Antibody Cocktail to each well.
 - 13.5** Seal the plate and incubate for 1 hour at room temperature on a plate shaker set to 400 rpm.
 - 13.6** Wash each well with 3 x 350 µL 1X Wash Buffer PT. Wash by aspirating or decanting from wells then dispensing 350 µL 1X Wash Buffer PT into each well. Wash Buffer PT should remain in wells for at least 10 seconds. Complete removal of liquid at each step is essential for good performance. After the last wash invert the plate and tap gently against clean paper towels to remove excess liquid.
 - 13.7** Add 100 µL of TMB Development Solution to each well and incubate for 10 minutes in the dark on a plate shaker set to 400 rpm.

Given variability in laboratory environmental conditions, optimal incubation time may vary between 5 and 20 minutes.

Note: The addition of Stop Solution will change the color from blue to yellow and enhance the signal intensity about 3X. To avoid signal saturation, proceed to the next step before the high concentration of the standard reaches a blue color of O.D.600 equal to 1.0.
 - 13.8** Add 100 µL of Stop Solution to each well. Shake plate on a plate shaker for 1 minute to mix. Record the OD at 450 nm. This is an endpoint reading.
 - 13.9** Alternative to 13.7 – 13.8: Instead of the endpoint reading at 450 nm, record the development of TMB Substrate kinetically. Immediately after addition of TMB Development Solution begin recording the blue color development with elapsed

time in the microplate reader prepared with the following settings:

Mode	Kinetic
Wavelength:	600 nm
Time:	up to 20 min
Interval:	20 sec - 1 min
Shaking:	Shake between readings

Δ **Note:** that an endpoint reading can also be recorded at the completion of the kinetic read by adding 100 µL Stop Solution to each well and recording the OD at 450 nm.

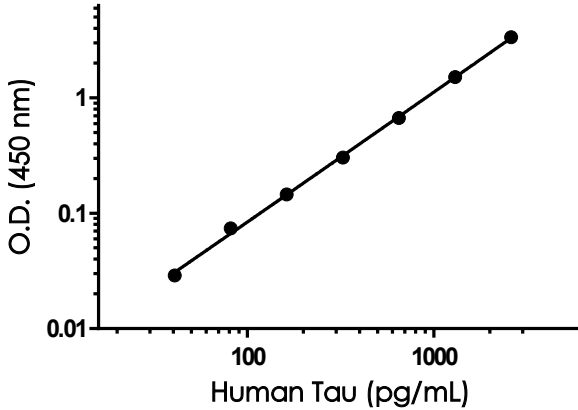
13.10 Analyze the data as described below.

14. Calculations

- 14.1 Calculate the average absorbance value for the blank control (zero) standards. Subtract the average blank control standard absorbance value from all other absorbance values.
- 14.2 **Create a standard curve** by plotting the average blank control subtracted absorbance value for each standard concentration (y-axis) against the target protein concentration (x-axis) of the standard. Use graphing software to draw the best smooth curve through these points to construct the standard curve.
 - Δ **Note:** Most microplate reader software or graphing software will plot these values and fit a curve to the data. A four-parameter curve fit (4PL) is often the best choice; however, other algorithms (e.g. linear, semi-log, log/log, 4-parameter logistic) can also be tested to determine if it provides a better curve fit to the standard values.
- 14.3 Determine the concentration of the target protein in the sample by interpolating the blank control subtracted **absorbance values against the standard curve**. Multiply the resulting value by the appropriate sample dilution factor, if used, to obtain the concentration of target protein in the sample.
- 14.4 Samples generating absorbance values greater than that of the highest standard should be further diluted and reanalyzed. Similarly, samples which measure at an absorbance values less than that of the lowest standard should be retested in a less dilute form.

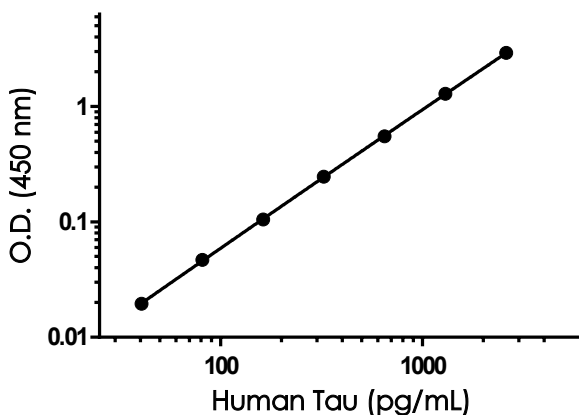
15. Typical Data

Typical standard curve – data provided for demonstration purposes only. A new standard curve must be generated for each assay performed.



Standard Curve Measurements			
Concentration (pg/mL)	O.D 450 nm		Mean O.D
	1	2	
0	0.066	0.066	0.066
40.63	0.097	0.093	0.095
81.25	0.135	0.144	0.140
162.5	0.213	0.210	0.211
325	0.359	0.380	0.369
650	0.758	0.717	0.737
1,300	1.603	1.557	1.580
2,600	3.385	3.460	3.423

Figure 1. Example of human Tau standard curve in Sample Diluent NS. The Tau standard curve was prepared as described in Section 10. Raw data values are shown in the table. Background-subtracted data values (mean +/- SD) are graphed.



Standard Curve Measurements			
Concentration (pg/mL)	O.D 450 nm		Mean O.D
	1	2	
0	0.060	0.059	0.060
40.63	0.080	0.078	0.079
81.25	0.106	0.107	0.106
162.5	0.164	0.164	0.164
325	0.298	0.313	0.306
650	0.612	0.612	0.612
1,300	1.359	1.337	1.348
2,600	3.006	2.938	2.972

Figure 2. Example of human Tau standard curve in 1X Cell Extraction Buffer PTR. The Tau standard curve was prepared as described in Section 10. Raw data values are shown in the table. Background-subtracted data values (mean +/- SD) are graphed.

16. Typical Sample Values

SENSITIVITY –

The MDD was determined by calculating the mean of zero standard replicates and adding 2 standard deviations then extrapolating the corresponding concentration.

Sample Diluent Buffer	n=	Minimal Detectable Dose
Sample Diluent NS	15	16 pg/mL
1X Cell Extraction Buffer PTR	20	21 pg/mL

RECOVERY –

Three concentrations of Tau recombinant protein were spiked in duplicate to the indicated biological matrix to evaluate signal recovery in the working range of the assay.

Sample Type	Average % Recovery	Range (%)
50% Serum	79	76 - 84
25% Plasma - EDTA	78	75 - 83
25% Plasma - Heparin	75	70 - 82
50% Cell Culture Media*	86	84 - 91
50% Cerebrospinal Fluid	90	89 - 90
25 µg/mL SH-SY5Y Mock Treated Extract	102	98 - 107
25 µg/mL SH-SY5Y Staurosporine Treated Extract	97	94 - 101
1.5 µg/mL Human Brain Tissue Extract	108	101 - 111

*Media is RPMI 1640 containing 10% fetal bovine serum.

Linearity of Dilution

Linearity of dilution is determined based on interpolated values from the standard curve. Linearity of dilution defines a sample concentration interval in which interpolated target concentrations are directly proportional to sample dilution.

Recombinant Tau was spiked into the following biological samples and diluted in a 2-fold dilution series in Sample Diluent NS.

Dilution Factor	Interpolated value	50% Human Serum	25% Human Plasma (EDTA)	25% Human Plasma (Heparin)	50% Cell Culture Media	50% CSF
Undiluted	pg/mL	722	2,250	961	863	2,355
	% Expected value	100	100	100	100	100
2	pg/mL	414	1,152	518	495	1,236
	% Expected value	115	102	108	115	105
4	pg/mL	216	607	265	255	636
	% Expected value	120	108	110	118	108
8	pg/mL	109	320	125	131	316
	% Expected value	121	114	104	121	107
16	pg/mL	54.6	156	64.9	63.0	156
	% Expected value	121	111	108	117	106

50% pooled serum and 25% plasma (EDTA, Heparin) samples from healthy donors was measured in duplicate. All values were below the detectable range of the assay.

50% serum from ten individual healthy human female donors was measured in duplicate. All values were below the detectable range of the assay.

Native Tau was measured in the following biological samples in a 2-fold dilution series. Sample dilutions are made in 1X Cell Extraction Buffer PTR.

Dilution Factor	Interpolated value	80 µg/mL SHSY5Y Mock Treated Extract	80 µg/mL SH-SY5Y Staurosporine Treated Extract	3.5 µg/mL Human Brain Extract
Undiluted	pg/mL	2,503	2,280	2,022
	% Expected	100	100	100
2	pg/mL	1,198	1,092	939
	% Expected	96	96	93
4	pg/mL	616.7	545.3	459.6
	% Expected	99	96	91
8	pg/mL	316.9	281.0	220.7
	% Expected	101	99	87
16	pg/mL	162.6	141.9	102.0
	% Expected	104	100	81

PRECISION –

Mean coefficient of variations of interpolated values of Tau from two concentrations of recombinant Tau protein spiked into human serum within the working range of the assay.

	Intra-Assay	Inter-Assay
n =	8	3
CV (%)	5.5	2.7

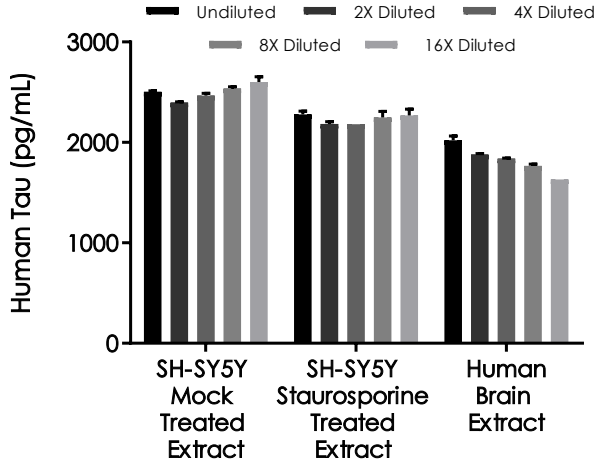


Figure 3. Interpolated concentrations of native Tau in human SH-SY5Y cell treated with or without 1 μM staurosporine for 4 hours based on 80 μg/mL extract loads and human brain tissue based on a 3.5 μg/mL extract load. The concentrations of Tau were measured in duplicate and interpolated from the Tau standard curve and corrected for sample dilution. The interpolated dilution factor corrected values are plotted (mean +/- SD, n=2). The mean Tau concentration was determined to be 2,500 pg/mL in SH-SY5Y mock treated extract, 2,233 pg/mL in SH-SY5Y staurosporine treated extract and 1,849 pg/mL in human brain extract. Staurosporine treatment induces Tau cleavage. As expected, there is minimum difference in Tau concentration between the staurosporine treated and mock-treated SH-SY5Y cell extract, as this kit does not differentiate between the full-length and cleaved form of Tau protein. The cleaved Tau fragment can be specifically measured using ab269557, Cleaved Tau ELISA Kit (Human Asp738/Mouse Asp713). ab269557.

17. Assay Specificity

This kit recognizes both native and recombinant human Tau protein in serum, plasma (EDTA and heparin), cell culture supernatant, cerebrospinal fluid, cell and tissue extract samples only.

Urine, milk, saliva samples have not been tested with this kit.

This kit is incompatible with plasma (citrate) samples.

The kit is 100% reactive with human recombinant Tau-A isoform and 61% reactive with human recombinant Tau-F isoform.

CROSS REACTIVITY

Recombinant human UCHL-1 and alpha synuclein were prepared at 7 ng/mL and assayed for cross reactivity. No cross-reactivity was observed.

INTERFERENCE

Recombinant human UCHL-1 and alpha synuclein were prepared at 50 ng/mL and 2 ng/mL and tested for interference with 2 ng/mL of recombinant human Tau. No interference with was observed.

18. Species Reactivity

This kit recognizes human Tau protein.

Other species reactivity was determined by measuring 3.5 µg/mL brain tissue extract of various species, interpolating the protein concentrations from the human standard curve, and expressing the interpolated concentrations as a percentage of the protein concentration in human brain extract assayed at the same dilution.

Species	%Reactivity
Mouse	133
Rat	55

Please contact our Technical Support team for more information.

19. Troubleshooting

Problem	Reason	Solution
Poor standard curve	Inaccurate Pipetting	Check pipettes
	Improper standard dilution	Prior to opening, briefly spin the stock standard tube and dissolve the powder thoroughly by gentle mixing
Low Signal	Incubation times too brief	Ensure sufficient incubation times; increase to 2 or 3 hour standard/sample incubation
	Inadequate reagent volumes or improper dilution	Check pipettes and ensure correct preparation
	Incubation times with TMB too brief	Ensure sufficient incubation time until blue color develops prior addition of Stop solution
Large CV	Plate is insufficiently washed	Review manual for proper wash technique. If using a plate washer, check all ports for obstructions.
	Contaminated wash buffer	Prepare fresh wash buffer
Low sensitivity	Improper storage of the ELISA kit	Store your reconstituted standards at -80°C, all other assay components 4°C. Keep TMB Development Solution protected from light.
Precipitate in Diluent	Precipitation and/or coagulation of components within the Diluent.	Precipitate can be removed by gently warming the Diluent to 37°C.

20. Notes

Technical Support

Copyright © 2021 Abcam, All Rights Reserved. The Abcam logo is a registered trademark. All information / detail is correct at time of going to print.

For all technical or commercial enquiries please go to:

www.abcam.com/contactus

www.abcam.cn/contactus (China)

www.abcam.co.jp/contactus (Japan)