

Product datasheet

Anti-PSG1 antibody ab233130

5 Images

Overview

<b>Product name</b>	Anti-PSG1 antibody
<b>Description</b>	Rabbit polyclonal to PSG1
<b>Host species</b>	Rabbit
<b>Tested applications</b>	<b>Suitable for:</b> WB, IHC-P
<b>Species reactivity</b>	<b>Reacts with:</b> Human
<b>Immunogen</b>	<p>Recombinant fragment (His-T7-tag) corresponding to Human PSG1 aa 202-401. N-terminal tags. Expressed in E.coli.</p> <p>Sequence:</p> <p>LFLLGVTKYTAGPYECEIRNPVSASRSDPVTLNLLPKLPKP          YTINNLNP          RENKDVLNFTCEPKSENYTYWWLNGQSLPVSPRVKRPIE          NRILIPSVT          RNETGPYQCEIRDYGGIRSDPVTNLVLYGPDLPRIYPSFTY          YRSGEVLY          LSCSADSNPPAQYSWTINEKFQLPGQKLFIRHITTKHSGLY          VCSVRNSAT</p>

Database link: [P11464](#)

 [Run BLAST with](#)

 [Run BLAST with](#)

<b>Positive control</b>	IHC-P: Human liver, breast cancer and colorectal cancer tissue. WB: Recombinant human PSG1 protein; HeLa cell lysate; Mouse kidney and breast cancer lysate.
<b>General notes</b>	This product was previously labelled as Pregnancy Specific Glycoprotein 1

Reproducibility is key to advancing scientific discovery and accelerating scientists' next breakthrough.

Abcam is leading the way with our range of recombinant antibodies, knockout-validated antibodies and knockout cell lines, all of which support improved reproducibility.

We are also planning to innovate the way in which we present recommended applications and species on our product datasheets, so that only applications & species that have been tested in our own labs, our suppliers or by selected trusted collaborators are covered by our Abpromise™ guarantee.

In preparation for this, we have started to update the applications & species that this product is

Abpromise guaranteed for.

We are also updating the applications & species that this product has been “predicted to work with,” however this information is not covered by our Abpromise guarantee.

Applications & species from publications and Abreviews that have not been tested in our own labs or in those of our suppliers are not covered by the Abpromise guarantee.

Please check that this product meets your needs before purchasing. If you have any questions, special requirements or concerns, please send us an inquiry and/or contact our Support team ahead of purchase. Recommended alternatives for this product can be found below, as well as customer reviews and Q&As.

## Properties

---

<b>Form</b>	Liquid
<b>Storage instructions</b>	Shipped at 4°C. Store at +4°C short term (1-2 weeks). Upon delivery aliquot. Store at -20°C long term. Avoid freeze / thaw cycle.
<b>Storage buffer</b>	pH: 7.40 Preservative: 0.02% Sodium azide Constituents: PBS, 50% Glycerol
<b>Purity</b>	Immunogen affinity purified
<b>Purification notes</b>	Antigen-specific affinity chromatography followed by Protein A affinity chromatography.
<b>Clonality</b>	Polyclonal
<b>Isotype</b>	IgG

## Applications

---

Our [Abpromise guarantee](#) covers the use of **ab233130** in the following tested applications.

The application notes include recommended starting dilutions; optimal dilutions/concentrations should be determined by the end user.

Application	Abreviews	Notes
WB		Use a concentration of 0.5 - 5 µg/ml.
IHC-P		Use a concentration of 5 - 20 µg/ml.

---

## Target

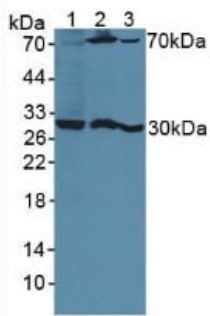
---

<b>Sequence similarities</b>	Belongs to the immunoglobulin superfamily. CEA family. Contains 3 Ig-like C2-type (immunoglobulin-like) domains. Contains 1 Ig-like V-type (immunoglobulin-like) domain.
<b>Developmental stage</b>	PSBG are produced in high quantity during pregnancy.
<b>Cellular localization</b>	Secreted.

---

## Images

---



Western blot - Anti-PSG1 antibody (ab233130)

**All lanes** : Anti-PSG1 antibody (ab233130) at 3 µg/ml

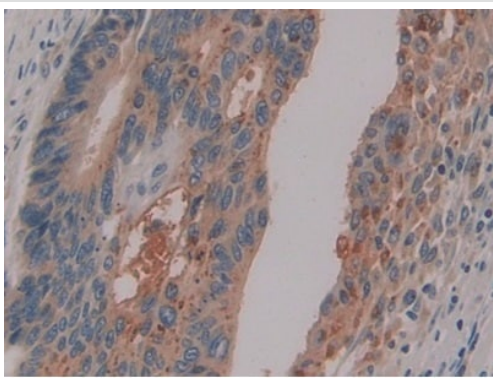
**Lane 1** : HeLa (human epithelial cell line from cervix adenocarcinoma) cell lysate

**Lane 2** : Mouse kidney tissue lysate

**Lane 3** : Mouse breast cancer tissue lysate

### Secondary

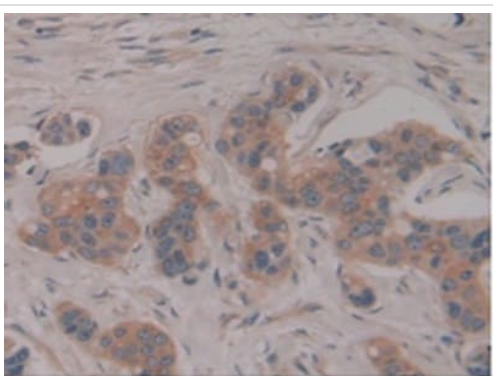
**All lanes** : HRP-Linked Guinea pig Anti-Rabbit at 1/2000 dilution



Immunohistochemistry (Formalin/PFA-fixed paraffin-embedded sections) - Anti-PSG1 antibody (ab233130)

Formalin-fixed, paraffin-embedded human colorectal cancer tissue stained for PSG1 using ab233130 at 10 µg/mL in immunohistochemical analysis.

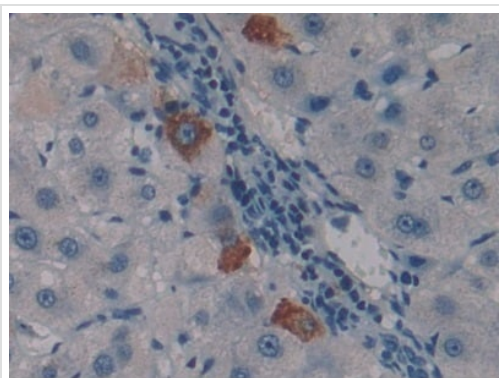
Secondary antibody used HRP-Linked Goat anti-Rabbit IgG polyclonal at 2 µg/ml. DAB staining.



Immunohistochemistry (Formalin/PFA-fixed paraffin-embedded sections) - Anti-PSG1 antibody (ab233130)

Formalin-fixed, paraffin-embedded human breast cancer tissue stained for PSG1 using ab233130 at 10 µg/mL in immunohistochemical analysis.

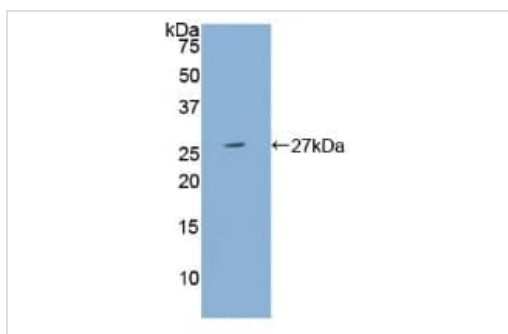
Secondary antibody used HRP-Linked Goat anti-Rabbit IgG polyclonal at 2 µg/ml. DAB staining.



Immunohistochemistry (Formalin/PFA-fixed paraffin-embedded sections) - Anti-PSG1 antibody (ab233130)

Formalin-fixed, paraffin-embedded human liver tissue stained for PSG1 using ab233130 at 10 µg/mL in immunohistochemical analysis.

Secondary antibody used HRP-Linked Goat anti-Rabbit IgG polyclonal at 2 µg/ml. DAB staining.



Western blot - Anti-PSG1 antibody (ab233130)

Anti-PSG1 antibody (ab233130) at 3 µg/ml + Recombinant human PSG1 protein

**Please note:** All products are "FOR RESEARCH USE ONLY. NOT FOR USE IN DIAGNOSTIC PROCEDURES"

### Our Abpromise to you: Quality guaranteed and expert technical support

- Replacement or refund for products not performing as stated on the datasheet
- Valid for 12 months from date of delivery
- Response to your inquiry within 24 hours
- We provide support in Chinese, English, French, German, Japanese and Spanish
- Extensive multi-media technical resources to help you
- We investigate all quality concerns to ensure our products perform to the highest standards

If the product does not perform as described on this datasheet, we will offer a refund or replacement. For full details of the Abpromise, please visit <https://www.abcam.com/abpromise> or contact our technical team.

## Terms and conditions

---

- Guarantee only valid for products bought direct from Abcam or one of our authorized distributors