

Product datasheet

Anti-PSG1 antibody ab238586

3 Images

Overview

Product name	Anti-PSG1 antibody
Description	Rabbit polyclonal to PSG1
Host species	Rabbit
Tested applications	Suitable for: IP, IHC-P
Species reactivity	Reacts with: Human
Immunogen	Recombinant fragment corresponding to Human PSG1 aa 180-419. Database link: P11464
Positive control	IHC-P: Human kidney and placenta tissue. IP: A549 whole cell lysate.
General notes	This product was previously labelled as Pregnancy Specific Glycoprotein 1

Properties

Form	Liquid
Storage instructions	Shipped at 4°C. Store at +4°C short term (1-2 weeks). Upon delivery aliquot. Store at -20°C long term. Avoid freeze / thaw cycle.
Storage buffer	pH: 7.3 Preservative: 0.02% Sodium azide Constituents: PBS, 50% Glycerol
Purity	Immunogen affinity purified
Clonality	Polyclonal
Isotype	IgG

Applications

Our [Abpromise guarantee](#) covers the use of **ab238586** in the following tested applications.

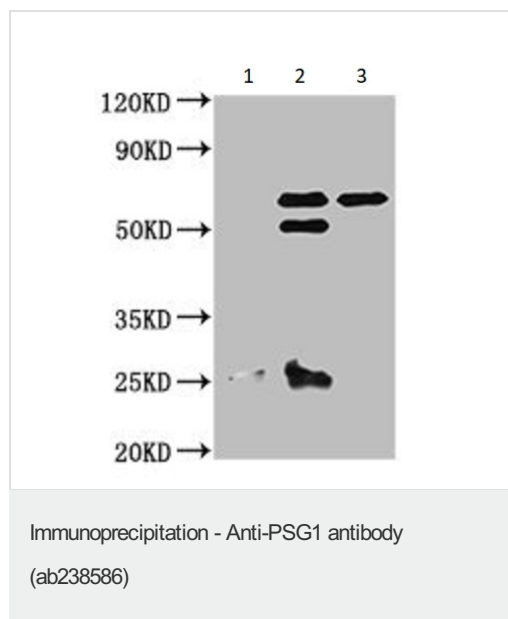
The application notes include recommended starting dilutions; optimal dilutions/concentrations should be determined by the end user.

Application	Abreviews	Notes
IP		1/200 - 1/2000.
IHC-P		1/20 - 1/200.

Target

Sequence similarities	Belongs to the immunoglobulin superfamily. CEA family. Contains 3 Ig-like C2-type (immunoglobulin-like) domains. Contains 1 Ig-like V-type (immunoglobulin-like) domain.
Developmental stage	PSBG are produced in high quantity during pregnancy.
Cellular localization	Secreted.

Images



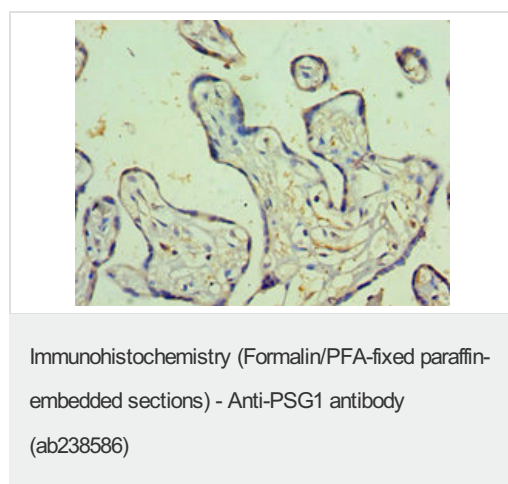
PSG1 was immunoprecipitated from 0.5 mg A549 (Human lung carcinoma cell line) whole cell lysate using 8 µg of ab238586.

Lane 1: Rabbit control IgG in A549 whole cell lysate.

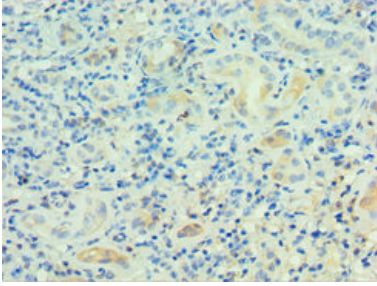
Lane 2: ab238586 (8 µg) IP in A549 whole cell lysate.

Lane 3: A549 whole cell lysate (10 µg input).

For western blotting an HRP-conjugated Protein G antibody was used as the secondary antibody at a 1/2,000 dilution.



Paraffin-embedded human placenta tissue stained for PSG1 with ab238586 at a 1/100 dilution in immunohistochemical analysis.



Paraffin-embedded human kidney tissue stained for PSG1 with ab238586 at a 1/100 dilution in immunohistochemical analysis.

Immunohistochemistry (Formalin/PFA-fixed paraffin-embedded sections) - Anti-PSG1 antibody (ab238586)

Please note: All products are "FOR RESEARCH USE ONLY. NOT FOR USE IN DIAGNOSTIC PROCEDURES"

Our Abpromise to you: Quality guaranteed and expert technical support

- Replacement or refund for products not performing as stated on the datasheet
- Valid for 12 months from date of delivery
- Response to your inquiry within 24 hours
- We provide support in Chinese, English, French, German, Japanese and Spanish
- Extensive multi-media technical resources to help you
- We investigate all quality concerns to ensure our products perform to the highest standards

If the product does not perform as described on this datasheet, we will offer a refund or replacement. For full details of the Abpromise, please visit <https://www.abcam.com/abpromise> or contact our technical team.

Terms and conditions

- Guarantee only valid for products bought direct from Abcam or one of our authorized distributors