


Product datasheet

Anti-PSKH1 antibody ab228730

2 Images

Overview

Product name	Anti-PSKH1 antibody
Description	Rabbit polyclonal to PSKH1
Host species	Rabbit
Tested applications	Suitable for: WB, ICC/IF
Species reactivity	Reacts with: Human Predicted to work with: Mouse, Chicken, Cow, Rhesus monkey 
Immunogen	Recombinant fragment within Human PSKH1 (internal sequence). The exact sequence is proprietary. Database link: P11801
Positive control	WB: HCT 116 whole cell lysate. ICC/IF: HeLa cells.
General notes	<p>Reproducibility is key to advancing scientific discovery and accelerating scientists' next breakthrough.</p> <p>Abcam is leading the way with our range of recombinant antibodies, knockout-validated antibodies and knockout cell lines, all of which support improved reproducibility.</p> <p>We are also planning to innovate the way in which we present recommended applications and species on our product datasheets, so that only applications & species that have been tested in our own labs, our suppliers or by selected trusted collaborators are covered by our Abpromise™ guarantee.</p> <p>In preparation for this, we have started to update the applications & species that this product is Abpromise guaranteed for.</p> <p>We are also updating the applications & species that this product has been “predicted to work with,” however this information is not covered by our Abpromise guarantee.</p> <p>Applications & species from publications and Abreviews that have not been tested in our own labs or in those of our suppliers are not covered by the Abpromise guarantee.</p> <p>Please check that this product meets your needs before purchasing. If you have any questions, special requirements or concerns, please send us an inquiry and/or contact our Support team ahead of purchase. Recommended alternatives for this product can be found below, as well as customer reviews and Q&As.</p>

Properties

Form	Liquid
Storage instructions	Shipped at 4°C. Store at +4°C short term (1-2 weeks). Upon delivery aliquot. Store at -20°C long term. Avoid freeze / thaw cycle.
Storage buffer	pH: 7.00 Preservative: 0.01% Thimerosal (merthiolate) Constituents: 1.21% Tris, 0.75% Glycine, 10% Glycerol (glycerin, glycerine)
Purity	Immunogen affinity purified
Clonality	Polyclonal
Isotype	IgG

Applications

Our [Abpromise guarantee](#) covers the use of **ab228730** in the following tested applications.

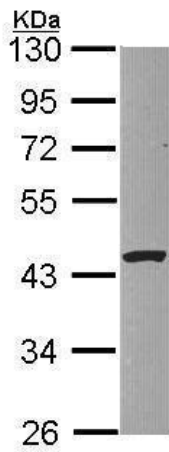
The application notes include recommended starting dilutions; optimal dilutions/concentrations should be determined by the end user.

Application	Abreviews	Notes
WB		1/500 - 1/3000. Predicted molecular weight: 48 kDa.
ICC/IF		1/100 - 1/1000.

Target

Function	May be a SFC-associated serine kinase (splicing factor compartment-associated serine kinase) with a role in intranuclear SR protein (non-snRNP splicing factors containing a serine/arginine-rich domain) trafficking and pre-mRNA processing.
Tissue specificity	Expressed in all tissues and cell lines tested with the highest level of abundance in testis.
Sequence similarities	Belongs to the protein kinase superfamily. CAMK Ser/Thr protein kinase family. Contains 1 protein kinase domain.
Post-translational modifications	Autophosphorylated on serine residues. Myristoylated. Required for membrane association. Prerequisite for palmitoylation to occur. Palmitoylated.
Cellular localization	Golgi apparatus. Cytoplasm > cytoskeleton > centrosome. Nucleus speckle. Endoplasmic reticulum membrane. Cell membrane. Cytoplasm. Localized in the brefeldin A-sensitive Golgi compartment, at centrosomes, in the nucleus with a somewhat speckle-like presence, membrane-associated to the endoplasmic reticulum (ER) and the plasma membrane (PM), and more diffusely in the cytoplasm. Found to concentrate in splicing factor compartments (SFCs) within the nucleus of interphase cells. The acylation-negative form may be only cytoplasmic and nuclear. Acylation seems to allow the sequestering to the intracellular membranes. Myristoylation may mediate targeting to the intracellular non-Golgi membranes and palmitoylation may mediate the targeting to the Golgi membranes. Dual acylation is required to stabilize the interaction with Golgi membranes.

Images

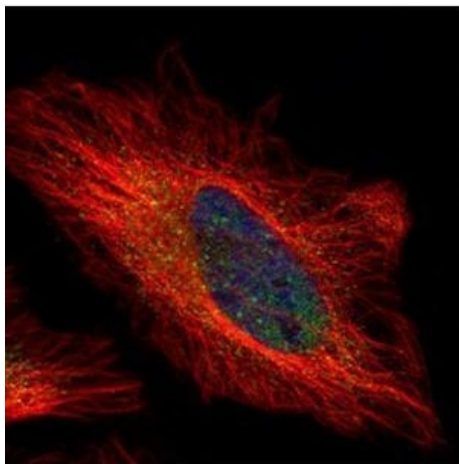


Western blot - Anti-PSKH1 antibody (ab228730)

Anti-PSKH1 antibody (ab228730) at 1/1000 dilution + HCT 116 (human colorectal carcinoma cell line) whole cell lysate at 30 µg

Predicted band size: 48 kDa

10% SDS-PAGE gel.



Immunocytochemistry/ Immunofluorescence - Anti-PSKH1 antibody (ab228730)

Paraformaldehyde-fixed HeLa (human epithelial cell line from cervix adenocarcinoma) cells stained for PSKH1 (green) using ab228730 at a 1/500 dilution in ICC/IF.

Counterstain: alpha Tubulin filaments were labeled with an anti-alpha Tubulin antibody (red) at 1/2000 dilution.

Please note: All products are "FOR RESEARCH USE ONLY. NOT FOR USE IN DIAGNOSTIC PROCEDURES"

Our Abpromise to you: Quality guaranteed and expert technical support

- Replacement or refund for products not performing as stated on the datasheet
- Valid for 12 months from date of delivery
- Response to your inquiry within 24 hours
- We provide support in Chinese, English, French, German, Japanese and Spanish
- Extensive multi-media technical resources to help you
- We investigate all quality concerns to ensure our products perform to the highest standards

If the product does not perform as described on this datasheet, we will offer a refund or replacement. For full details of the Abpromise, please visit <https://www.abcam.com/abpromise> or contact our technical team.

Terms and conditions

- Guarantee only valid for products bought direct from Abcam or one of our authorized distributors