


Product datasheet

Anti-PSMD11 antibody (HRP) ab193139

1 Image

Overview

Product name	Anti-PSMD11 antibody (HRP)
Description	Rabbit polyclonal to PSMD11 (HRP)
Host species	Rabbit
Conjugation	HRP
Tested applications	Suitable for: WB
Species reactivity	Reacts with: Mouse, Rat, Dog, Human, Zebrafish Predicted to work with: Cow 

Immunogen

Recombinant full length protein corresponding to Human PSMD11 aa 2-422.
Sequence:

```

AAAAVVEFQRAQSLSTDREASIDLHSMKRDIQENDE
EAVQVKEQSIL
ELGSLLAKTGQAAELGGLLKYPFLNSISKAKAARLV
RSLDLFLDMEA
ATGQEVELCLECIEWAKSEKRTFLRQALEARLVSLYFD
TKRYQEALHLGS
QLLRELKKMDDKALLVEVQLLESKTYHALSNLPKARA
ALTSARTTANAIY
CPPKLQATLDMQSGIIHAAEEKDWKTAYSFYEFEGY
DSIDSPKAITSL
KYMLLCKIMLNTPEDVQALVSGKLALRYAGRQTEALKC
VAQASKNRSLAD
FEKALTDYRAELRDDPIISTHLAKLYDNLLEQNLIRVIEPF
SRVQIEHIS
SLIKLSKADVERKLSQMILDKKFHGILDQGEGLIIFDEP
PVDKTYEAAL ETIQNMSKVVDLSYLNKAKKLT
    
```

Database link: [O00231](#)

 [Run BLAST with](#)

 [Run BLAST with](#)

Positive control

EC109 whole cell lysate.

Properties

Form Liquid

Storage instructions	Shipped at 4°C. Store at +4°C.
Storage buffer	pH: 7.4 Preservative: 0.03% Proclin Constituents: 50% Glycerol, 49% PBS
Purity	Caprylic Acid - Ammonium Sulfate precipitation
Clonality	Polyclonal
Isotype	IgG

Applications

Our [Abpromise guarantee](#) covers the use of **ab193139** in the following tested applications.

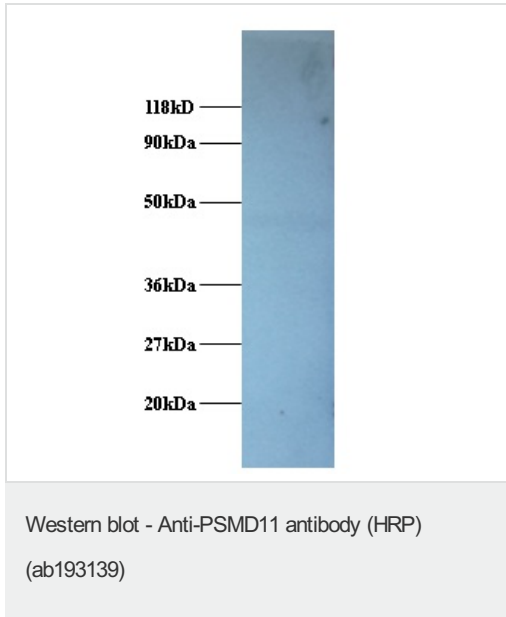
The application notes include recommended starting dilutions; optimal dilutions/concentrations should be determined by the end user.

Application	Abreviews	Notes
WB		1/20 - 1/300. Predicted molecular weight: 47 kDa.

Target

Function	Component of the lid subcomplex of the 26S proteasome, a multiprotein complex involved in the ATP-dependent degradation of ubiquitinated proteins. In the complex, PSMD11 is required for proteasome assembly. Plays a key role in increased proteasome activity in embryonic stem cells (ESCs): its high expression in ESCs promotes enhanced assembly of the 26S proteasome, followed by higher proteasome activity.
Tissue specificity	Highly expressed in embryonic stem cells (ESCs). Expression decreases as ESCs differentiate.
Sequence similarities	Belongs to the proteasome subunit S9 family. Contains 1 PCI domain.
Post-translational modifications	Phosphorylated by AMPK.
Cellular localization	Nucleus. Cytoplasm > cytosol.

Images



Anti-PSMD11 antibody (HRP) (ab193139) at 2 µg/ml + EC109
whole cell lysate at 20 µg

Secondary

Goat polyclonal to Rabbit IgG at 1/15000 dilution

Predicted band size: 47 kDa

Observed band size: 47 kDa

Please note: All products are "FOR RESEARCH USE ONLY. NOT FOR USE IN DIAGNOSTIC PROCEDURES"

Our Abpromise to you: Quality guaranteed and expert technical support

- Replacement or refund for products not performing as stated on the datasheet
- Valid for 12 months from date of delivery
- Response to your inquiry within 24 hours
- We provide support in Chinese, English, French, German, Japanese and Spanish
- Extensive multi-media technical resources to help you
- We investigate all quality concerns to ensure our products perform to the highest standards

If the product does not perform as described on this datasheet, we will offer a refund or replacement. For full details of the Abpromise, please visit <https://www.abcam.com/abpromise> or contact our technical team.

Terms and conditions

- Guarantee only valid for products bought direct from Abcam or one of our authorized distributors