


Product datasheet

Anti-PSMD12 antibody ab137932

★★★★★ 2 Abreviews 1 Image

Overview

<b>Product name</b>	Anti-PSMD12 antibody
<b>Description</b>	Rabbit polyclonal to PSMD12
<b>Host species</b>	Rabbit
<b>Tested applications</b>	<b>Suitable for:</b> WB
<b>Species reactivity</b>	<b>Reacts with:</b> Human <b>Predicted to work with:</b> Mouse, Rat 
<b>Immunogen</b>	Synthetic peptide corresponding to Human PSMD12 (internal sequence).
<b>Positive control</b>	HT29 cell lysate
<b>General notes</b>	This product was previously labelled as 26S proteasome non-ATPase regulatory subunit 12

Properties

<b>Form</b>	Liquid
<b>Storage instructions</b>	Shipped at 4°C. Upon delivery aliquot and store at -20°C. Avoid repeated freeze / thaw cycles.
<b>Storage buffer</b>	pH: 7.40 Preservative: 0.02% Sodium azide Constituents: 49% PBS, 50% Glycerol, 0.88% Sodium chloride Note: PBS is without Mg <sup>2+</sup> and Ca <sup>2+</sup>
<b>Purity</b>	Immunogen affinity purified
<b>Clonality</b>	Polyclonal
<b>Isotype</b>	IgG

Applications

Our [Abpromise guarantee](#) covers the use of **ab137932** in the following tested applications.

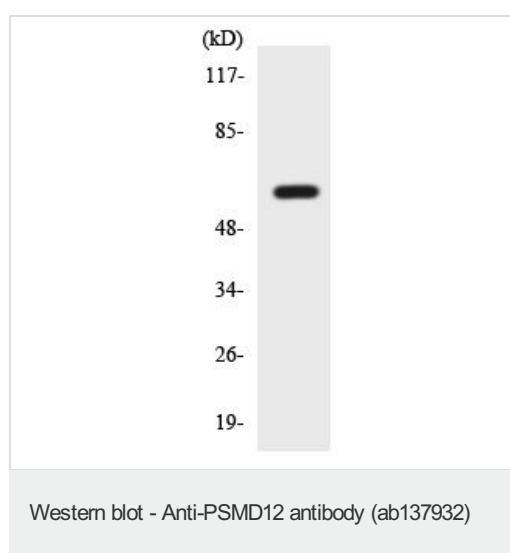
The application notes include recommended starting dilutions; optimal dilutions/concentrations should be determined by the end user.

Application	Abreviews	Notes
WB	★ ★ ☆ ☆ ☆	1/500 - 1/1000. Predicted molecular weight: 52 kDa.

## Target

<b>Function</b>	Acts as a regulatory subunit of the 26S proteasome which is involved in the ATP-dependent degradation of ubiquitinated proteins.
<b>Sequence similarities</b>	Belongs to the proteasome subunit p55 family. Contains 1 PCI domain.

## Images



Anti-PSMD12 antibody (ab137932) at 1/500 dilution + HT29 cell lysate at 30 µg

**Predicted band size:** 52 kDa

**Please note:** All products are "FOR RESEARCH USE ONLY. NOT FOR USE IN DIAGNOSTIC PROCEDURES"

## Our Abpromise to you: Quality guaranteed and expert technical support

- Replacement or refund for products not performing as stated on the datasheet
- Valid for 12 months from date of delivery
- Response to your inquiry within 24 hours
- We provide support in Chinese, English, French, German, Japanese and Spanish
- Extensive multi-media technical resources to help you
- We investigate all quality concerns to ensure our products perform to the highest standards

If the product does not perform as described on this datasheet, we will offer a refund or replacement. For full details of the Abpromise, please visit <https://www.abcam.com/abpromise> or contact our technical team.

## Terms and conditions

- Guarantee only valid for products bought direct from Abcam or one of our authorized distributors