

Product datasheet

Anti-PSMD9 antibody [EPR12947] ab181998

Recombinant **RabMAb**

[5 Images](#)

Overview

Product name	Anti-PSMD9 antibody [EPR12947]
Description	Rabbit monoclonal [EPR12947] to PSMD9
Host species	Rabbit
Tested applications	Suitable for: WB, IHC-P, ICC/IF, Flow Cyt
Species reactivity	Reacts with: Mouse, Rat, Human
Immunogen	Synthetic peptide within Human PSMD9 aa 1-100. The exact sequence is proprietary. Database link: O00233
Positive control	Human fetal liver, HeLa, HepG2 and 293 lysates; Human kidney tissue; HepG2 and HeLa cells.
General notes	

Our RabMAb[®] technology is a patented hybridoma-based technology for making rabbit monoclonal antibodies. For details on our patents, please refer to [RabMAb[®] patents](#).

This product is a [recombinant rabbit monoclonal antibody](#).

Properties

Form	Liquid
Storage instructions	Shipped at 4°C. Store at +4°C short term (1-2 weeks). Upon delivery aliquot. Store at -20°C long term. Avoid freeze / thaw cycle.
Storage buffer	Preservative: 0.01% Sodium azide Constituents: 40% Glycerol, 59% PBS, 0.05% BSA
Purity	Protein A purified
Clonality	Monoclonal
Clone number	EPR12947
Isotype	IgG

Applications

Our [Abpromise guarantee](#) covers the use of **ab181998** in the following tested applications.

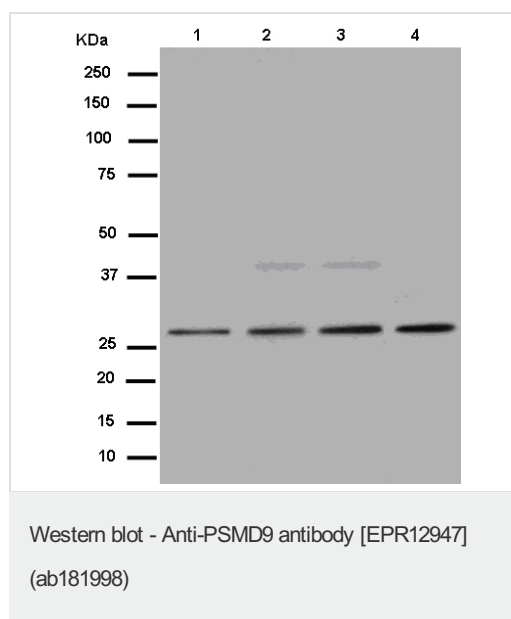
The application notes include recommended starting dilutions; optimal dilutions/concentrations should be determined by the end user.

Application	Abreviews	Notes
WB		1/1000. Detects a band of approximately 27 kDa (predicted molecular weight: 25 kDa).
IHC-P		1/50 - 1/100. Perform heat mediated antigen retrieval with Tris/EDTA buffer pH 9.0 before commencing with IHC staining protocol.
ICC/IF		1/500.
Flow Cyt		1/300. ab172730 - Rabbit monoclonal IgG, is suitable for use as an isotype control with this antibody.

Target

Function	Acts as a chaperone during the assembly of the 26S proteasome, specifically of the base subcomplex of the PA700/19S regulatory complex (RC). During the base subcomplex assembly is part of an intermediate PSMD9:PSMC6:PSMC3 module, also known as modulator trimer complex; PSMD9 is released during the further base assembly process.
Tissue specificity	Expressed in all tissues tested, highly expressed in liver and kidney.
Sequence similarities	Belongs to the proteasome subunit p27 family. Contains 1 PDZ (DHR) domain.

Images



All lanes : Anti-PSMD9 antibody [EPR12947] (ab181998) at 1/1000 dilution

Lane 1 : Human fetal liver lysate

Lane 2 : HeLa cell lysate

Lane 3 : HepG2 cell lysate

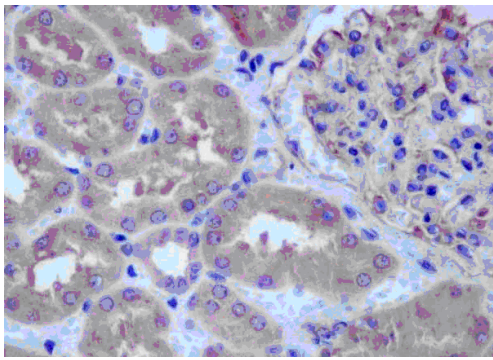
Lane 4 : 293 cell lysate

Lysates/proteins at 20 µg per lane.

Secondary

All lanes : Goat Anti-Rabbit IgG, (H+L) -HRP at 1/1000 dilution

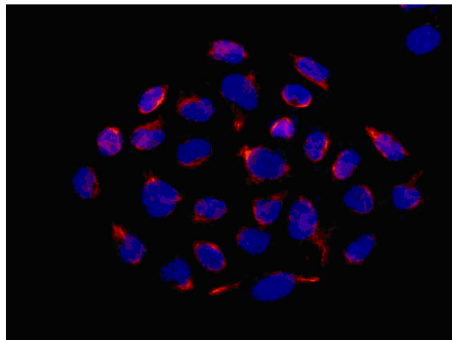
Predicted band size: 25 kDa



Immunohistochemistry (Formalin/PFA-fixed paraffin-embedded sections) - Anti-PSMD9 antibody [EPR12947] (ab181998)

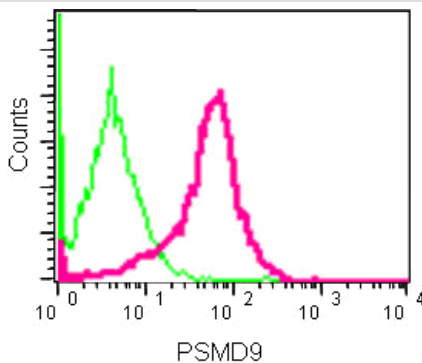
Immunohistochemical analysis of paraffin-embedded Human kidney tissue labeling PSMD9 with ab181998 at 1/100 dilution followed by pre-diluted HRP-conjugated secondary antibody and counter-stained with Hematoxylin.

Perform heat mediated antigen retrieval with EDTA buffer pH 9 before commencing with IHC staining protocol.



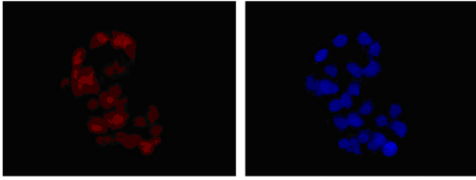
Immunocytochemistry/ Immunofluorescence - Anti-PSMD9 antibody [EPR12947] (ab181998)

Immunofluorescent analysis of HeLa cells (-20°C acetone-fixed) labeling PSMD9 with ab181998 at 1/500 dilution followed by Goat anti rabbit IgG (DyLight 555) secondary and counter-stained with DAPI (blue).



Flow Cytometry - Anti-PSMD9 antibody [EPR12947] (ab181998)

Flow cytometric analysis of HeLa cells (paraformaldehyde-fixed, 2%) labeling PSMD9 with ab181998 at 1/300 dilution (red) or a rabbit IgG (negative) (green), followed by secondary Goat anti-rabbit IgG (FITC) at 1/150 dilution.



Immunocytochemistry/ Immunofluorescence - Anti-PSMD9 antibody [EPR12947] (ab181998)

Immunofluorescent analysis of HepG2 cells (paraformaldehyde-fixed, 4%) labeling PSMD9 with ab181998 at 1/500 dilution. A Goat anti rabbit IgG(Alexa Fluor® 555) was used as secondary antibody. Counterstained with DAPI (blue).

Please note: All products are "FOR RESEARCH USE ONLY. NOT FOR USE IN DIAGNOSTIC PROCEDURES"

Our Abpromise to you: Quality guaranteed and expert technical support

- Replacement or refund for products not performing as stated on the datasheet
- Valid for 12 months from date of delivery
- Response to your inquiry within 24 hours
- We provide support in Chinese, English, French, German, Japanese and Spanish
- Extensive multi-media technical resources to help you
- We investigate all quality concerns to ensure our products perform to the highest standards

If the product does not perform as described on this datasheet, we will offer a refund or replacement. For full details of the Abpromise, please visit <https://www.abcam.com/abpromise> or contact our technical team.

Terms and conditions

- Guarantee only valid for products bought direct from Abcam or one of our authorized distributors