


Product datasheet

Anti-PSMF1 antibody ab140527

★ ★ ★ ★ ★ 1 Abreviews 2 Images

Overview

Product name	Anti-PSMF1 antibody
Description	Rabbit polyclonal to PSMF1
Host species	Rabbit
Tested applications	Suitable for: WB, IP
Species reactivity	Reacts with: Human Predicted to work with: Rabbit, Chimpanzee, Rhesus monkey, Gorilla, Opossum, Orangutan, Elephant 
Immunogen	Synthetic peptide corresponding to Human PSMF1 aa 150-200. Database link: NP_848693.2
Positive control	293T, HeLa and Jurkat whole cell lysates
General notes	This product was previously labelled as Proteasome Inhibitor subunit 1 PI3 1

Properties

Form	Liquid
Storage instructions	Shipped at 4°C. Store at +4°C.
Storage buffer	Preservative: 0.09% Sodium azide Constituent: 99% Tris citrate/phosphate pH: 7-8
Purity	Immunogen affinity purified
Purification notes	ab140527 was affinity purified using an epitope specific to PSMF1 immobilized on a solid support.
Clonality	Polyclonal
Isotype	IgG

Applications

Our [Abpromise guarantee](#) covers the use of **ab140527** in the following tested applications.

The application notes include recommended starting dilutions; optimal dilutions/concentrations should be determined by the end user.

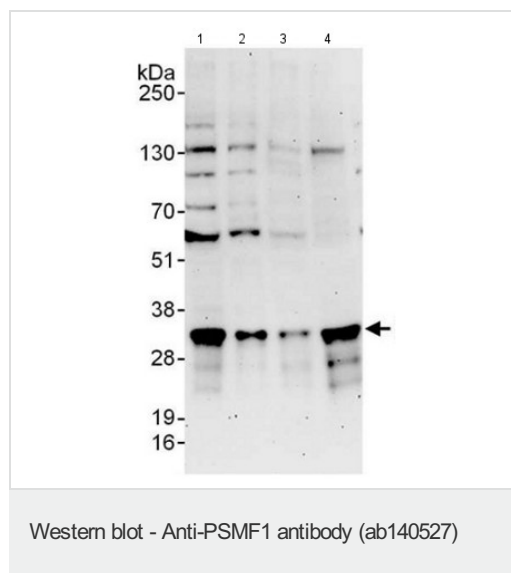
Application	Abreviews	Notes
WB	☆☆☆☆	1/2000 - 1/10000. Predicted molecular weight: 30 kDa.
IP		Use at 2-10 µg/mg of lysate.

Target

Function Plays an important role in control of proteasome function. Inhibits the hydrolysis of protein and peptide substrates by the 20S proteasome. Also inhibits the activation of the proteasome by the proteasome regulatory proteins PA700 and PA28.

Sequence similarities Belongs to the proteasome inhibitor PI31 family.

Images



All lanes : Anti-PSMF1 antibody (ab140527) at 0.1 µg/ml

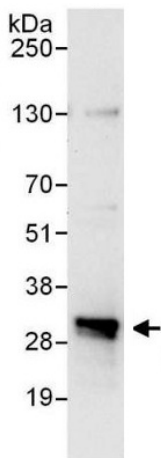
Lane 1 : 293T whole cell lysate at 50 µg

Lane 2 : 293T whole cell lysate at 15 µg

Lane 3 : HeLa whole cell lysate at 50 µg

Lane 4 : Jurkat whole cell lysate at 50 µg

Predicted band size: 30 kDa



Immunoprecipitation - Anti-PSMF1 antibody
(ab140527)

Immunoprecipitation of PSMF1 from 293T whole cell lysate using ab140527 at 6 $\mu\text{g}/\text{mg}$ lysate (1 mg for IP; 20% of IP loaded). For blotting immunoprecipitated PSMF1, ab140527 was used at 0.4 $\mu\text{g}/\text{ml}$.

Detection: chemiluminescence with an exposure time of 10 seconds.

Please note: All products are "FOR RESEARCH USE ONLY. NOT FOR USE IN DIAGNOSTIC PROCEDURES"

Our Abpromise to you: Quality guaranteed and expert technical support

- Replacement or refund for products not performing as stated on the datasheet
- Valid for 12 months from date of delivery
- Response to your inquiry within 24 hours
- We provide support in Chinese, English, French, German, Japanese and Spanish
- Extensive multi-media technical resources to help you
- We investigate all quality concerns to ensure our products perform to the highest standards

If the product does not perform as described on this datasheet, we will offer a refund or replacement. For full details of the Abpromise, please visit <https://www.abcam.com/abpromise> or contact our technical team.

Terms and conditions

- Guarantee only valid for products bought direct from Abcam or one of our authorized distributors