



Product datasheet

Anti-Psoriasin antibody ab231799

3 Images

Overview

Product name	Anti-Psoriasin antibody
Description	Rabbit polyclonal to Psoriasin
Host species	Rabbit
Tested applications	Suitable for: WB
Species reactivity	Reacts with: Cow
Immunogen	<p>Recombinant full length protein corresponding to Bovine Psoriasin aa 1-101. N-terminal His-tag and GST-tag. Expressed in E.coli.</p> <p>Sequence:</p> <p>MSSSQLEQAITDLINLFHKYSGSDDTIEKEDLLRLMKDN FPNFLGACEKR GRDYLSNIFEKQDKNKDRKIDFSEFLSLLADIATDYHNNH SHGAQLCSGGN Q</p> <p>Database link: Q28050</p> <p style="text-align: right;"> Run BLAST with  Run BLAST with</p>
Positive control	WB: Bovine pancreas and thymus lysates; Recombinant bovine Psoriasin protein.

Properties

Form	Liquid
Storage instructions	Shipped at 4°C. Store at +4°C short term (1-2 weeks). Upon delivery aliquot. Store at -20°C long term. Avoid freeze / thaw cycle.
Storage buffer	<p>pH: 7.4</p> <p>Preservative: 0.02% Sodium azide</p> <p>Constituents: PBS, 50% Glycerol</p>
Purity	Immunogen affinity purified
Purification notes	Followed by Protein A affinity chromatography.
Clonality	Polyclonal
Isotype	IgG

Applications

Applications

Our [Abpromise guarantee](#) covers the use of **ab231799** in the following tested applications.

The application notes include recommended starting dilutions; optimal dilutions/concentrations should be determined by the end user.

Application	Abreviews	Notes
WB		Use a concentration of 0.2 - 2 µg/ml.

Target

Tissue specificity

Fetal ear, skin, and tongue and human cell lines. Highly up-regulated in psoriatic epidermis. Also highly expressed in the urine of bladder squamous cell carcinoma (SCC) bearing patients.

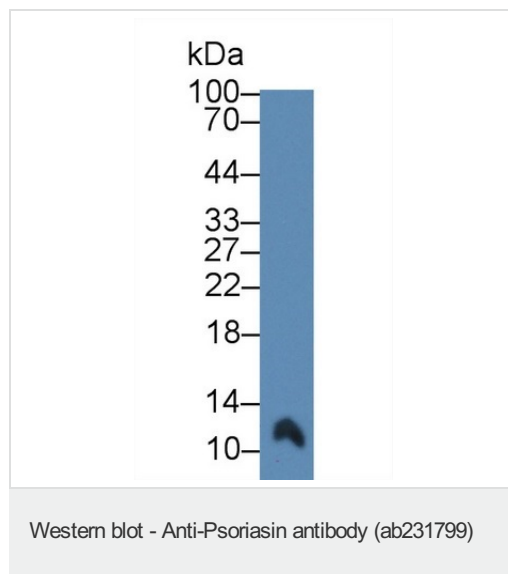
Sequence similarities

Belongs to the S-101 family.
Contains 2 EF-hand domains.

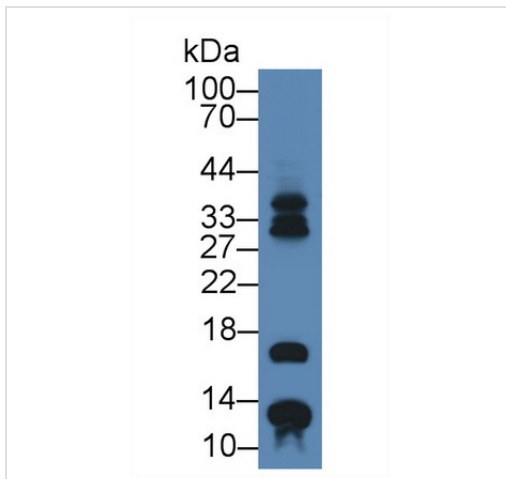
Cellular localization

Cytoplasm. Secreted. Secreted by a non-classical secretory pathway.

Images

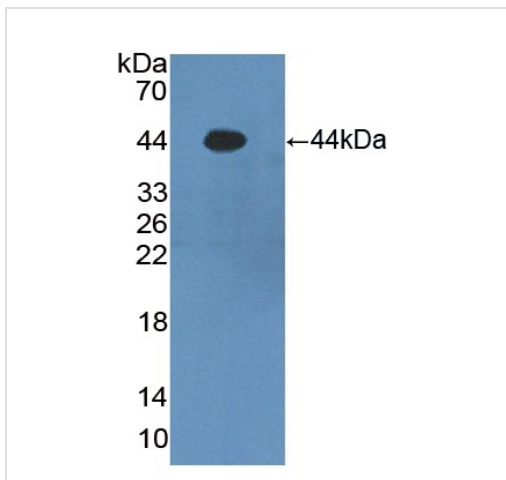


Anti-Psoriasis antibody (ab231799) at 2 µg/ml + Bovine thymus tissue lysate



Anti-Psoriasin antibody (ab231799) at 2 µg/ml + Bovine pancreas tissue lysate

Western blot - Anti-Psoriasin antibody (ab231799)



Anti-Psoriasin antibody (ab231799) at 1 µg/ml + Recombinant bovine Psoriasin protein

Western blot - Anti-Psoriasin antibody (ab231799)

Please note: All products are "FOR RESEARCH USE ONLY. NOT FOR USE IN DIAGNOSTIC PROCEDURES"

Our Abpromise to you: Quality guaranteed and expert technical support

- Replacement or refund for products not performing as stated on the datasheet
- Valid for 12 months from date of delivery
- Response to your inquiry within 24 hours
- We provide support in Chinese, English, French, German, Japanese and Spanish
- Extensive multi-media technical resources to help you
- We investigate all quality concerns to ensure our products perform to the highest standards

If the product does not perform as described on this datasheet, we will offer a refund or replacement. For full details of the Abpromise, please visit <https://www.abcam.com/abpromise> or contact our technical team.

Terms and conditions

- Guarantee only valid for products bought direct from Abcam or one of our authorized distributors