


Product datasheet

Anti-PSRC1/DDA3 antibody ab187199

1 Image

Overview

<b>Product name</b>	Anti-PSRC1/DDA3 antibody
<b>Description</b>	Rabbit polyclonal to PSRC1/DDA3
<b>Host species</b>	Rabbit
<b>Tested applications</b>	<b>Suitable for:</b> WB
<b>Species reactivity</b>	<b>Reacts with:</b> Human <b>Predicted to work with:</b> Cow 
<b>Immunogen</b>	Recombinant fragment corresponding to Human PSRC1/DDA3 aa 1-215 (N terminal). Database link: <a href="#">Q6PGN9</a>
<b>Positive control</b>	MCF-7, HepG2 and 293T cell extracts.
<b>General notes</b>	<p>The Life Science industry has been in the grips of a reproducibility crisis for a number of years. Abcam is leading the way in addressing this with our range of recombinant monoclonal antibodies and knockout edited cell lines for gold-standard validation. Please check that this product meets your needs before purchasing.</p> <p>If you have any questions, special requirements or concerns, please send us an inquiry and/or contact our Support team ahead of purchase. Recommended alternatives for this product can be found below, along with publications, customer reviews and Q&amp;As</p>

Properties

<b>Form</b>	Liquid
<b>Storage instructions</b>	Shipped at 4°C. Store at +4°C short term (1-2 weeks). Upon delivery aliquot. Store at -20°C long term. Avoid freeze / thaw cycle.
<b>Storage buffer</b>	pH: 7.30 Preservative: 0.02% Sodium azide Constituents: 49% PBS, 50% Glycerol
<b>Purity</b>	Immunogen affinity purified
<b>Clonality</b>	Polyclonal
<b>Isotype</b>	IgG

Applications

## The Abpromise guarantee

Our [Abpromise guarantee](#) covers the use of ab187199 in the following tested applications.

The application notes include recommended starting dilutions; optimal dilutions/concentrations should be determined by the end user.

Application	Abreviews	Notes
WB		1/500 - 1/2000. Predicted molecular weight: 39 kDa.

## Target

### Function

Required for normal progression through mitosis. Required for normal congress of chromosomes at the metaphase plate, and for normal rate of chromosomal segregation during anaphase. Plays a role in the regulation of mitotic spindle dynamics. Increases the rate of turnover of microtubules on metaphase spindles, and contributes to the generation of normal tension across sister kinetochores. Recruits KIF2A to the mitotic spindle and spindle poles. May participate in p53/TP53-regulated growth suppression.

### Tissue specificity

Widely expressed in adult and fetal tissues, with highest expression in the adult brain and fetal thymus. Not detected in adult skeletal muscle.

### Sequence similarities

Belongs to the PSRC1 family.

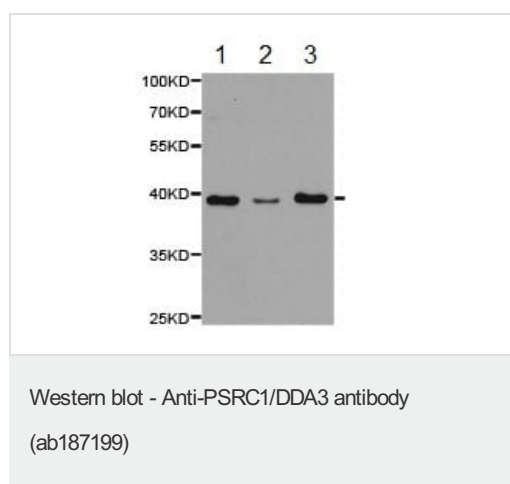
### Post-translational modifications

Phosphorylated during mitosis.

### Cellular localization

Cytoplasm. Cytoplasm > cytoskeleton > spindle. Cytoplasm > cytoskeleton > spindle pole. Detected at the mitotic spindle and spindle poles. Diffusely distributed throughout the cell during interphase.

## Images



**All lanes :** Anti-PSRC1/DDA3 antibody (ab187199) at 1/500 dilution

**Lane 1 :** MCF-7 cell extract

**Lane 2 :** HepG2 cell extract

**Lane 3 :** 293T cell extract

**Predicted band size:** 39 kDa

**Please note:** All products are "FOR RESEARCH USE ONLY. NOT FOR USE IN DIAGNOSTIC PROCEDURES"

## Our Abpromise to you: Quality guaranteed and expert technical support

- Replacement or refund for products not performing as stated on the datasheet

- Valid for 12 months from date of delivery
- Response to your inquiry within 24 hours
  
- We provide support in Chinese, English, French, German, Japanese and Spanish
- Extensive multi-media technical resources to help you
- We investigate all quality concerns to ensure our products perform to the highest standards

If the product does not perform as described on this datasheet, we will offer a refund or replacement. For full details of the Abpromise, please visit <https://www.abcam.com/abpromise> or contact our technical team.

### **Terms and conditions**

---

- Guarantee only valid for products bought direct from Abcam or one of our authorized distributors