

Product datasheet

Anti-PTDSS1 antibody ab237019

3 Images

Overview

Product name	Anti-PTDSS1 antibody
Description	Rabbit polyclonal to PTDSS1
Host species	Rabbit
Tested applications	Suitable for: WB, IHC-P, ICC/IF
Species reactivity	Reacts with: Human
Immunogen	Recombinant fragment corresponding to Human PTDSS1 aa 1-35. Database link: P48651
Positive control	WB: EC109 and HEK-293T whole cell lysates. IHC-P: Human liver tissue. ICC/IF: HepG2 cells.

Properties

Form	Liquid
Storage instructions	Shipped at 4°C. Store at +4°C short term (1-2 weeks). Upon delivery aliquot. Store at -20°C long term. Avoid freeze / thaw cycle.
Storage buffer	pH: 7.40 Preservative: 0.03% Proclin Constituents: 50% Glycerol, PBS
Purity	Protein G purified
Purification notes	Purity >95%.
Clonality	Polyclonal
Isotype	IgG

Applications

Our [Abpromise guarantee](#) covers the use of **ab237019** in the following tested applications.

The application notes include recommended starting dilutions; optimal dilutions/concentrations should be determined by the end user.

Application	Abreviews	Notes
WB		1/500 - 1/2000. Predicted molecular weight: 56, 39, 35 kDa.

Application	Abreviews	Notes
IHC-P		1/20 - 1/200.
ICC/IF		1/50 - 1/200.

Target

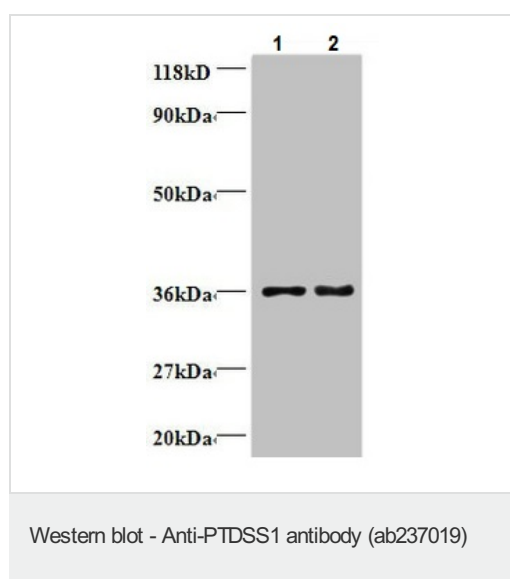
Relevance

Phosphatidylserine (PS) accounts for 5 to 10% of cell membrane phospholipids. In addition to its role as a structural component, PS is involved in cell signaling, blood coagulation, and apoptosis. PS is synthesized by a calcium dependent base exchange reaction catalyzed by PS synthases (EC 2.7.8.8), like PTDSS1, that exchange L-serine for the polar head group of phosphatidylcholine (PC) or phosphatidylethanolamine (PE) (Sturbois-Balcerzak et al., 2001 [PubMed 11084049]).

Cellular localization

Membrane; Multi pass membrane protein.

Images



All lanes : Anti-PTDSS1 antibody (ab237019) at 1/500 dilution

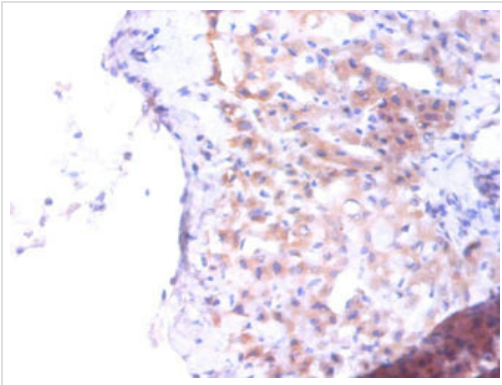
Lane 1 : EC109 whole cell lysate

Lane 2 : HEK-293T (Human epithelial cell line from embryonic kidney transformed with large T antigen) whole cell lysate

Secondary

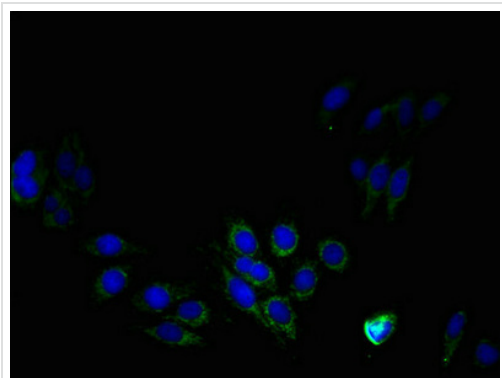
All lanes : Goat polyclonal to Rabbit IgG at 1/50000 dilution

Predicted band size: 56, 39, 35 kDa



Immunohistochemistry (Formalin/PFA-fixed paraffin-embedded sections) - Anti-PTDSS1 antibody (ab237019)

Paraffin-embedded human liver tissue stained for PTDSS1 using ab237019 at 1/100 dilution in immunohistochemical analysis.



Immunocytochemistry/ Immunofluorescence - Anti-PTDSS1 antibody (ab237019)

HepG2 (Human liver hepatocellular carcinoma cell line) cells stained for PTDSS1 (green) using ab237019 at 1/100 dilution in ICC/IF, followed by an Alexa-Fluor 488[®] conjugated Goat Anti-Rabbit IgG (H+L).

Please note: All products are "FOR RESEARCH USE ONLY. NOT FOR USE IN DIAGNOSTIC PROCEDURES"

Our Abpromise to you: Quality guaranteed and expert technical support

- Replacement or refund for products not performing as stated on the datasheet
- Valid for 12 months from date of delivery
- Response to your inquiry within 24 hours
- We provide support in Chinese, English, French, German, Japanese and Spanish
- Extensive multi-media technical resources to help you
- We investigate all quality concerns to ensure our products perform to the highest standards

If the product does not perform as described on this datasheet, we will offer a refund or replacement. For full details of the Abpromise, please visit <https://www.abcam.com/abpromise> or contact our technical team.

Terms and conditions

- Guarantee only valid for products bought direct from Abcam or one of our authorized distributors