


Product datasheet

Anti-PTGER3 antibody - Cytoplasmic domain ab189122

1 Image

Overview

| | |
|----------------------------|---|
| Product name | Anti-PTGER3 antibody - Cytoplasmic domain |
| Description | Rabbit polyclonal to PTGER3 - Cytoplasmic domain |
| Host species | Rabbit |
| Specificity | BLAST analysis of the peptide immunogen showed no homology with other human proteins. |
| Tested applications | Suitable for: IHC-P |
| Species reactivity | Reacts with: Human Predicted to work with: Mouse, Rat, Rabbit, Horse, Cow, Pig, Monkey, Gorilla, Common marmoset  |
| Immunogen | Synthetic peptide corresponding to Human PTGER3 (intracellular). (16 amino acid peptide from the 1st cytoplasmic domain). Database link: P43115 |
| Positive control | Human brain cortex tissue. |

Properties

| | |
|-----------------------------|---|
| Form | Liquid |
| Storage instructions | Shipped at 4°C. Store at +4°C short term (1-2 weeks). Upon delivery aliquot. Store at -20°C long term. Avoid freeze / thaw cycle. |
| Storage buffer | Preservative: 0.1% Sodium azide Constituent: 99% PBS |
| Purity | Immunogen affinity purified |
| Clonality | Polyclonal |
| Isotype | IgG |

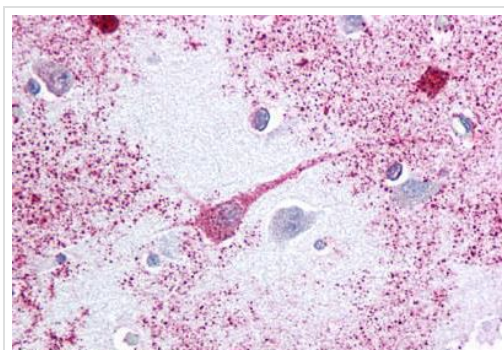
Applications

Our [Abpromise guarantee](#) covers the use of **ab189122** in the following tested applications.

The application notes include recommended starting dilutions; optimal dilutions/concentrations should be determined by the end user.

| Application | Abreviews | Notes |
|------------------------------|-----------|--|
| IHC-P | | Use a concentration of 2 µg/ml. Perform heat mediated antigen retrieval before commencing with IHC staining protocol. |
| Target | | |
| Function | | Receptor for prostaglandin E2 (PGE2); the EP3 receptor may be involved in inhibition of gastric acid secretion, modulation of neurotransmitter release in central and peripheral neurons, inhibition of sodium and water reabsorption in kidney tubulus and contraction in uterine smooth muscle. The activity of this receptor can couple to both the inhibition of adenylate cyclase mediated by G-I proteins, and to an elevation of intracellular calcium. The various isoforms have identical ligand binding properties but can interact with different second messenger systems. |
| Tissue specificity | | Expressed in small intestine, heart, pancreas, gastric fundic mucosa, mammary artery and pulmonary vessels. |
| Sequence similarities | | Belongs to the G-protein coupled receptor 1 family. |
| Cellular localization | | Cell membrane. |

Images



Immunohistochemical analysis of formalin-fixed, paraffin-embedded human brain cortex tissue labeling PTGER3 with ab189122 at 2 µg/ml.

Immunohistochemistry (Formalin/PFA-fixed paraffin-embedded sections) - Anti-PTGER3 antibody - Cytoplasmic domain (ab189122)

Please note: All products are "FOR RESEARCH USE ONLY. NOT FOR USE IN DIAGNOSTIC PROCEDURES"

Our Abpromise to you: Quality guaranteed and expert technical support

- Replacement or refund for products not performing as stated on the datasheet
- Valid for 12 months from date of delivery
- Response to your inquiry within 24 hours
- We provide support in Chinese, English, French, German, Japanese and Spanish
- Extensive multi-media technical resources to help you

- We investigate all quality concerns to ensure our products perform to the highest standards

If the product does not perform as described on this datasheet, we will offer a refund or replacement. For full details of the Abpromise, please visit <https://www.abcam.com/abpromise> or contact our technical team.

Terms and conditions

- Guarantee only valid for products bought direct from Abcam or one of our authorized distributors