


Product datasheet

Anti-PTGES2/Gbf1 antibody ab96189

2 References 1 Image

Overview

Product name	Anti-PTGES2/Gbf1 antibody
Description	Rabbit polyclonal to PTGES2/Gbf1
Host species	Rabbit
Tested applications	Suitable for: WB
Species reactivity	Reacts with: Human Predicted to work with: Mouse, Rat, Cow, Dog 
Immunogen	Recombinant fragment corresponding to Human PTGES2/Gbf1 aa 106-313. Database link: NP_079348
Positive control	293T and Molt4 whole cell lysates; HepG2 and Raji lysates
General notes	This product was previously labelled as PTGES2

Reproducibility is key to advancing scientific discovery and accelerating scientists' next breakthrough.

Abcam is leading the way with our range of recombinant antibodies, knockout-validated antibodies and knockout cell lines, all of which support improved reproducibility.

We are also planning to innovate the way in which we present recommended applications and species on our product datasheets, so that only applications & species that have been tested in our own labs, our suppliers or by selected trusted collaborators are covered by our Abpromise™ guarantee.

In preparation for this, we have started to update the applications & species that this product is Abpromise guaranteed for.

We are also updating the applications & species that this product has been “predicted to work with,” however this information is not covered by our Abpromise guarantee.

Applications & species from publications and Abreviews that have not been tested in our own labs or in those of our suppliers are not covered by the Abpromise guarantee.

Please check that this product meets your needs before purchasing. If you have any questions, special requirements or concerns, please send us an inquiry and/or contact our Support team ahead of purchase. Recommended alternatives for this product can be found below, as well as customer reviews and Q&As.

Properties

Form	Liquid
Storage instructions	Shipped at 4°C. Upon delivery aliquot and store at -20°C or -80°C. Avoid repeated freeze / thaw cycles.
Storage buffer	pH: 7.00 Preservative: 0.01% Thimerosal (merthiolate) Constituents: 1.21% Tris, 0.75% Glycine, 10% Glycerol (glycerin, glycerine)
Purity	Immunogen affinity purified
Clonality	Polyclonal
Isotype	IgG

Applications

Our [Abpromise guarantee](#) covers the use of **ab96189** in the following tested applications.

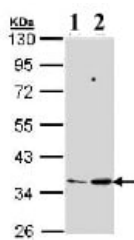
The application notes include recommended starting dilutions; optimal dilutions/concentrations should be determined by the end user.

Application	Abreviews	Notes
WB		1/500 - 1/3000. Predicted molecular weight: 42 kDa.

Target

Function	Isomerase that catalyzes the conversion of unstable intermediate of prostaglandin E2 H2 (PGH2) into the more stable prostaglandin E2 (PGE2) form. May also have transactivation activity toward IFN-gamma (IFNG), possibly via an interaction with CEBPB; however, the relevance of transcription activation activity remains unclear.
Tissue specificity	Widely expressed. Expressed in the heart, including apex, inter-ventricular septum, both atria and ventricles, but not in the aorta. Also expressed in fetal heart. Detected in various regions of the brain: cerebellum; occipital, frontal and parietal lobes. Also expressed in the lymph nodes, skeletal muscle, kidney and trachea, but not in the thymus or lung. Overexpressed in colorectal cancer.
Pathway	Lipid metabolism; prostaglandin biosynthesis.
Sequence similarities	Belongs to the GST superfamily. Contains 1 glutaredoxin domain. Contains 1 GST C-terminal domain.
Cellular localization	Golgi apparatus membrane and Cytoplasm > perinuclear region. Synthesized as a Golgi membrane-bound protein, which is further cleaved into the predominant soluble truncated form. The truncated form is cytoplasmic and is enriched in the perinuclear region.

Images



Western blot - Anti-PTGES2/Gbf1 antibody
(ab96189)

All lanes : Anti-PTGES2/Gbf1 antibody (ab96189) at 1/1000 dilution

Lane 1 : 293T whole cell lysate

Lane 2 : Molt4 whole cell lysate

Lysates/proteins at 30 µg per lane.

Predicted band size: 42 kDa

10% SDS PAGE

Please note: All products are "FOR RESEARCH USE ONLY. NOT FOR USE IN DIAGNOSTIC PROCEDURES"

Our Abpromise to you: Quality guaranteed and expert technical support

- Replacement or refund for products not performing as stated on the datasheet
- Valid for 12 months from date of delivery
- Response to your inquiry within 24 hours
- We provide support in Chinese, English, French, German, Japanese and Spanish
- Extensive multi-media technical resources to help you
- We investigate all quality concerns to ensure our products perform to the highest standards

If the product does not perform as described on this datasheet, we will offer a refund or replacement. For full details of the Abpromise, please visit <https://www.abcam.com/abpromise> or contact our technical team.

Terms and conditions

- Guarantee only valid for products bought direct from Abcam or one of our authorized distributors