

Product datasheet

Anti-PTGR1 antibody ab229567

1 Image

Overview

Product name	Anti-PTGR1 antibody
Description	Rabbit polyclonal to PTGR1
Host species	Rabbit

Tested Applications & Species

Application	Species
WB	Human

See all applications and species data

Immunogen	Recombinant fragment within Human PTGR1 (internal sequence). The exact sequence is proprietary. Database link: Q14914
Positive control	WB: PL45, PANC-1, MIAPACA2, BxPC-3 and Capan2 whole cell lysates.

Properties

Form	Liquid
Storage instructions	Shipped at 4°C. Store at +4°C short term (1-2 weeks). Upon delivery aliquot. Store at -20°C long term. Avoid freeze / thaw cycle.
Storage buffer	pH: 7.00 Preservative: 0.01% Thimerosal (merthiolate) Constituents: 1.21% Tris, 0.75% Glycine, 20% Glycerol (glycerin, glycerine)
Purity	Immunogen affinity purified
Clonality	Polyclonal
Isotype	IgG

Applications

The Abpromise guarantee Our [Abpromise guarantee](#) covers the use of **ab229567** in the following tested applications. The application notes include recommended starting dilutions; optimal dilutions/concentrations should be determined by the end user.

✔ Guaranteed

Tested applications are guaranteed to work and covered by our Abpromise guarantee.

⚠ Predicted

Predicted to work for this combination of applications and species but not guaranteed.

✘ Incompatible

Does not work for this combination of applications and species.

Application	Species
WB	✔ Human

Application	Abreviews	Notes
WB		1/500 - 1/3000. Predicted molecular weight: 35 kDa.

Target

Function

Functions as 15-oxo-prostaglandin 13-reductase and acts on 15-oxo-PGE1, 15-oxo-PGE2 and 15-oxo-PGE2-alpha. Has no activity towards PGE1, PGE2 and PGE2-alpha (By similarity). Catalyzes the conversion of leukotriene B4 into its biologically less active metabolite, 12-oxo-leukotriene B4. This is an initial and key step of metabolic inactivation of leukotriene B4.

Tissue specificity

High expression in the kidney, liver, and intestine but not in leukocytes.

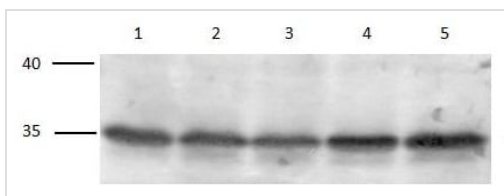
Sequence similarities

Belongs to the NADP-dependent oxidoreductase L4BD family.

Cellular localization

Cytoplasm.

Images



Western blot - Anti-PTGR1 antibody (ab229567)

All lanes : Anti-PTGR1 antibody (ab229567) at 1/500 dilution

Lane 1 : PL45 whole cell lysate

Lane 2 : PANC-1 (human pancreatic epithelial carcinoma cell line) whole cell lysate

Lane 3 : MIAPACA2 whole cell lysate

Lane 4 : BxPC-3 (human pancreas adenocarcinoma cell line) whole cell lysate

Lane 5 : Capan2 whole cell lysate

Lysates/proteins at 40 µg per lane.

Predicted band size: 35 kDa

Please note: All products are "FOR RESEARCH USE ONLY. NOT FOR USE IN DIAGNOSTIC PROCEDURES"

Our Abpromise to you: Quality guaranteed and expert technical support

- Replacement or refund for products not performing as stated on the datasheet
- Valid for 12 months from date of delivery
- Response to your inquiry within 24 hours

- We provide support in Chinese, English, French, German, Japanese and Spanish
- Extensive multi-media technical resources to help you
- We investigate all quality concerns to ensure our products perform to the highest standards

If the product does not perform as described on this datasheet, we will offer a refund or replacement. For full details of the Abpromise, please visit <https://www.abcam.com/abpromise> or contact our technical team.

Terms and conditions

- Guarantee only valid for products bought direct from Abcam or one of our authorized distributors