

Product datasheet

Anti-PTP-H1 antibody ab202124

1 Image

Overview

Product name	Anti-PTP-H1 antibody
Description	Rabbit polyclonal to PTP-H1
Host species	Rabbit
Tested applications	Suitable for: IHC-P, WB
Species reactivity	Reacts with: Mouse, Rat, Human
Immunogen	<p>Recombinant full length protein corresponding to Human PTP-H1 aa 1-913. Sequence:</p> <p>MTSRLRALGGRINNIRTSELPKEKTRSEVICSIHFLDGVV QTFKVTQDT GQVLLDMVHNHLGVTEKEYFGLQHDDSDSPRWLE ASKAIRKQLKGGFP CTLHFRVRFIPDPNTLQQEQTRHLYFLQLKMDICEGRL TCPLNSAVVLA SYAVQSHFGDYNSSIHHPGYLSDSHFIPDQNEFLTKV ESLHEQHSGLKQ SEAESCINIARTLDFYGVELHSGRDLHNLDLMIGIASA GVAVYRKYICT SFYPWVNILKISFKRKKFFIHQRQKQAESREHIVAFNML NYRSCKNLWKS CVEHHTFFQAKKLLPQEKVLSQYWTMGSRNKTSV NNQYCKKVIKGMVW NPAMRRSLSVEHLETSLPSRSPITPNWRSPRLRHEI RKPRHSSADNLA NEMTYTETEDVFYTYKGLAPQSDSEVSQNRSPHQ ESLSENNPAQSYL TQKSSSSVSPSSNAPGSCSPDGVDQQLLDDFHRVTK GGSTEDASQYYCDK NDNGDSYLVLRITPDEDGKFGFNLKGGVDQKMPVV SRINPESPADTCI PKLNEGDQMLINGRDISEHTDQVVMFIKASRESHSRE LALVIRRRRAVR SFADFKSEDELNQLFPEAIFPMCPEGGDTLEGSMQAL KKGLESGTVLIQF EQLYRKKPGLAITFAKLPQNLDKNRYKDVLPYDTTRVLL QGNEDYINASY</p>

VNMEIPAANLVNKYIATQGPLPHTCAQFWQVVWDQKL
SLVMLTTLTERG
RTKCHQYWPDPDVMNHGGFHIQCQSEDCTIAYVSRE
MLVTNTQTGEEHT
VTHLQYVAWPDHGVPPDSSDFLEFVNYRSLRVDSE
PVLVHCSAGIGRTG
VLVTMETAMCLTERNLPYPLDIVRKMRDQRAMMVQTS
SQYKFVCEAILR VYEEGLVQMLDPS

Database link: [P26045](#)

 [Run BLAST with](#)

 [Run BLAST with](#)

Positive control

A549, BT474, 293T, mouse brain and rat brain cell lysates.

General notes

Protein previously labeled as PTPN3.

Properties

Form	Liquid
Storage instructions	Shipped at 4°C. Store at +4°C short term (1-2 weeks). Upon delivery aliquot. Store at -20°C long term. Avoid freeze / thaw cycle.
Storage buffer	pH: 7.3 Preservative: 0.02% Sodium azide Constituents: 49% PBS, 50% Glycerol
Purity	Immunogen affinity purified
Clonality	Polyclonal
Isotype	IgG

Applications

Our [Abpromise guarantee](#) covers the use of **ab202124** in the following tested applications.

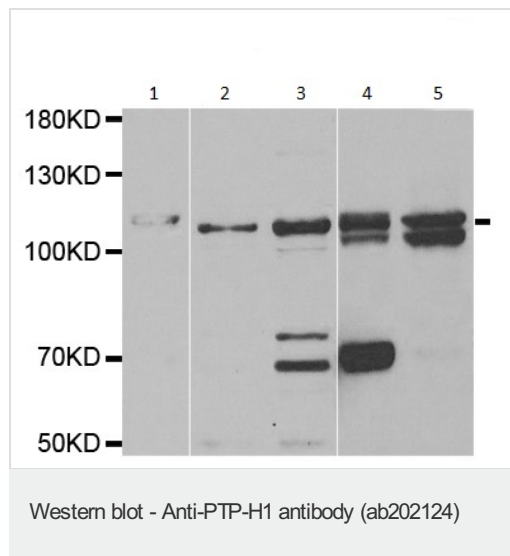
The application notes include recommended starting dilutions; optimal dilutions/concentrations should be determined by the end user.

Application	Abreviews	Notes
IHC-P		1/50 - 1/200.
WB		1/500 - 1/2000. Predicted molecular weight: 103 kDa.

Target

Function May act at junctions between the membrane and the cytoskeleton. Possesses tyrosine phosphatase activity.

Sequence similarities Belongs to the protein-tyrosine phosphatase family. Non-receptor class subfamily. Contains 1 FERM domain. Contains 1 PDZ (DHR) domain. Contains 1 tyrosine-protein phosphatase domain.

Images

All lanes : Anti-PTP-H1 antibody (ab202124) at 1/500 dilution

Lane 1 : A549 cell lysate

Lane 2 : BT474 cell lysate

Lane 3 : 293T cell lysate

Lane 4 : Mouse brain cell lysate

Lane 5 : Rat brain cell lysate

Predicted band size: 103 kDa

Please note: All products are "FOR RESEARCH USE ONLY. NOT FOR USE IN DIAGNOSTIC PROCEDURES"

Our Abpromise to you: Quality guaranteed and expert technical support

- Replacement or refund for products not performing as stated on the datasheet
- Valid for 12 months from date of delivery
- Response to your inquiry within 24 hours
- We provide support in Chinese, English, French, German, Japanese and Spanish
- Extensive multi-media technical resources to help you
- We investigate all quality concerns to ensure our products perform to the highest standards

If the product does not perform as described on this datasheet, we will offer a refund or replacement. For full details of the Abpromise, please visit <https://www.abcam.com/abpromise> or contact our technical team.

Terms and conditions

- Guarantee only valid for products bought direct from Abcam or one of our authorized distributors