

Product datasheet

Anti-PTP4A2/PRL2 antibody [EPR3800] ab109118

Recombinant RabMAb

1 Image

Overview

Product name	Anti-PTP4A2/PRL2 antibody [EPR3800]
Description	Rabbit monoclonal [EPR3800] to PTP4A2/PRL2
Host species	Rabbit
Tested applications	Suitable for: WB, IP Unsuitable for: Flow Cyt, ICC or IHC-P
Species reactivity	Reacts with: Mouse, Rat, Human
Immunogen	Synthetic peptide within Human PTP4A2/PRL2 aa 1-100. The exact sequence is proprietary.
Positive control	SW480, SKBR-3, A549 and HeLa cell lysates
General notes	

This product was previously labelled as PTP4A2

This product is a recombinant monoclonal antibody, which offers several advantages including:

- High batch-to-batch consistency and reproducibility
- Improved sensitivity and specificity
- Long-term security of supply
- Animal-free production

For more information [see here](#).

Our RabMAb[®] technology is a patented hybridoma-based technology for making rabbit monoclonal antibodies. For details on our patents, please refer to [RabMAb[®] patents](#).

We are constantly working hard to ensure we provide our customers with best in class antibodies. As a result of this work we are pleased to now offer this antibody in purified format. We are in the process of updating our datasheets. The purified format is designated 'PUR' on our product labels. If you have any questions regarding this update, please contact our Scientific Support team.

Properties

Form Liquid

Storage instructions	Shipped at 4°C. Store at -20°C. Stable for 12 months at -20°C.
Storage buffer	pH: 7.20 Preservative: 0.05% Sodium azide Constituents: 0.1% BSA, 40% Glycerol, 9.85% Tris glycine, 50% PBS
Purity	Protein A purified
Clonality	Monoclonal
Clone number	EPR3800
Isotype	IgG

Applications

Our [Abpromise guarantee](#) covers the use of **ab109118** in the following tested applications.

The application notes include recommended starting dilutions; optimal dilutions/concentrations should be determined by the end user.

Application	Abreviews	Notes
WB		1/1000 - 1/10000. Detects a band of approximately 23 kDa (predicted molecular weight: 19 kDa).
IP		1/10 - 1/100.

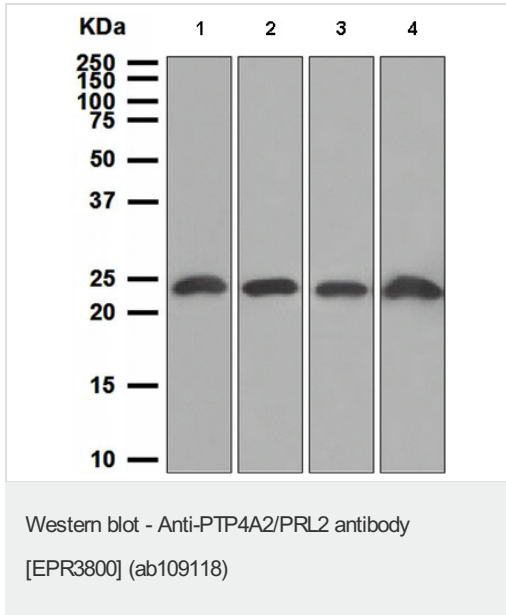
Application notes Is unsuitable for Flow Cyt, ICC or IHC-P.

Target

Relevance Protein tyrosine phosphatase which stimulates progression from G1 into S phase during mitosis. Promotes tumors. Inhibits geranylgeranyl transferase type II activity by blocking the association between RABGGTA and RABGGTB. Ubiquitously expressed, with highest levels in skeletal muscle, heart and thymus. Overexpressed in prostate tumor tissue.

Cellular localization Cell Membrane, Early Endosome and Cytoplasm.

Images



All lanes : Anti-PTP4A2/PRL2 antibody [EPR3800] (ab109118) at 1/1000 dilution

Lane 1 : SW480 cell lysate

Lane 2 : SKBR-3 cell lysate

Lane 3 : A549 cell lysate

Lane 4 : HeLa cell lysate

Lysates/proteins at 10 µg per lane.

Predicted band size: 19 kDa

Please note: All products are "FOR RESEARCH USE ONLY. NOT FOR USE IN DIAGNOSTIC PROCEDURES"

Our Abpromise to you: Quality guaranteed and expert technical support

- Replacement or refund for products not performing as stated on the datasheet
- Valid for 12 months from date of delivery
- Response to your inquiry within 24 hours
- We provide support in Chinese, English, French, German, Japanese and Spanish
- Extensive multi-media technical resources to help you
- We investigate all quality concerns to ensure our products perform to the highest standards

If the product does not perform as described on this datasheet, we will offer a refund or replacement. For full details of the Abpromise, please visit <https://www.abcam.com/abpromise> or contact our technical team.

Terms and conditions

- Guarantee only valid for products bought direct from Abcam or one of our authorized distributors