



Product datasheet

Anti-PTPN14 antibody ab204321

3 Images

Overview

Product name	Anti-PTPN14 antibody
Description	Rabbit polyclonal to PTPN14
Host species	Rabbit
Tested applications	Suitable for: IHC-P, WB, ICC/IF
Species reactivity	Reacts with: Human
Immunogen	Recombinant fragment corresponding to Human PTPN14 aa 725-795. Sequence: PMLREKMEYSAQLQAALARIPNKPPPEYPGPRKSVSN GALRQDQASLPPA MARARVLRHGPAKAISMSRTD Database link: Q15678
	 Run BLAST with  Run BLAST with
Positive control	Human colon tissue. HeLa cells. U-251 MG cell lysate.
General notes	This product was previously labelled as PTPD2

Properties

Form	Liquid
Storage instructions	Shipped at 4°C. Store at +4°C short term (1-2 weeks). Upon delivery aliquot. Store at -20°C long term. Avoid freeze / thaw cycle.
Storage buffer	pH: 7.2 Preservative: 0.02% Sodium azide Constituents: 40% Glycerol, 59% PBS
Purity	Immunogen affinity purified
Clonality	Polyclonal
Isotype	IgG

Applications

Our [Abpromise guarantee](#) covers the use of **ab204321** in the following tested applications.

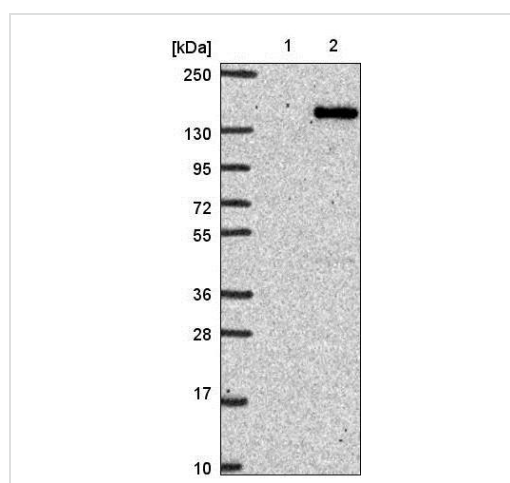
The application notes include recommended starting dilutions; optimal dilutions/concentrations should be determined by the end user.

Application	Abreviews	Notes
IHC-P		1/50 - 1/200. Perform heat mediated antigen retrieval with citrate buffer pH 6 before commencing with IHC staining protocol.
WB		1/100 - 1/250. Predicted molecular weight: 135 kDa.
ICC/IF		Use a concentration of 1 - 4 µg/ml.

Target

Function	Protein tyrosine phosphatase which may play a role in the regulation of lymphangiogenesis.
Tissue specificity	Expressed in a variety of human tissues including kidney, skeletal muscle, lung and placenta.
Involvement in disease	Defects in PTPN14 are a cause of choanal atresia and lymphedema (CHATLY) [MIM:613611]. A disease characterized by posterior choanal atresia and lymphedema. Additional features are a high-arched palate, hypoplastic nipples, and mild pectus excavatum. Note=A homozygous deletion in PTPN14 predicted to result in frameshift and premature truncation, has been shown to be the cause of choanal atresia and lymphedema in one family.
Sequence similarities	Belongs to the protein-tyrosine phosphatase family. Non-receptor class subfamily. Contains 1 FERM domain. Contains 1 tyrosine-protein phosphatase domain.
Post-translational modifications	Phosphorylated upon DNA damage, probably by ATM or ATR.
Cellular localization	Cytoplasm > cytoskeleton.

Images



Western blot - Anti-PTPN14 antibody (ab204321)

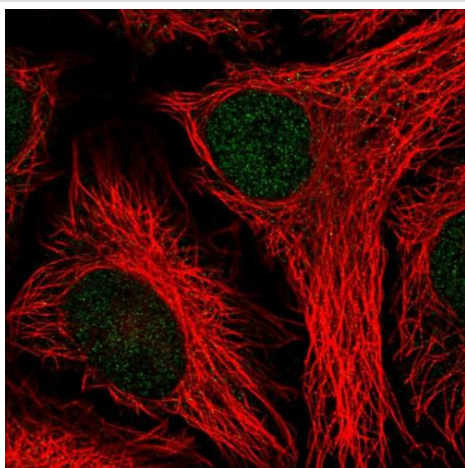
All lanes : Anti-PTPN14 antibody (ab204321) at 1/100 dilution

Lane 1 : RT-4 cell lysate

Lane 2 : U-251 MG cell lysate

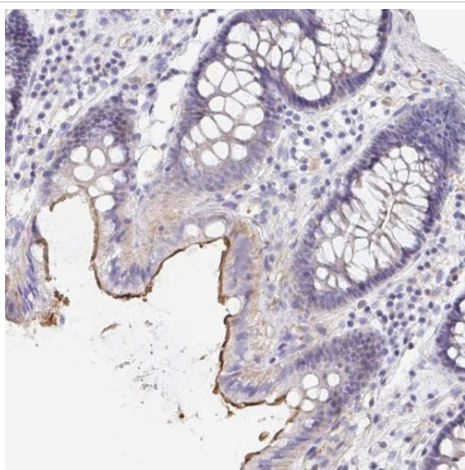
Developed using the ECL technique.

Predicted band size: 135 kDa



Immunofluorescent analysis of HeLa cells (PFA-fixed/Triton X-100 permeabilized) labeling PTPN14 with ab204321 at 4 µg/ml.

Immunocytochemistry/ Immunofluorescence - Anti-PTPN14 antibody (ab204321)



Immunohistochemical analysis of paraffin-embedded Human colon tissue, labeling PTPN14 with ab204321 at 1/50 dilution.

Immunohistochemistry (Formalin/PFA-fixed paraffin-embedded sections) - Anti-PTPN14 antibody (ab204321)

Please note: All products are "FOR RESEARCH USE ONLY. NOT FOR USE IN DIAGNOSTIC PROCEDURES"

Our Abpromise to you: Quality guaranteed and expert technical support

- Replacement or refund for products not performing as stated on the datasheet
- Valid for 12 months from date of delivery
- Response to your inquiry within 24 hours
- We provide support in Chinese, English, French, German, Japanese and Spanish
- Extensive multi-media technical resources to help you
- We investigate all quality concerns to ensure our products perform to the highest standards

If the product does not perform as described on this datasheet, we will offer a refund or replacement. For full details of the Abpromise,

please visit <https://www.abcam.com/abpromise> or contact our technical team.

Terms and conditions

- Guarantee only valid for products bought direct from Abcam or one of our authorized distributors