



Product datasheet

Anti-PTPRN2 antibody ab244293

3 Images

Overview

Product name	Anti-PTPRN2 antibody
Description	Rabbit polyclonal to PTPRN2
Host species	Rabbit
Tested applications	Suitable for: WB, ICC/IF, IHC-P
Species reactivity	Reacts with: Human
Immunogen	<p>Recombinant fragment corresponding to Human PTPRN2 aa 382-492. Sequence:</p> <p>QDDDDRLYQEVHRLSATLGGLLQDHGSRLLPGALPFARP LDMERKKSEHP ESSLSSEEEETAGVENVKSQTYSKDLLGQQPHSEPGAAAF GELQNQMPGPS KEEQSLPAGAQ</p> <p>Database link: Q92932</p> <p style="text-align: right;">  Run BLAST with  Run BLAST with </p>
Positive control	IHC-P: Human liver tissue. WB: U-87 MG cell lysate. ICC/IF: AF22 cells.
General notes	<p>Reproducibility is key to advancing scientific discovery and accelerating scientists' next breakthrough.</p> <p>Abcam is leading the way with our range of recombinant antibodies, knockout-validated antibodies and knockout cell lines, all of which support improved reproducibility.</p> <p>We are also planning to innovate the way in which we present recommended applications and species on our product datasheets, so that only applications & species that have been tested in our own labs, our suppliers or by selected trusted collaborators are covered by our Abpromise™ guarantee.</p> <p>In preparation for this, we have started to update the applications & species that this product is Abpromise guaranteed for.</p> <p>We are also updating the applications & species that this product has been “predicted to work with,” however this information is not covered by our Abpromise guarantee.</p> <p>Applications & species from publications and Abreviews that have not been tested in our own labs or in those of our suppliers are not covered by the Abpromise guarantee.</p> <p>Please check that this product meets your needs before purchasing. If you have any questions, special requirements or concerns, please send us an inquiry and/or contact our Support team ahead of purchase. Recommended alternatives for this product can be found below, as well as</p>

Properties

Form	Liquid
Storage instructions	Shipped at 4°C. Store at +4°C short term (1-2 weeks). Upon delivery aliquot. Store at -20°C long term. Avoid freeze / thaw cycle.
Storage buffer	pH: 7.20 Preservative: 0.02% Sodium azide Constituents: PBS, 40% Glycerol (glycerin, glycerine)
Purity	Immunogen affinity purified
Clonality	Polyclonal
Isotype	IgG

Applications

Our [Abpromise guarantee](#) covers the use of **ab244293** in the following tested applications.

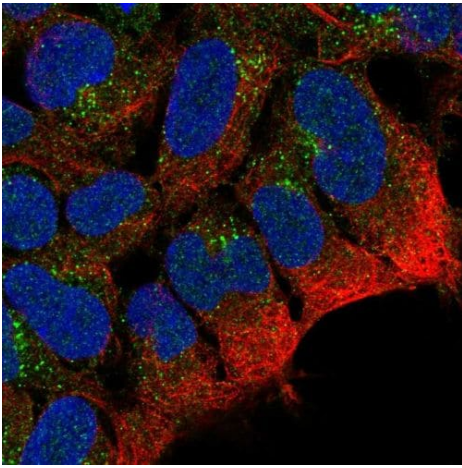
The application notes include recommended starting dilutions; optimal dilutions/concentrations should be determined by the end user.

Application	Abreviews	Notes
WB		Use a concentration of 0.04 - 0.4 µg/ml. Predicted molecular weight: 111 kDa.
ICC/IF		Use a concentration of 0.25 - 2 µg/ml. Fixation/Permeabilization: PFA/Triton X-100.
IHC-P		1/50 - 1/200. Perform heat mediated antigen retrieval with citrate buffer pH 6 before commencing with IHC staining protocol.

Target

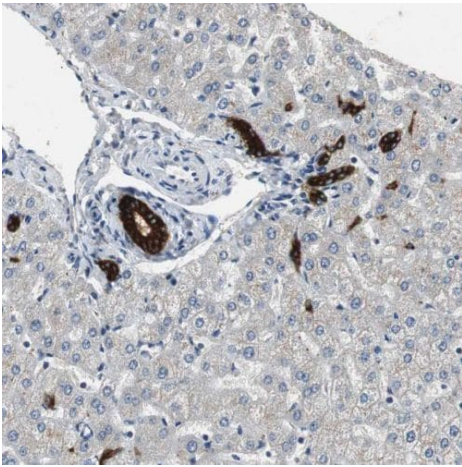
Function	Implicated in development of nervous system and pancreatic endocrine cells.
Tissue specificity	Highest levels in brain and pancreas. Lower levels in trachea, prostate, stomach and spinal chord.
Sequence similarities	Belongs to the protein-tyrosine phosphatase family. Receptor class 8 subfamily. Contains 1 tyrosine-protein phosphatase domain.
Domain	The cytoplasmic domain appears to contain the autoantigenic epitopes.
Post-translational modifications	Appears to undergo multiple proteolytic cleavage at consecutive basic residues.
Cellular localization	Membrane.

Images



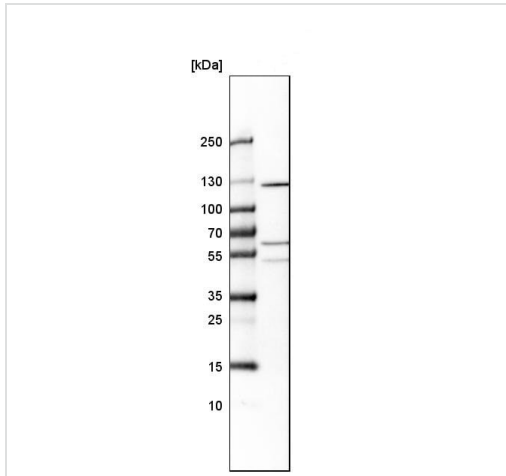
PFA fixed, Triton X-100 permeabilized AF22 cells labeling PTPRN2 using ab244293 at 4 µg/ml (green) in ICC/IF.

Immunocytochemistry/ Immunofluorescence - Anti-PTPRN2 antibody (ab244293)



Formalin-fixed, paraffin-embedded human liver tissue stained for PTPRN2 with ab244293 at a 1/50 dilution in immunohistochemical analysis.

Immunohistochemistry (Formalin/PFA-fixed paraffin-embedded sections) - Anti-PTPRN2 antibody (ab244293)



Western blot - Anti-PTPRN2 antibody (ab244293)

Anti-PTPRN2 antibody (ab244293) at 0.4 µg/ml + U-87 MG (Human glioblastoma-astrocytoma epithelial cell line) cell lysate

Predicted band size: 111 kDa

Please note: All products are "FOR RESEARCH USE ONLY. NOT FOR USE IN DIAGNOSTIC PROCEDURES"

Our Abpromise to you: Quality guaranteed and expert technical support

- Replacement or refund for products not performing as stated on the datasheet
- Valid for 12 months from date of delivery
- Response to your inquiry within 24 hours
- We provide support in Chinese, English, French, German, Japanese and Spanish
- Extensive multi-media technical resources to help you
- We investigate all quality concerns to ensure our products perform to the highest standards

If the product does not perform as described on this datasheet, we will offer a refund or replacement. For full details of the Abpromise, please visit <https://www.abcam.com/abpromise> or contact our technical team.

Terms and conditions

- Guarantee only valid for products bought direct from Abcam or one of our authorized distributors