

Product datasheet

Anti-PU.1/Spi1 antibody [EPR3158Y] ab76543

Recombinant RabMAb

★★★★★ 2 Abreviews 5 References 7 Images

Overview

Product name	Anti-PU.1/Spi1 antibody [EPR3158Y]
Description	Rabbit monoclonal [EPR3158Y] to PU.1/Spi1
Host species	Rabbit
Tested applications	Suitable for: IHC-Fr, IHC-P, WB, Flow Cyt Unsuitable for: ICC/IF or IP
Species reactivity	Reacts with: Human
Immunogen	Synthetic peptide within Human PU.1/Spi1 aa 1-100 (N terminal). The exact sequence is proprietary. Database link: P17947
Positive control	Daudi and U937 cell lysates. Human tonsil tissue.
General notes	<p>Mouse, Rat: We have preliminary internal testing data to indicate this antibody may not react with these species. Please contact us for more information.</p> <p>This product is a recombinant monoclonal antibody, which offers several advantages including:</p> <ul style="list-style-type: none"> - High batch-to-batch consistency and reproducibility - Improved sensitivity and specificity - Long-term security of supply - Animal-free production <p>For more information see here.</p> <p>Our RabMAb[®] technology is a patented hybridoma-based technology for making rabbit monoclonal antibodies. For details on our patents, please refer to RabMAb[®] patents.</p> <p>Reproducibility is key to advancing scientific discovery and accelerating scientists' next breakthrough.</p> <p>Abcam is leading the way with our range of recombinant antibodies, knockout-validated antibodies and knockout cell lines, all of which support improved reproducibility.</p> <p>We are also planning to innovate the way in which we present recommended applications and species on our product datasheets, so that only applications & species that have been tested in our own labs, our suppliers or by selected trusted collaborators are covered by our Abpromise[™] guarantee.</p> <p>In preparation for this, we have started to update the applications & species that this product is Abpromise guaranteed for.</p>

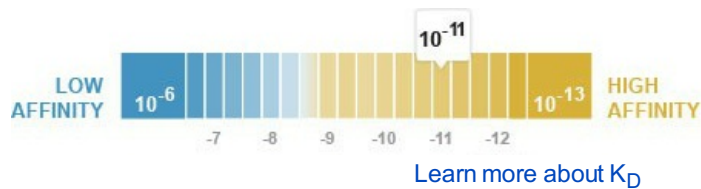
We are also updating the applications & species that this product has been “predicted to work with,” however this information is not covered by our Abpromise guarantee.

Applications & species from publications and Abreviews that have not been tested in our own labs or in those of our suppliers are not covered by the Abpromise guarantee.

Please check that this product meets your needs before purchasing. If you have any questions, special requirements or concerns, please send us an inquiry and/or contact our Support team ahead of purchase. Recommended alternatives for this product can be found below, as well as customer reviews and Q&As.

Properties

Form	Liquid
Storage instructions	Shipped at 4°C. Store at -20°C. Stable for 12 months at -20°C.
Dissociation constant (K_D)	K _D = 4.40 x 10 ⁻¹¹ M



Storage buffer	pH: 7.20 Preservative: 0.05% Sodium azide Constituents: 0.1% BSA, 40% Glycerol (glycerin, glycerine), 9.85% Tris glycine, 50% Tissue culture supernatant
Purity	Tissue culture supernatant
Clonality	Monoclonal
Clone number	EPR3158Y
Isotype	IgG

Applications

Our [Abpromise guarantee](#) covers the use of **ab76543** in the following tested applications.

The application notes include recommended starting dilutions; optimal dilutions/concentrations should be determined by the end user.

Application	Abreviews	Notes
IHC-Fr	★★★★★	Use at an assay dependent concentration.
IHC-P		1/100 - 1/250. Perform heat mediated antigen retrieval before commencing with IHC staining protocol.
WB	★★★★★	1/5000 - 1/20000. Detects a band of approximately 42 kDa (predicted molecular weight: 31 kDa).
Flow Cyt		1/70. ab172730 - Rabbit monoclonal IgG, is suitable for use as an isotype control with this antibody.

Application notes	Is unsuitable for ICC/IF or IP.
--------------------------	---------------------------------

Target

Function

Binds to the PU-box, a purine-rich DNA sequence (5'-GAGGAA-3') that can act as a lymphoid-specific enhancer. This protein is a transcriptional activator that may be specifically involved in the differentiation or activation of macrophages or B-cells. Also binds RNA and may modulate pre-mRNA splicing.

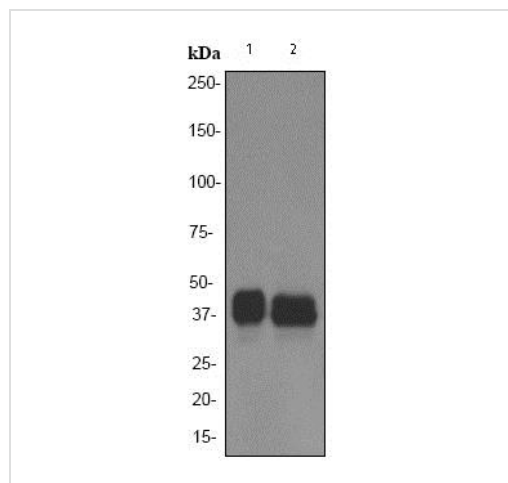
Sequence similarities

Belongs to the ETS family.
Contains 1 ETS DNA-binding domain.

Cellular localization

Nucleus.

Images



Western blot - Anti-PU.1/Spi1 antibody [EPR3158Y] (ab76543)

All lanes : Anti-PU.1/Spi1 antibody [EPR3158Y] (ab76543) at 1/10000 dilution

Lane 1 : Daudi cell lysates

Lane 2 : U937 cell lysates

Lysates/proteins at 10 µg per lane.

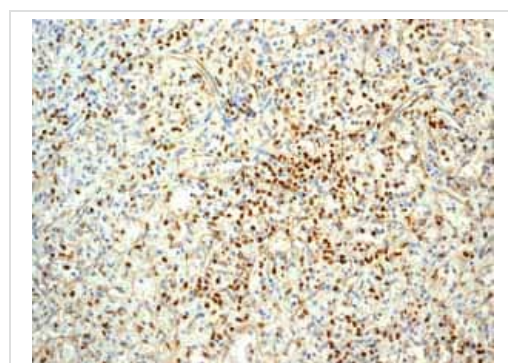
Secondary

All lanes : HRP labelled goat anti-rabbit at 1/2000 dilution

Predicted band size: 31 kDa

Observed band size: 42 kDa

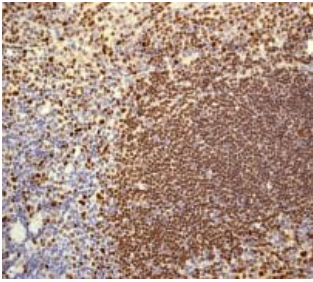
[why is the actual band size different from the predicted?](#)



Immunohistochemistry (Formalin/PFA-fixed paraffin-embedded sections) - Anti-PU.1/Spi1 antibody [EPR3158Y] (ab76543)

ab76543 showing positive staining in Normal spleen tissue.

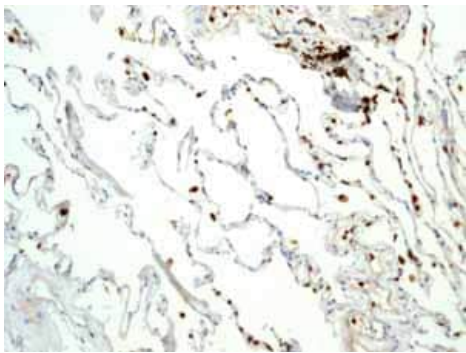
Perform heat mediated antigen retrieval before commencing with IHC staining protocol.



Immunohistochemistry (Formalin/PFA-fixed paraffin-embedded sections) - Anti-PU.1/Spi1 antibody [EPR3158Y] (ab76543)

ab76543, at 1/100 dilution, staining PU.1/Spi1 in paraffin-embedded human tonsil tissue by immunohistochemistry.

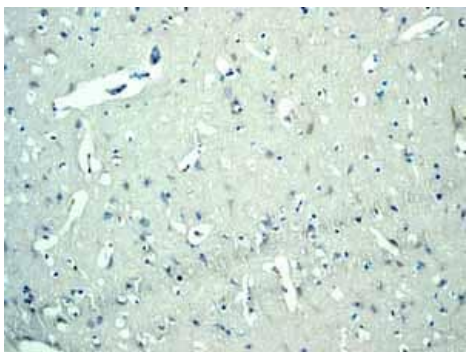
Perform heat mediated antigen retrieval before commencing with IHC staining protocol.



Immunohistochemistry (Formalin/PFA-fixed paraffin-embedded sections) - Anti-PU.1/Spi1 antibody [EPR3158Y] (ab76543)

ab76543 showing positive staining in Normal lung lymphocytes staining tissue.

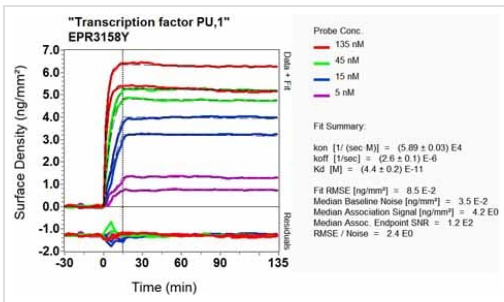
Perform heat mediated antigen retrieval before commencing with IHC staining protocol.



Immunohistochemistry (Formalin/PFA-fixed paraffin-embedded sections) - Anti-PU.1/Spi1 antibody [EPR3158Y] (ab76543)

ab76543 showing negative staining in Normal brain tissue.

Perform heat mediated antigen retrieval before commencing with IHC staining protocol.



Other - Anti-PU.1/Spi1 antibody [EPR3158Y]
(ab76543)

Equilibrium dissociation constant (K_D)

Learn more about K_D

[Click here to learn more about \$K_D\$](#)

Why choose a recombinant antibody?

Research with confidence
Consistent and reproducible results

Long-term and scalable supply
Recombinant technology

Success from the first experiment
Confirmed specificity

Ethical standards compliant
Animal-free production

Anti-PU.1/Spi1 antibody [EPR3158Y] (ab76543)

Please note: All products are "FOR RESEARCH USE ONLY. NOT FOR USE IN DIAGNOSTIC PROCEDURES"

Our Abpromise to you: Quality guaranteed and expert technical support

- Replacement or refund for products not performing as stated on the datasheet
- Valid for 12 months from date of delivery
- Response to your inquiry within 24 hours
- We provide support in Chinese, English, French, German, Japanese and Spanish
- Extensive multi-media technical resources to help you
- We investigate all quality concerns to ensure our products perform to the highest standards

If the product does not perform as described on this datasheet, we will offer a refund or replacement. For full details of the Abpromise, please visit <https://www.abcam.com/abpromise> or contact our technical team.

Terms and conditions

- Guarantee only valid for products bought direct from Abcam or one of our authorized distributors