

Product datasheet

Anti-PU.1/Spi1 antibody [PU1/2146] - BSA and Azide free ab237905

[6 Images](#)

Overview

Product name	Anti-PU.1/Spi1 antibody [PU1/2146] - BSA and Azide free
Description	Mouse monoclonal [PU1/2146] to PU.1/Spi1 - BSA and Azide free
Host species	Mouse
Tested applications	Suitable for: Protein Array, WB, IHC-P
Species reactivity	Reacts with: Human
Immunogen	Recombinant fragment within Human PU.1/Spi1 aa 16-170. The exact sequence is proprietary. Database link: P17947
Positive control	IHC-P: Human Hodgkin's lymphoma, colon carcinoma, lymph node and spleen tissues. WB: THP-1 cell lysate.

Properties

Form	Liquid
Storage instructions	Shipped at 4°C. Store at +4°C short term (1-2 weeks). Upon delivery aliquot. Store at -20°C long term. Avoid freeze / thaw cycle.
Storage buffer	Constituent: PBS
Purity	Protein A/G purified
Purification notes	Ab purified from Bioreactor Concentrate by Protein A/G.
Clonality	Monoclonal
Clone number	PU1/2146
Isotype	IgG2b
Light chain type	kappa

Applications

Our [Abpromise guarantee](#) covers the use of **ab237905** in the following tested applications.

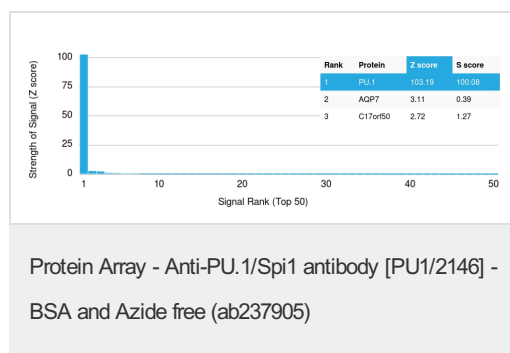
The application notes include recommended starting dilutions; optimal dilutions/concentrations should be determined by the end user.

Application	Abreviews	Notes
Protein Array		Use at an assay dependent concentration.
WB		Use a concentration of 0.5 - 1 µg/ml. Predicted molecular weight: 31 kDa.
IHC-P		Use a concentration of 1 - 2 µg/ml. Perform heat mediated antigen retrieval with citrate buffer pH 6 before commencing with IHC staining protocol. Incubate with primary ab for 30 minutes at RT

Target

Function	Binds to the PU-box, a purine-rich DNA sequence (5'-GAGGAA-3') that can act as a lymphoid-specific enhancer. This protein is a transcriptional activator that may be specifically involved in the differentiation or activation of macrophages or B-cells. Also binds RNA and may modulate pre-mRNA splicing.
Sequence similarities	Belongs to the ETS family. Contains 1 ETS DNA-binding domain.
Cellular localization	Nucleus.

Images

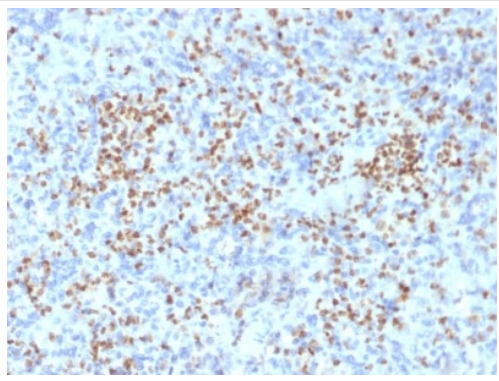


This data was produced with [ab238054](#), the same antibody in a different formulation with BSA and Azide.

[ab238054](#) was tested in protein array against over 19000 different full-length human proteins.

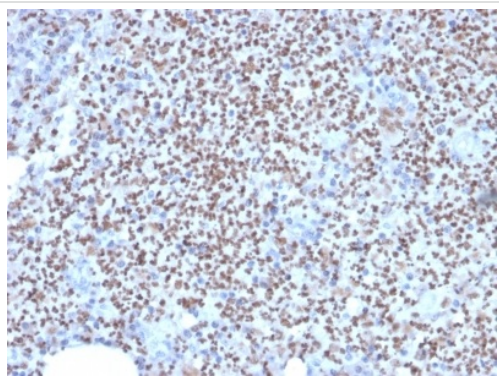
Z- and S- Score: The Z-score represents the strength of a signal that a monoclonal antibody (MAb) (in combination with a fluorescently-tagged anti-IgG secondary antibody) produces when binding to a particular protein on the HuProt™ array. Z-scores are described in units of standard deviations (SD's) above the mean value of all signals generated on that array. If targets on HuProt™ are arranged in descending order of the Z-score, the S-score is the difference (also in units of SD's) between the Z-score. S-score therefore represents the relative target specificity of a MAb to its intended target.

A MAb is specific to its intended target if the MAb has an S-score of at least 2.5. For example, if a MAb binds to protein X with a Z-score of 43 and to protein Y with a Z-score of 14, then the S-score for the binding of that MAb to protein X is equal to 29.



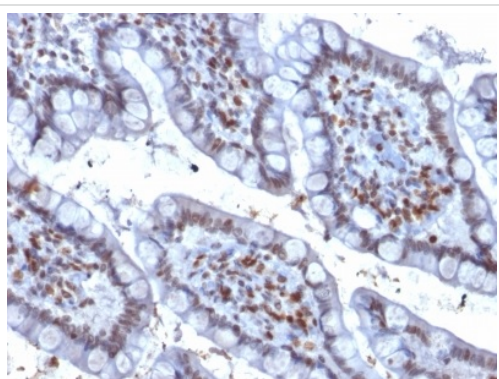
Immunohistochemistry (Formalin/PFA-fixed paraffin-embedded sections) - Anti-PU.1/Spi1 antibody [PU1/2146] - BSA and Azide free (ab237905)

Formalin-fixed, paraffin-embedded human spleen tissue stained for PU.1/Spi1 using ab237905 at 2 $\mu\text{g}/\text{mL}$ in immunohistochemical analysis.



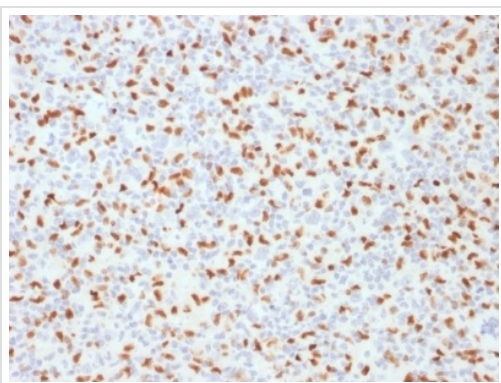
Immunohistochemistry (Formalin/PFA-fixed paraffin-embedded sections) - Anti-PU.1/Spi1 antibody [PU1/2146] - BSA and Azide free (ab237905)

Formalin-fixed, paraffin-embedded human lymph node tissue stained for PU.1/Spi1 using ab237905 at 2 $\mu\text{g}/\text{mL}$ in immunohistochemical analysis.



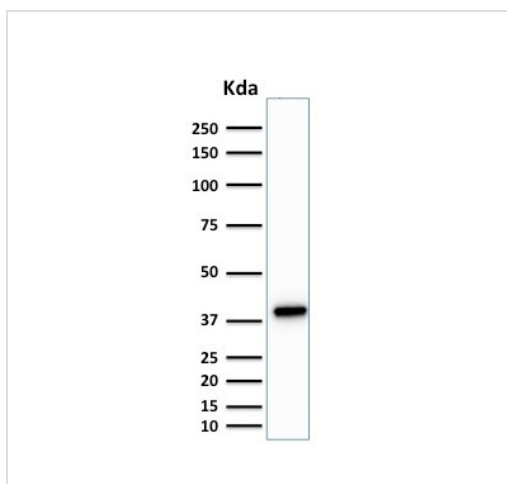
Immunohistochemistry (Formalin/PFA-fixed paraffin-embedded sections) - Anti-PU.1/Spi1 antibody [PU1/2146] - BSA and Azide free (ab237905)

Formalin-fixed, paraffin-embedded human colon carcinoma tissue stained for PU.1/Spi1 using ab237905 at 2 $\mu\text{g}/\text{mL}$ in immunohistochemical analysis.



Immunohistochemistry (Formalin/PFA-fixed paraffin-embedded sections) - Anti-PU.1/Spi1 antibody [PU1/2146] - BSA and Azide free (ab237905)

Formalin-fixed, paraffin-embedded human Hodgkin's lymphoma tissue stained for PU.1/Spi1 using ab237905 at 2 µg/mL in immunohistochemical analysis.



Western blot - Anti-PU.1/Spi1 antibody [PU1/2146] - BSA and Azide free (ab237905)

Anti-PU.1/Spi1 antibody [PU1/2146] - BSA and Azide free (ab237905) at 1 µg/ml + THP-1 (human monocytic leukemia cell line) whole cell lysate

Predicted band size: 31 kDa

Please note: All products are "FOR RESEARCH USE ONLY. NOT FOR USE IN DIAGNOSTIC PROCEDURES"

Our Abpromise to you: Quality guaranteed and expert technical support

- Replacement or refund for products not performing as stated on the datasheet
- Valid for 12 months from date of delivery
- Response to your inquiry within 24 hours
- We provide support in Chinese, English, French, German, Japanese and Spanish
- Extensive multi-media technical resources to help you
- We investigate all quality concerns to ensure our products perform to the highest standards

If the product does not perform as described on this datasheet, we will offer a refund or replacement. For full details of the Abpromise, please visit <https://www.abcam.com/abpromise> or contact our technical team.

Terms and conditions

- Guarantee only valid for products bought direct from Abcam or one of our authorized distributors